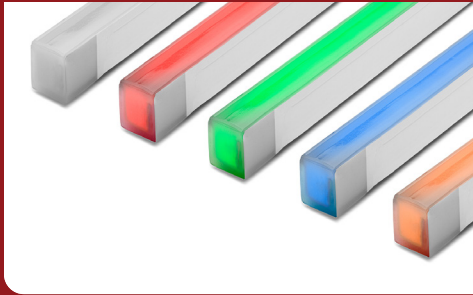


FIXTURE TYPE \_\_\_\_\_

PROJECT NAME \_\_\_\_\_

LOCATION \_\_\_\_\_



# Signwave® 3

NARROW VIEW FLEXIBLE LIGHTING SYSTEM



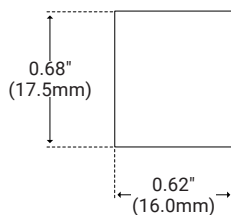
## Description

Signwave 3 is the only series offered with Horizontal or Vertical bending options. The perfectly flat top of Signwave 3 provides greatly reduced side-viewing angles and concentrates the incredibly bright illumination onto a single direct-view surface.

## Features

- Dimmable
- 50,000 Hour Life
- Flat Profile for Streamline Projects
- Horizontal or Vertical Bending Option
- IP67 or IP68 Option
- UL-Listed for Indoor and Outdoor Use
- Factory-Installed Power Feed
- Injection-Molded Flush End Caps
- For Use with 24V Power Supplies

## Dimensions

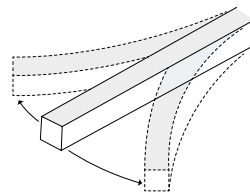


## Specifications

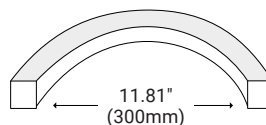
Series	SW3
Temp/Color	White Light, Red, Green, Blue, Amber, RGBW, CT (2200K–5700K)
Input Voltage	24V DC
Lumens per Foot	34–183
Watts per Foot	2.2–4.6†
Beam Spread	160°
CRI	80+
Max Run Length	Unlimited
Dimensions	0.62" (16.0mm) × 0.68" (17.0mm)
Dimming Options	PWM, Triac, 0–10V, DMX, Hi-lume
Operating Temp	-4°F (-20°C) to 113°F (45°C)

## Bending Options

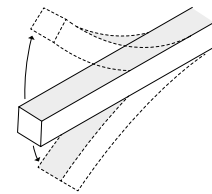
HORIZONTAL



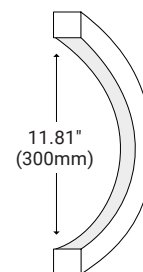
HORIZONTAL BEND DIAMETER



VERTICAL



VERTICAL BEND DIAMETER



\* See Series Data for more information



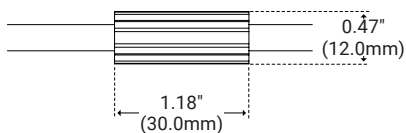
## Product Code Builder

Series	Length	Temp/Color	Bending
<b>SW3</b>	xx.xx		
SW3 – Signwave 3	xx.xx – Length (in)	27K – 2700K 30K – 3000K 35K – 3500K 40K – 4000K 45K – 4500K 50K – 5000K RD – Red GRN – Green BL – Blue AM – Amber RGBW – Color Changing CT – Color Tuning	VR – Vertical HZ – Horizontal†
Feed Point	Feed Length	Rating	
B – Bottom Feed SL – Side-Feed Left SR – Side-Feed Right E – End Feed	S – Standard (118") xx.xx – Length (in)	IP67 – IP67 Rated IP68 – IP68 Rated	
† Not available in RGBW		Example: SW3-36-27K-VR-B-S-IP67	

## Series Data

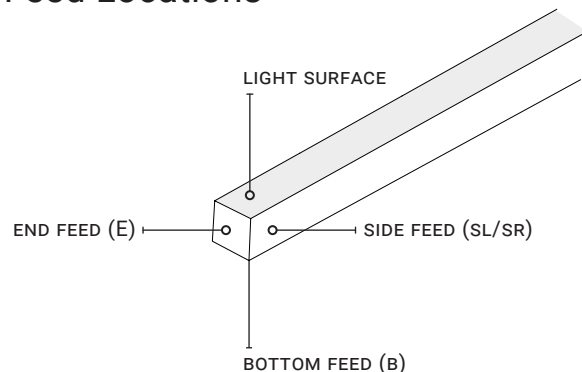
	White (Specify CCT)	Red	Green	Blue	Amber	RGBW	CT (22K–57K)
Wavelength (nm)	N/A	620–630	520–530	465–475	585–595	N/A	N/A
Wattage (W/ft)	3.7	2.4	3.7	3.7	2.4	4.6	3.7
Power Feed (ft)	Every 26ft	Every 39ft	Every 26ft	Every 26ft	Every 39ft	Every 21ft	Every 26ft
Production Intervals (in)	2.19"	3.28"	2.19"	2.19"	3.28"	3.28"	3.28"

## Ferrule



DryWire ferrule located 4.53" (±0.39") from the cable connector. Protects against damage from water ingress inside cable wire. Please note that any attempt to remove the anti-wicking ferrule will result in the voiding of the warranty.

## Feed Locations



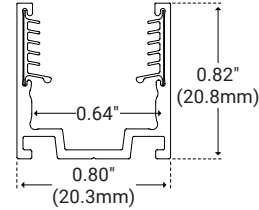


## I Accessories

### Aluminum Serrated Channel



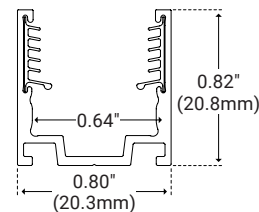
Unit Number	SW-K-AL-CH-SR-2M
Material	Aluminum
Length	78.75" (2m)
Width	0.80" (20.2mm)
Height	0.82" (20.8mm)
Internal Width	0.64" (16.3mm)



### Aluminum Serrated Clip



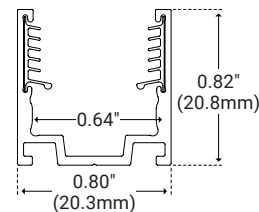
Unit Number	SW-K-CLP-AL-SR
Material	Aluminum
Length	0.79" (20.0mm)
Width	0.80" (20.2mm)
Height	0.82" (20.8mm)
Internal Width	0.64" (16.8mm)



### Aluminum Serrated Flex Channel



Unit Number	SW-K-CH-AL-FLX-1M
Material	Aluminum
Length	39.30" (1m)
Width	0.80" (20.2mm)
Height	0.82" (20.8mm)
Internal Width	0.64" (16.3mm)

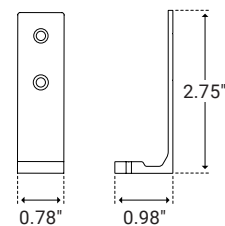


### Side Mounting Bracket



Unit Number	SW-CLP-RA
Material	Aluminum
Length	0.78" (20.0mm)
Width	0.98" (25.0mm)
Height	2.75" (70.0mm)

*Must be paired with channel*

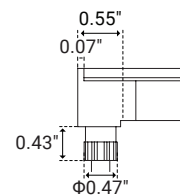
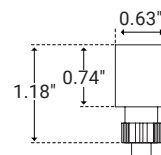


## I Feed Options

### Bottom Feed (IP67)



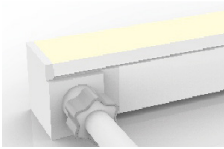
Unit Number	B
Unit Width	0.63" (16.0mm)
Unit Height	1.18" (29.9mm)



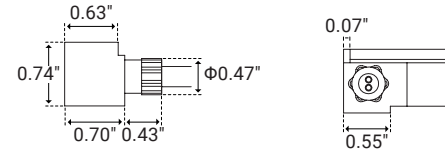


## I Feed Options

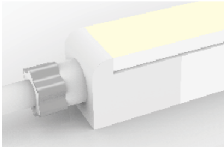
### Side Feed Right/Left (IP67)



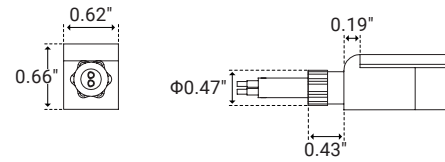
Unit Number	SR/SL
Unit Width	0.70" (2.75mm)
Unit Height	0.74" (2.91mm)



### End Feed (IP67)



Unit Number	E
Unit Width	0.62" (15.7mm)
Unit Height	0.66" (16.7mm)



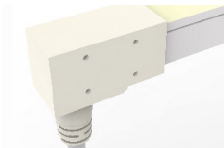
### End Cap (IP67)



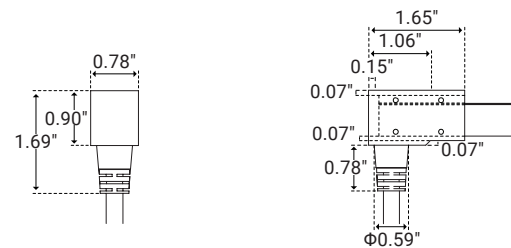
Unit Number	EC
Unit Width	0.62" (15.7mm)
Unit Height	0.66" (16.7mm)



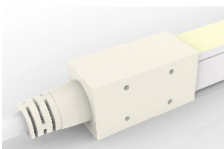
### Bottom Feed (IP68)



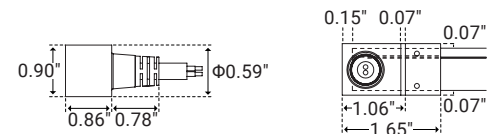
Unit Number	B
Unit Width	0.78" (19.8mm)
Unit Height	1.69" (42.9mm)



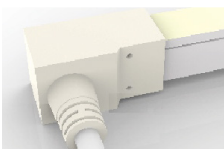
### Side Feed Right/Left (IP68)



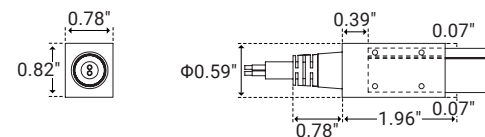
Unit Number	SR/SL
Unit Width	0.90" (22.8mm)
Unit Height	1.64" (41.6mm)



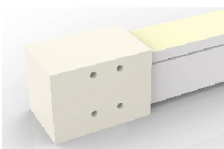
### End Feed (IP68)



Unit Number	E
Unit Width	0.78" (19.8mm)
Unit Height	0.82" (20.8mm)



### End Cap (IP68)



Unit Number	EC
Unit Width	0.78" (19.8mm)
Unit Height	0.82" (20.8mm)

