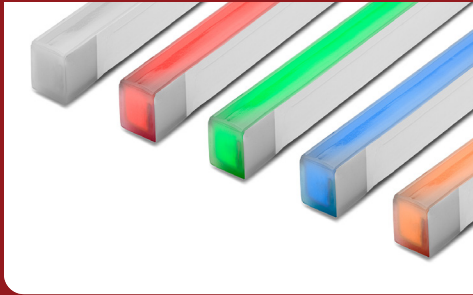


FIXTURE TYPE \_\_\_\_\_

PROJECT NAME \_\_\_\_\_

LOCATION \_\_\_\_\_



# Signwave® 3 PSF

NARROW VIEW POOL AND FOUNTAIN RATED



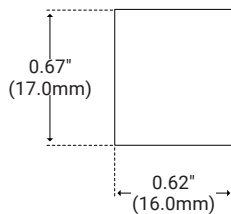
## I Description

Signwave 3 PSF is the only series offered with Horizontal or Vertical bending options. The perfectly flat top of Signwave 3 PSF provides greatly reduced side-viewing angles and concentrates the incredibly bright illumination onto a single direct-view surface.

## I Features

- Dimmable
- 50,000 Hour Life
- Flat Profile for Streamline Projects
- Horizontal or Vertical Bending Option
- IP68 Permanet Installation Underwater up to 6.56ft (2m)
- UL676 Listed for Pool, Spa, and Fountain Use
- Factory-Installed Power Feed
- For Use with 24V Power Supplies

## I Dimensions

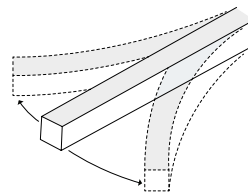


## I Specifications

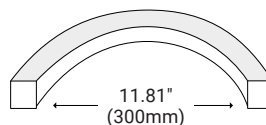
Series	SW3PSF
Temp/Color	White, Red, Green, Blue, Amber, TX, CT (2200K–5700K)
Input Voltage	24V DC
Lumens per Foot	137 (White Light)
Watts per Foot	2.44–6.71 <sup>†</sup>
Beam Spread	160°
CRI	80+
Max Run Length	Unlimited
Dimensions	0.62" (16.0mm) × 0.67" (17.0mm)
Dimming Options	PWM, Triac, 0–10V, DMX, Hi-lume
Operating Temp	-40°F (-40°C) to 140°F (60°C)

## I Bending Options

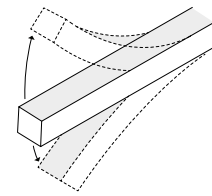
HORIZONTAL



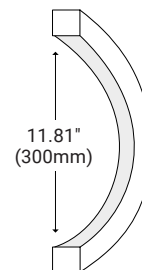
HORIZONTAL  
BEND DIAMETER



VERTICAL



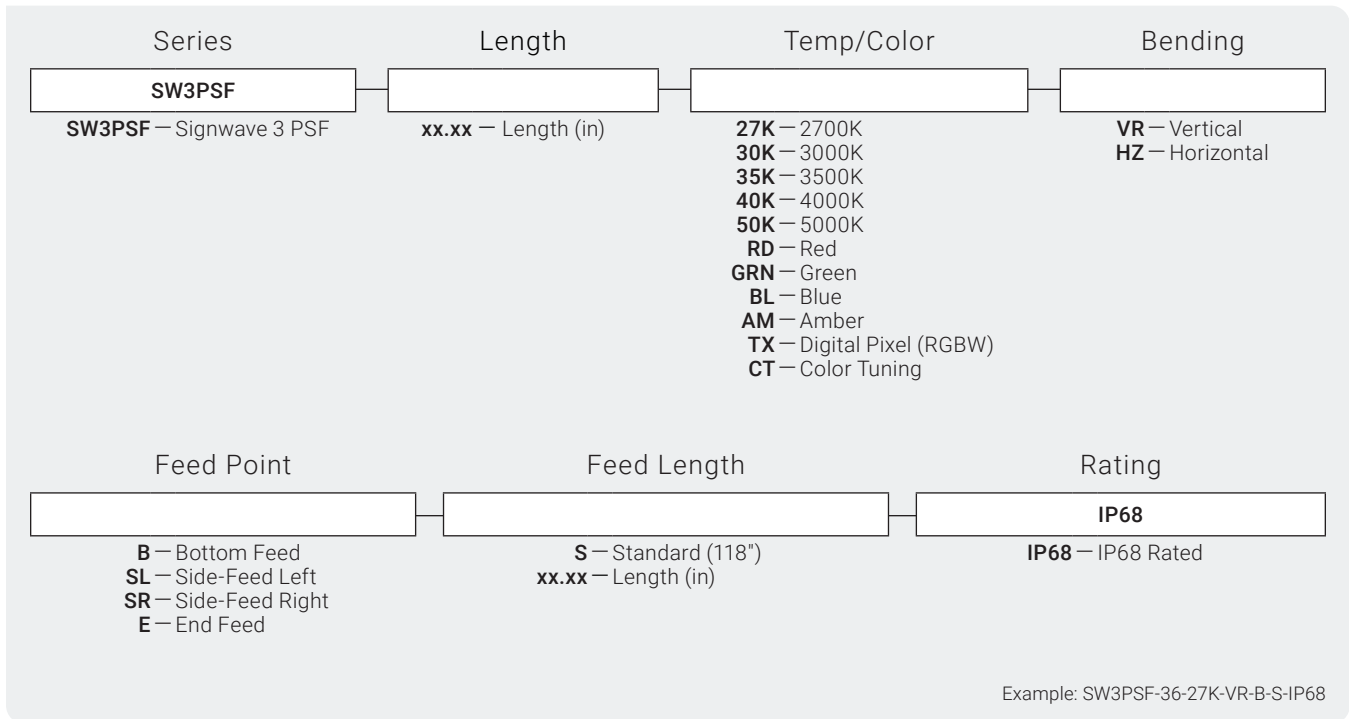
VERTICAL  
BEND DIAMETER



<sup>†</sup> See Series Data for more information



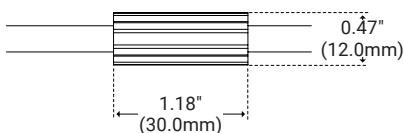
## Product Code Builder



## Series Data

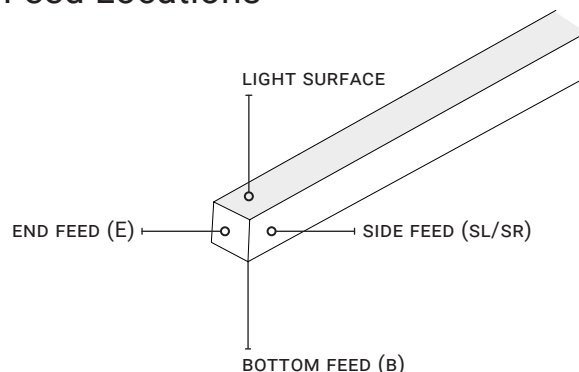
	White (Specify CCT)	Red	Green	Blue	Amber	TX	CT (22K–57K)
Wavelength (nm)	N/A	620–630	520–530	465–475	585–595	N/A	N/A
Wattage (W/ft)	3.65	2.44	3.65	3.65	2.44	6.71	3.65
Power Feed (ft)	Every 22ft	Every 33ft	Every 22ft	Every 22ft	Every 33ft	Every 16ft	Every 22ft
Production Intervals (in)	2.19"	3.28"	2.19"	2.19"	3.28"	3.28"	3.28"

## Ferrule



DryWire ferrule located 4.53" ( $\pm 0.39$ ) from the cable connector. Protects against damage from water ingress inside cable wire. Please note that any attempt to remove the anti-wicking ferrule will result in the voiding of the warranty.

## Feed Locations





## I Power Supply

### PF90-24V

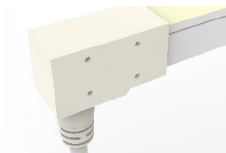


Model	PF90-24V
Input Voltage	120V AC, 60Hz
Output Voltage	24V DC/Constant Voltage
Max Wattage	92W
Length	12.19" (310.0mm)
Width	5.88" (150.0mm)
Height	3.94" (100.0mm)

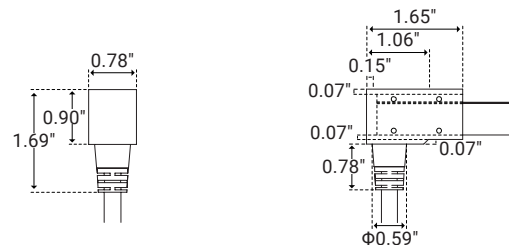
- Power Supply for Plug-in-Pool System
- 24V DC Safety Power Supply
- Maximum Power Consumption 92W
- ON/OFF Switch and Breaker on Front Panel
- For Use with Kelvix Signwave® 3 Pool, Spa & Fountain

## I Feed Options

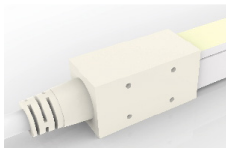
### Bottom Feed (IP68)



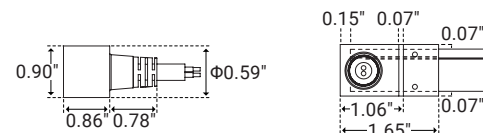
Unit Number	B
Unit Width	0.78" (19.8mm)
Unit Height	1.69" (42.9mm)



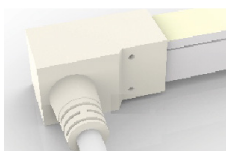
### Side Feed Right/Left (IP68)



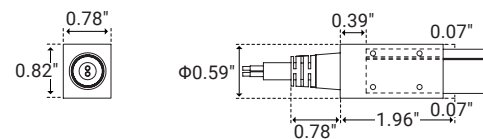
Unit Number	SR/SL
Unit Width	0.90" (22.8mm)
Unit Height	1.64" (41.6mm)



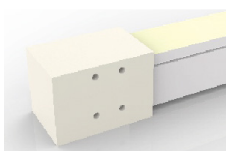
### End Feed (IP68)



Unit Number	E
Unit Width	0.78" (19.8mm)
Unit Height	0.82" (20.8mm)



### End Cap (IP68)



Unit Number	EC
Unit Width	0.78" (19.8mm)
Unit Height	0.82" (20.8mm)



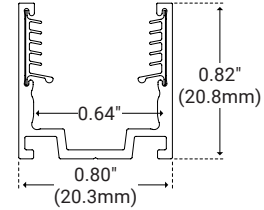


## I Accessories

### Aluminum Serrated Channel



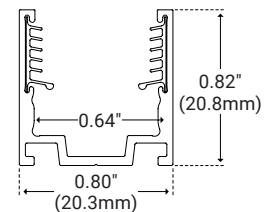
Unit Number	SW-K-AL-CH-SR-2M
Material	Aluminum
Length	78.75" (2m)
Width	0.80" (20.2mm)
Height	0.82" (20.8mm)
Internal Width	0.64" (16.3mm)



### Aluminum Serrated Clip



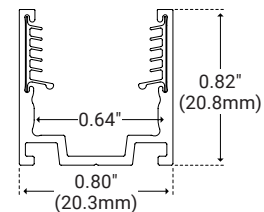
Unit Number	SW-K-CLP-AL-SR
Material	Aluminum
Length	0.79" (20.0mm)
Width	0.80" (20.2mm)
Height	0.82" (20.8mm)
Internal Width	0.64" (16.8mm)



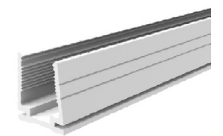
### Aluminum Serrated Flex Channel



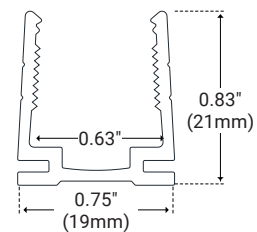
Unit Number	SW-K-CH-AL-FLX-1M
Material	Aluminum
Length	39.30" (1m)
Width	0.80" (20.2mm)
Height	0.82" (20.8mm)
Internal Width	0.64" (16.3mm)



### Plastic Mounting Channel



Unit Number	SW-K-CH-PL-2M
Material	Plastic
Length	78.75" (2m)
Width	0.75" (19mm)
Height	0.83" (21mm)
Internal Width	0.63" (16mm)



### Side Mounting Bracket



Unit Number	SW-CLP-RA
Material	Aluminum
Length	0.78" (20.0mm)
Width	0.98" (25.0mm)
Height	2.75" (70.0mm)

*Must be paired with channel*

