



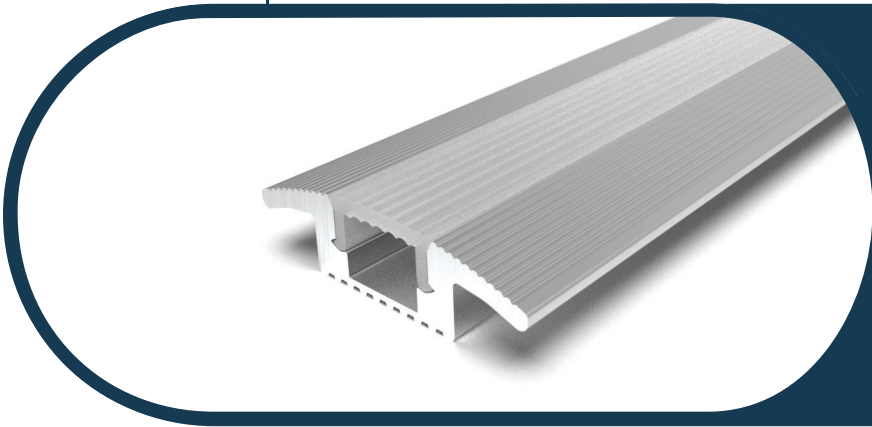
Complete Specification Sheet

CH-723

RIGID
CHANNEL

Channel 723

Extruded Aluminum Mounting Channel



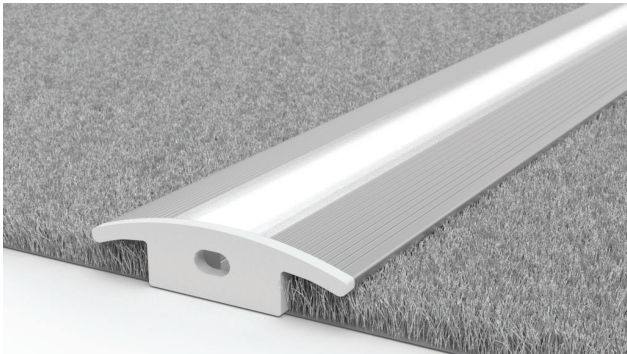
Specifications

Category	Rigid Channel
Series	Aisles
Family	CH-723
Width	1.50in (38.1mm)
Internal Width	0.40in (10.2mm)
Height	0.42in (10.8mm)
Material	Aluminum

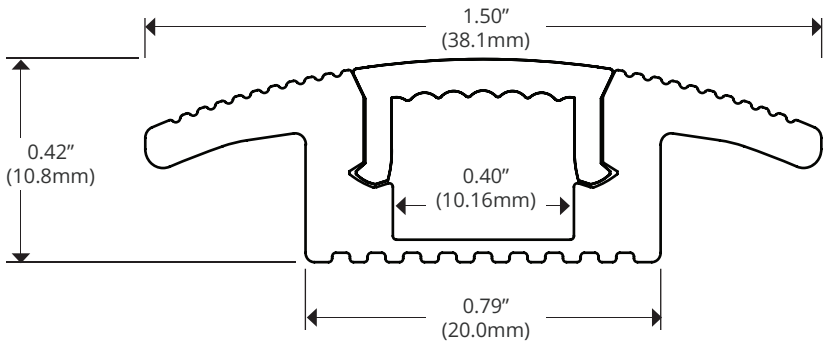
Features

- Available in 2 Meter Sections
- Extruded Aluminum Construction
- Anodized Matte Finish
- Consult Factory for Custom Lengths & Finishes

Application



Dimensions



Options

Silver Finish	S
Black Finish	B
Clear Lens	CL
Frosted Lens	FR
White Lens	WH
Surface Mount	SF
End Caps	EC

Kelvix reserves the right to update the product specifications at any time. To maintain warranty, field modifications must follow approved Kelvix installation instruction.

Fixture Type _____

Project Name _____

Location _____



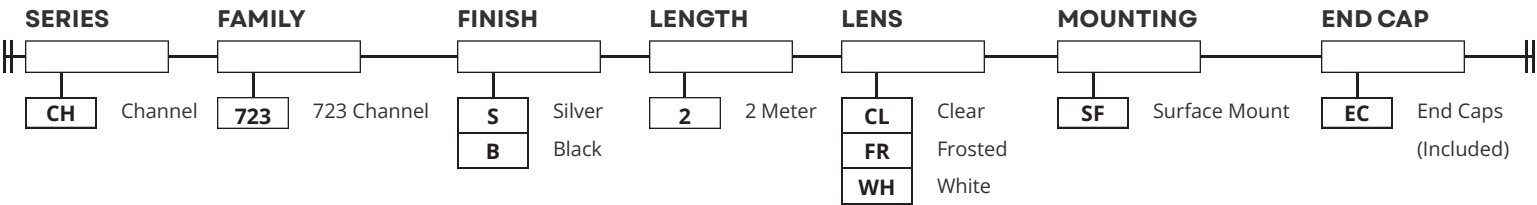
Product Code Builder

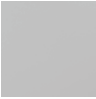

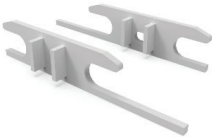
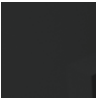
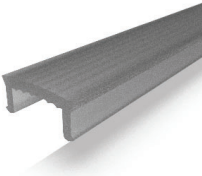
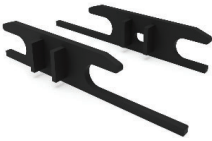
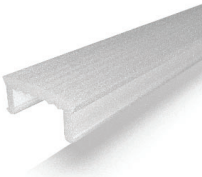
CH-723

RIGID
CHANNEL

Product Code Builder

Example: CH-723-S-2-CL-SF-EC



FINISH	LENS	END CAP
<div>Silver</div> 	<div>Clear</div>  <div>90% Light Transmission</div>	<div>Silver</div>  <div>With / Without Hole</div>
<div>Black</div> 	<div>Frosted</div>  <div>75% Light Transmission</div>	<div>Black</div>  <div>With / Without Hole</div>
	<div>White</div>  <div>35% Light Transmission</div>	

Kelvix reserves the right to update the product specifications at any time. To maintain warranty, field modifications must follow approved Kelvix installation instruction.

Fixture Type

Project Name

Location