



QUIX™

LINKABLE LED FIXTURE | 120-277 VOLT | 0-10V DIMMING

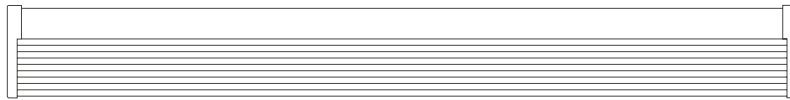
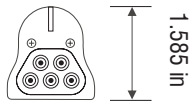
Fixture Type: _____

Project: _____

Location: _____

PRODUCT FEATURES

- 0-10V Direct Control
- Universal 120-277V Input
- Easy Linking Connection
- Diode Free Illumination
- Indoor Use
- Up to 200W Maximum Run Length



1 (14.4 in), 2 (22.44 in), 3 (34.49 in), 4 (46.45 in)

MODEL-LENGTH	INPUT VOLTAGE	WATTAGE	LUMEN						CRI
			2700K	3000K	3500K	4000K	5000K	6000K	
1-14.4"	120-277V AC	5W	468 lm	493 lm	516 lm	522 lm	543 lm	570 lm	80+
2-22.4"	120-277V AC	9W	909 lm	957 lm	1007 lm	987 lm	1026 lm	1078 lm	80+
4-46.45"	120-277V AC	18W	1898 lm	1956 lm	2028 lm	2019 lm	2100 lm	2205 lm	80+

ORDERING INFORMATION

Example: QX-550-30K-1-010V-120277-SV

Item	Output	CCT	Length	Dimming	Input Voltage	Finish
QX	550			010V	120277	
QX—Quix	550—550 lm/ft	27K—2700K 30K—3000K 35K—3500K 40K—4000K 50K—5000K 60K—6000K	1—14.4" 2—22.4" 4—46.45"	010V	120277—120V-277V	SV—Silver SVM—Silver Antimicrobial

Conforms to ANSI/UL Standard 1598
Certified to CAN/CSA Standard C22.2 No. 9





QUIX™ COMPONENTS



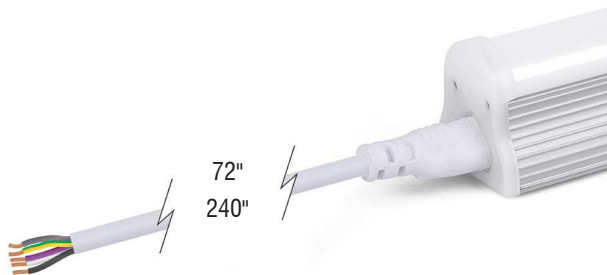
EASY LINKING CONNECTION

Multiple Quix fixtures can be connected in series.
No accessory required. Remove end cap and connect.
Do not exceed 200W.



MOUNTING CLIPS INCLUDED WITH FIXTURE

QUIX™ ACCESSORIES



HARDWIRE POWER FEED

Connect Quix to AC line voltage power source within j-box. All Quix fixtures will come standard with a 6" hardwire power feed

QX-CM-PWR-HW-72-WH | 72" Power Feed

QX-CM-PWR-HW-240-WH | 240" Power Feed



CORD COUPLER

Connects multiple Quix fixtures in series allowing separation
Do not exceed 200W.

QX-CM-CC-6-WH | 6" Cord Coupler

QX-CM-CC-24-WH | 24" Cord Coupler

QX-CM-CC-72-WH | 72" Cord Coupler



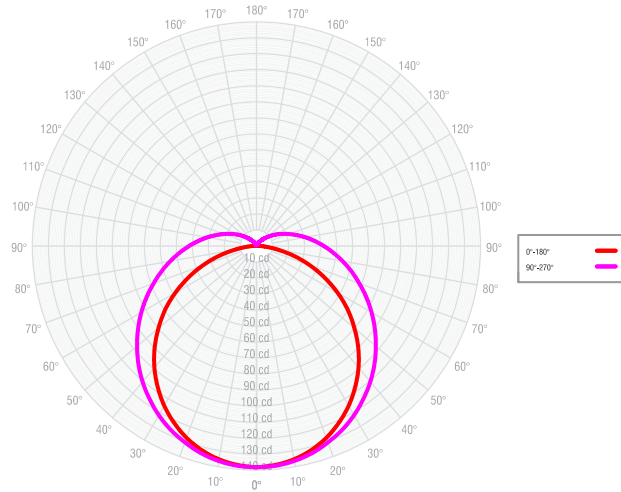
QUIX™ PHOTOMETRICS

QX-550-35K-1-010V-120277-SV
14.4" LENGTH

CONE OF LIGHT

MTG HEIGHT	LIGHT LEVEL	BEAM DIAMETER
1.0 ft	138.2 fc	2.9 ft
3.0 ft	15.4 fc	8.7 ft
5.0 ft	5.5 fc	14.4 ft
10.0 ft	1.4 fc	28.9 ft
15.0 ft	.6 fc	43 ft

CANDELA POLAR PLOT

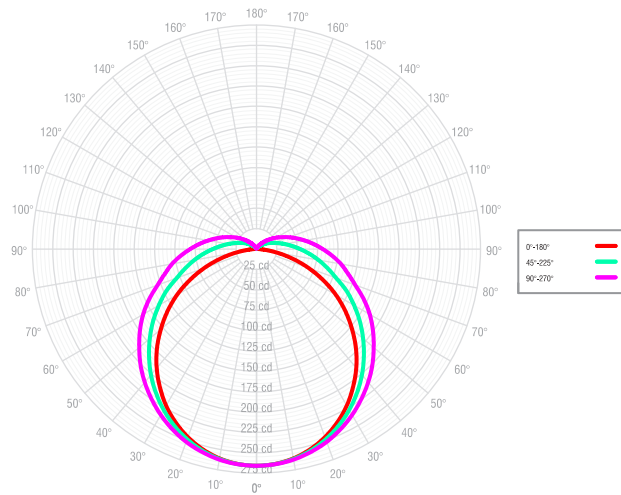


QX-550-35K-2-010V-120277-SV
22.4" LENGTH

CONE OF LIGHT

MTG HEIGHT	LIGHT LEVEL	BEAM DIAMETER
1.0 ft	266.1 fc	2.9 ft
3.0 ft	29.6 fc	8.6 ft
5.0 ft	10.6 fc	14.3 ft
10.0 ft	2.7 fc	28.7 ft
15.0 ft	1.2 fc	43.0 ft

CANDELA POLAR PLOT





QUIX™ PHOTOMETRICS

QX-550-35K-4-010V-120277-SV
46.45" LENGTH

CONE OF LIGHT

MTG HEIGHT	LIGHT LEVEL	BEAM DIAMETER
1.0 ft	552.9 fc	2.8 ft
3.0 ft	61.4 fc	8.3 ft
5.0 ft	22.1 fc	13.9 ft
10.0 ft	5.5 fc	27.8 ft
15.0 ft	2.5 fc	41.6 ft

CANDELA POLAR PLOT

