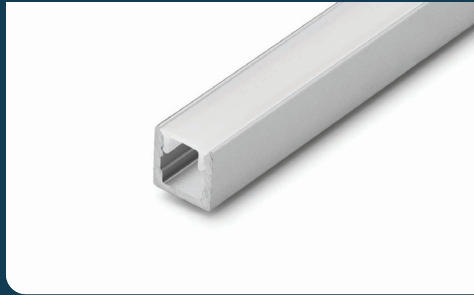


FIXTURE TYPE \_\_\_\_\_

PROJECT NAME \_\_\_\_\_

LOCATION \_\_\_\_\_



# CH-0400

THIN LINE



## I Description

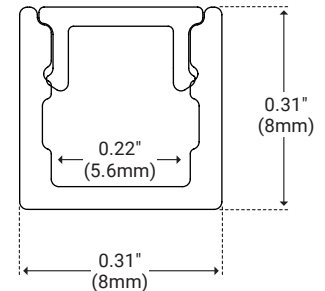
Add Linear Lighting to the Tightest of Spaces With Our Thin Line Tape and Channel Store in Temperature-Controlled Environment.

## I Features

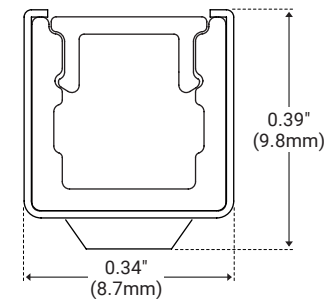
- Available In 78.74" (2m) Sections
- Extruded Aluminum Construction
- Anodized Matte Finish
- Consult Factory for Custom Lengths
- Available in Various Finish Colors

## I Dimensions

Length	78.74" (2m)
Width (External)	0.31" (8mm)
Width (Internal)	0.22" (5.6mm)
Height	0.31" (8mm)



CHANNEL + MOUNTING CLIP



## I Ordering Code Builder

Series	Length	Lens	Mounts	End Caps
<b>CH0400</b>	<b>2</b>		<b>MMC</b>	<b>EC</b>
<b>CH0400</b> – CH-0400	<b>2</b> – 2 Meters	<b>WH</b> – White Lens <b>BK</b> – Black Lens	<b>MMC</b> – Metal Clip	<b>EC</b> – End Cap Pair

Example: CH0400-2-WH-MMC-EC



## I Lens



### White Lens

Unit Number	CH-LNS-AI-WH-2M	Ordering Code WH
Dimension	L 78.74" (2m)      W 0.26" (6.6mm)	H 0.12" (3.1mm)
Light transmission	70%	



### Black Lens

Unit Number	CH-LNS-AI-BK-2M	Ordering Code BK
Dimension	L 78.74" (2m)      W 0.26" (6.6mm)	H 0.12" (3.1mm)
Light transmission	30%	

## I Mounts



### Metal Mounting Clips

Unit Number	CH-CLP-0400-M	Ordering Code MMC
Dimension	L 0.47" (12.1mm)      W 0.34" (8.7mm)	H 0.39" (9.8mm)

## I End Cap



### End Cap Pair

Unit Number	CH-EC-0400	Ordering Code EC
Dimension	L 0.17" (4.4mm)      W 0.31" (7.94mm)	H 0.31" (7.94mm)

## I Optional Accessories

Product	Unit Number	Description
Accessory Pack	CH-PAK-0400	Accessories pack includes 1 pair of end caps and 4 metal clips.