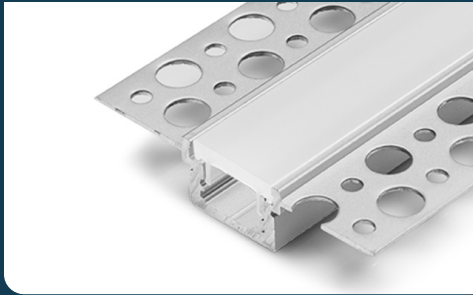


FIXTURE TYPE _____

PROJECT NAME _____

LOCATION _____



CH-0202

FLOOR WALL CEILING



I Description

Create consistent lines of light that seamlessly transition from the floor to the wall to the ceiling with this family of channels. CH-0202 is ideal for drywall applications.

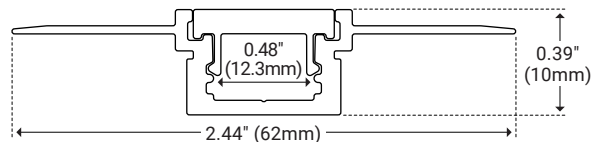
Consult Factory for Compatible Light Sources When Using Channel in a Floor Application. Store in a Temperature-Controlled Environment.

I Features

- Walkover Rated
- Available In 78.74" (2m) Sections
- Extruded Aluminum Construction
- Anodized Matte Finish
- Consult Factory for Custom Lengths
- Available in Various Finish Colors

I Dimensions

Length	78.74" (2m)
Width (External)	2.44" (62mm)
Width (Internal)	0.48" (12.3mm)
Height	0.39" (10mm)



I Ordering Code Builder

Series	Length	Lens	End Caps
CH0202	2	WH	EC
CH0202 – CH-0202	2 – 2 Meters	WH – White Lens	EC – End Cap Pair

Example: CH0202-2-WH-EC



I Lens



White Lens

Unit Number	CH-LNS-AH-WH-2M	Ordering Code	WH
Dimension	L 78.74" (2m)	W 0.68" (17.3mm)	H 0.30" (7.7mm)
Light transmission	65%		



Disposable Cover

Unit Number	CH-LNS-AH-DISP-2M	Ordering Code	INCLUDED
Dimension	L 78.74" (2m)	W 0.68" (17.3mm)	H 0.30" (7.7mm)
Description	Used to protect interior LED area during installation.		

I End Cap



End Cap Pair

Unit Number	CH-EC-0202	Ordering Code	EC
Dimension	L 0.17" (4.4mm)	W 0.85" (21.7mm)	H 0.51" (13mm)