

FIXTURE TYPE \_\_\_\_\_

PROJECT NAME \_\_\_\_\_

LOCATION \_\_\_\_\_



# AC Zolo™ 7

LINE VOLTAGE WASHER/GRAZER

Store in a Temperature-Controlled Environment.



## Features

- High Purity Tempered Glass
- Extruded Aluminum Alloy Housing
- Available in Titanium Gray, Black, or White Finish\*
- Daisy Chain Multiple Fixtures
- IP66 Outdoor Rated
- Louver Options Available

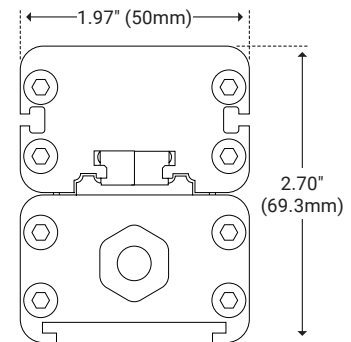
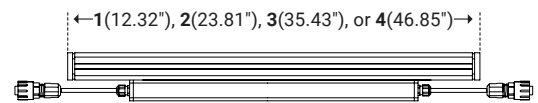
## Dimensions

|        |                      |
|--------|----------------------|
| Length | Variable (see below) |
| Width  | 1.97" (50mm)         |
| Height | 2.70" (69.3mm)       |

## Specifications

|                       |                                  |
|-----------------------|----------------------------------|
| Input Voltage         | 120–277VAC                       |
| Watts per Foot        | 9W*                              |
| Lumen per Watt        | 100 lm/W                         |
| Lumen per Foot        | 900 lm/ft                        |
| Beam Spread           | 20°x40°, 13°, 20°, 25°, 35°, 50° |
| Max Run Length        | 75ft at 120VAC                   |
| CRI                   | 85*                              |
| Dimming Options       | 0–10V, DMX, DALI, ON/OFF         |
| Operating Temp. Range | -40°F (-40°C) to 140°F (60°C)    |

\* Customizable—Consult Factory



## I Ordering Code Builder

| Item   | Length  | Power*  | Fixture Type                                   | Dimming   |
|--|---|---|--|---|
| <b>Z7AC</b>  |   | <b>9</b>  | <b>W</b>                                       |   |
| Z7AC – AC Zolo 7                                     | 1 – 12.32" (313mm)<br>2 – 23.81" (605mm)<br>3 – 35.43" (900mm)<br>4 – 46.85" (1190mm) | 9 – 9W/ft   | W – White Light                                | Z – 0-10V<br>X – DMX<br>D – DALI<br>F – ON/OFF      |
| Color*   | Beam Angle  | Mounting  | Finish*  | Option  |
|  |   |   |  |   |
| 27 – 2700K<br>30 – 3000K<br>35 – 3500K<br>40 – 4000K | 2040 – 20°x40°<br>13 – 13°<br>20 – 20°<br>25 – 25°<br>35 – 35°<br>50 – 50°            | S2 – 2" Stand Off<br>S3 – 3" Stand Off<br>GS – Ground Stake<br>L3 – L Bracket | TG – Titanium Gray<br>BK – Black<br>WH – White | NA – None<br>LV – Louver<br>ALV – Asymmetric Louver |

Example: Z7AC-1-9-W-Z-27-2040-S2-TG-LV

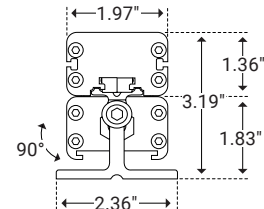
\* Customizable—Consult Factory

## I Mounting

### 2" Stand Off



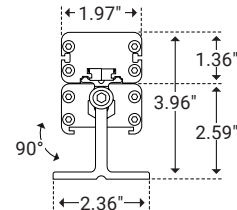
|                  |                |
|------------------|----------------|
| Unit Number      | Z-07-S2        |
| Ordering Code    | S2             |
| Foot Length      | 1.18" (30mm)   |
| Foot Width       | 2.36" (60mm)   |
| Stand Off Height | 1.83" (46.4mm) |



### 3" Stand Off



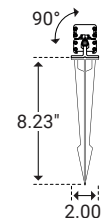
|                  |              |
|------------------|--------------|
| Unit Number      | Z-07-S3      |
| Ordering Code    | S3           |
| Foot Length      | 1.18" (30mm) |
| Foot Width       | 2.36" (60mm) |
| Stand Off Height | 2.59" (66mm) |



### Ground Stake



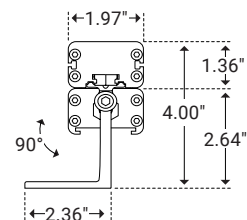
|               |               |
|---------------|---------------|
| Unit Number   | Z-07-GS       |
| Ordering Code | GS            |
| Stake Length  | 8.23" (209mm) |
| Stake Width   | 1.96" (50mm)  |



### L Bracket



|                  |                |
|------------------|----------------|
| Unit Number      | Z-07-L3        |
| Ordering Code    | L3             |
| Foot Length      | 1.18" (30mm)   |
| Foot Width       | 2.36" (59.9mm) |
| Stand Off Height | 2.64" (66.9mm) |

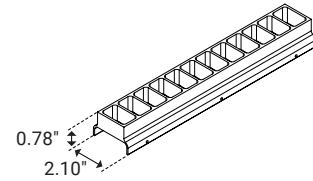


## I Glare Options

### Louver



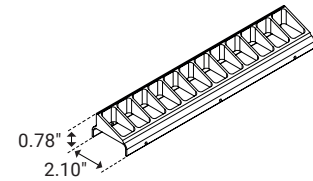
|                |                |
|----------------|----------------|
| Unit Number    | Z-07-LV        |
| Ordering Code  | LV             |
| Louver Width   | 2.10" (53.3mm) |
| Louver Height  | 0.78" (20mm)   |
| Overall Height | 1.29" (33mm)   |



### Asymmetric Louver



|                |                |
|----------------|----------------|
| Unit Number    | Z-07-ALV       |
| Ordering Code  | ALV            |
| Louver Width   | 2.10" (53.3mm) |
| Louver Height  | 0.78" (20mm)   |
| Overall Height | 1.29" (33mm)   |

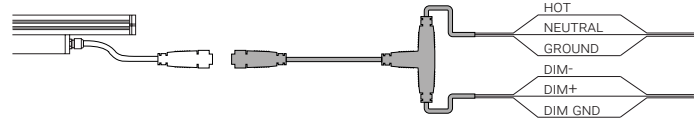


## I Power & Connectors

### Power Lead



| Unit Number  | Length |
|--------------|--------|
| Z-7AC-FML-6  | 6ft    |
| Z-7AC-FML-20 | 20ft   |
| Z-7AC-FML-50 | 50ft   |



### Connector



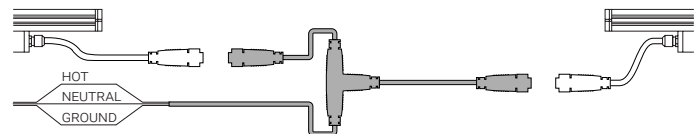
| Unit Number | Length |
|-------------|--------|
| Z-7AC-FMC-1 | 1ft    |
| Z-7AC-FMC-2 | 2ft    |
| Z-7AC-FMC-6 | 6ft    |



### T-Connector



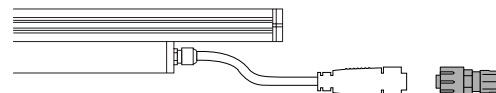
| Unit Number      |
|------------------|
| Z-7AC-TCONNECTOR |



### End Cap



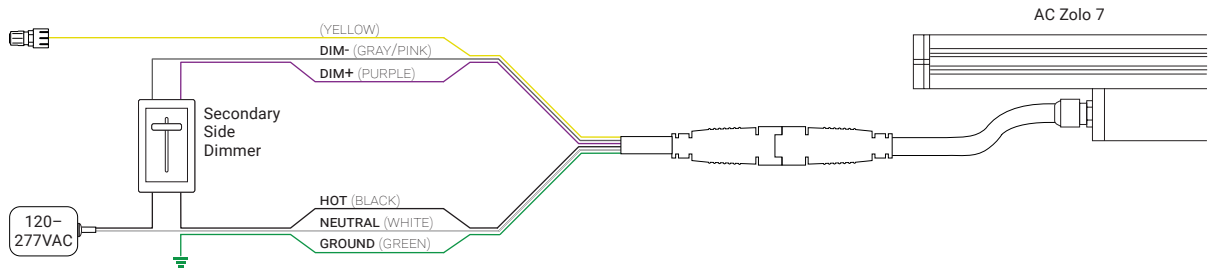
| Unit Number   |
|---------------|
| Z-7AC-END-DMX |
| Z-7AC-END     |



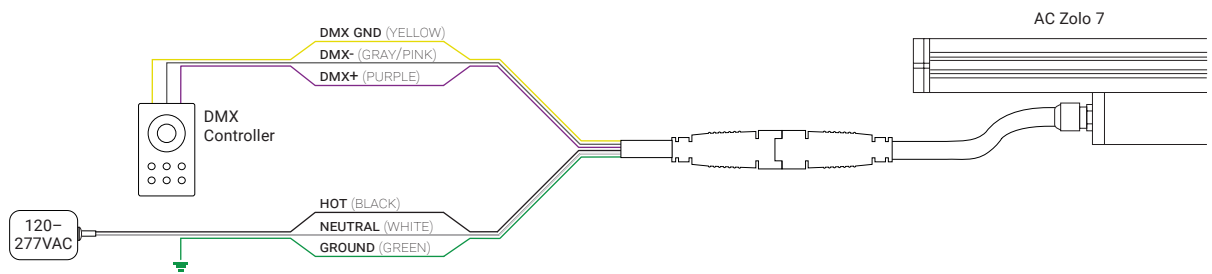


# I Wiring Options

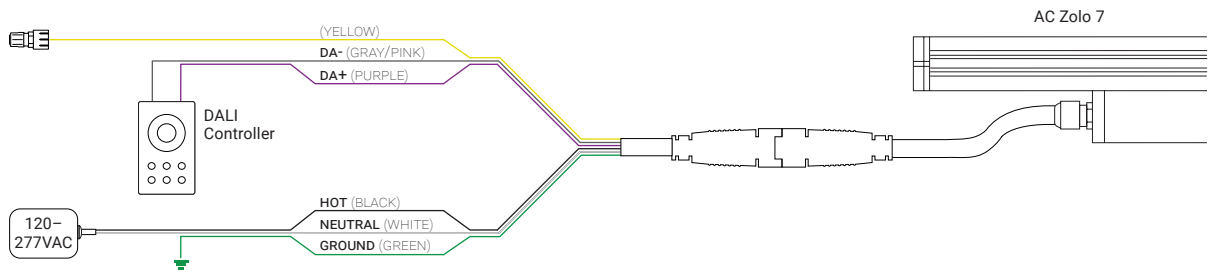
## 0-10V



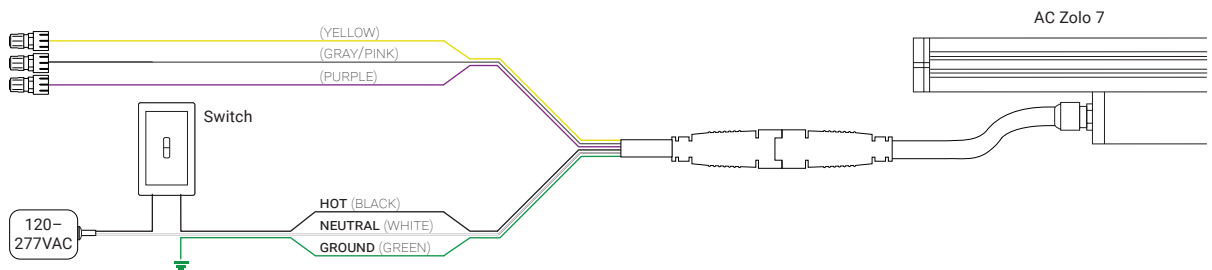
## DMX



## DALI

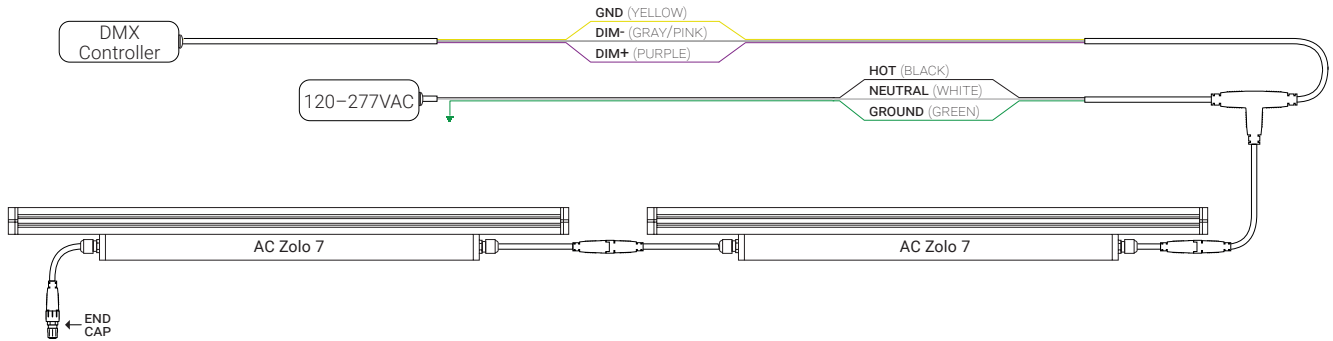


## ON/OFF



# I Daisy Chain

## Multiple Fixtures



## Multiple Power Sources

