

FIXTURE TYPE _____

PROJECT NAME _____

LOCATION _____



AC Zolo™ 7 RGBW Alternating

LINE VOLTAGE WASHER/GRAZER

Store in a Temperature-Controlled Environment.



Features

- High Purity Tempered Glass
- Extruded Aluminum Alloy Housing
- Available in Titanium Gray, Black, or White Finish*
- Daisy Chain Multiple Fixtures
- IP66 Outdoor Rated
- Louver Options Available

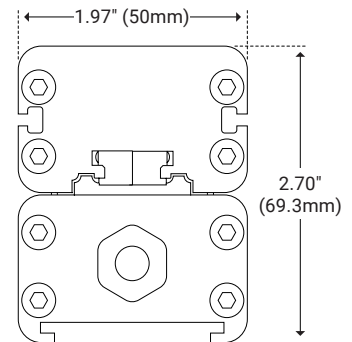
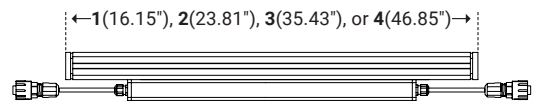
Dimensions

| | |
|--------|----------------------|
| Length | Variable (see below) |
| Width | 1.97" (50mm) |
| Height | 2.70" (69.3mm) |

Specifications

| | |
|-----------------------|----------------------------------|
| Input Voltage | 120–277VAC |
| Watts per Foot | 11W* |
| Lumen per Watt | 51 lm/W |
| Lumen per Foot | 670 lm/ft |
| Beam Spread | 10°×55°, 13°, 20°, 25°, 35°, 50° |
| Max Run Length | 50ft at 120VAC |
| CRI | 85* |
| Dimming Options | DMX |
| Operating Temp. Range | -40°F (-40°C) to 140°F (60°C) |

* Customizable—Consult Factory





I Ordering Code Builder

| Item | Length | Power* | Fixture Type | Dimming |
|--|---|---|--|---|
| Z7AC | | 11 | A | X |
| Z7AC—AC Zolo 7 | 1—16.15" (410mm) 2—23.81" (605mm) 3—35.43" (900mm) 4—46.85" (1190mm) | 11—11W/ft | A—Alternating | X—DMX |
| Color* | Beam Angle | Mounting | Finish* | Option |
| | | | | |
| 27—2700K 30—3000K 35—3500K 40—4000K | 1055—10°x55° 13—13° 20—20° 25—25° 35—35° 50—50° | S2—2" Stand Off S3—3" Stand Off GS—Ground Stake L3—L Bracket | TG—Titanium Gray BK—Black WH—White | NA—None LV—Louver ALV—Asymmetric Louver |

Example: Z7AC-1-11-A-X-27-1055-S2-TG-LV

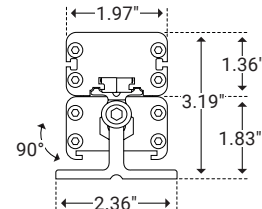
* Customizable—Consult Factory

I Mounting

2" Stand Off



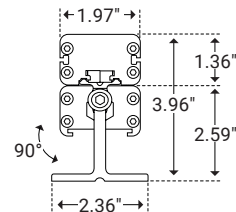
| | |
|------------------|----------------|
| Unit Number | Z-07-S2 |
| Ordering Code | S2 |
| Foot Length | 1.18" (30mm) |
| Foot Width | 2.36" (60mm) |
| Stand Off Height | 1.83" (46.4mm) |



3" Stand Off



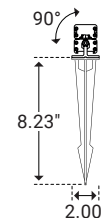
| | |
|------------------|--------------|
| Unit Number | Z-07-S3 |
| Ordering Code | S3 |
| Foot Length | 1.18" (30mm) |
| Foot Width | 2.36" (60mm) |
| Stand Off Height | 2.59" (66mm) |



Ground Stake



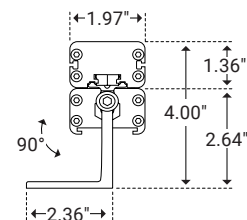
| | |
|---------------|---------------|
| Unit Number | Z-07-GS |
| Ordering Code | GS |
| Stake Length | 8.23" (209mm) |
| Stake Width | 1.96" (50mm) |



L Bracket



| | |
|------------------|----------------|
| Unit Number | Z-07-L3 |
| Ordering Code | L3 |
| Foot Length | 1.18" (30mm) |
| Foot Width | 2.36" (59.9mm) |
| Stand Off Height | 2.64" (66.9mm) |



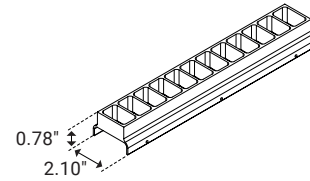


| Glare Options

Louver



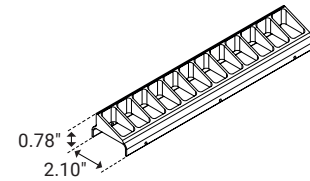
| | |
|----------------|----------------|
| Unit Number | Z-07-LV |
| Ordering Code | LV |
| Louver Width | 2.10" (53.3mm) |
| Louver Height | 0.78" (20mm) |
| Overall Height | 1.29" (33mm) |



Asymmetric Louver



| | |
|----------------|----------------|
| Unit Number | Z-07-ALV |
| Ordering Code | ALV |
| Louver Width | 2.10" (53.3mm) |
| Louver Height | 0.78" (20mm) |
| Overall Height | 1.29" (33mm) |

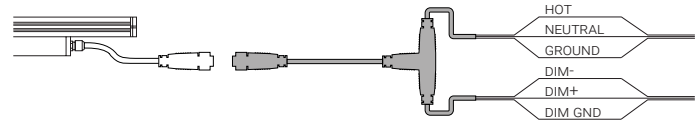


| Power & Connectors

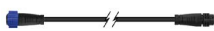
Power Lead



| Unit Number | Length |
|--------------|--------|
| Z-7AC-FML-6 | 6ft |
| Z-7AC-FML-20 | 20ft |
| Z-7AC-FML-50 | 50ft |



Connector



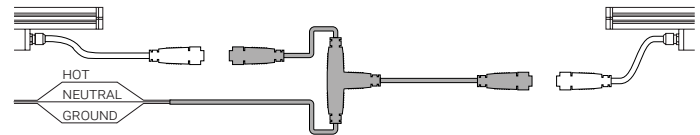
| Unit Number | Length |
|-------------|--------|
| Z-7AC-FMC-1 | 1ft |
| Z-7AC-FMC-2 | 2ft |
| Z-7AC-FMC-6 | 6ft |



T-Connector



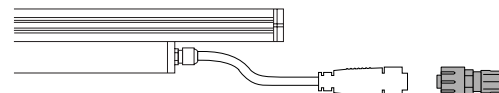
| | |
|-------------|------------------|
| Unit Number | Z-7AC-TCONNECTOR |
|-------------|------------------|



End Cap

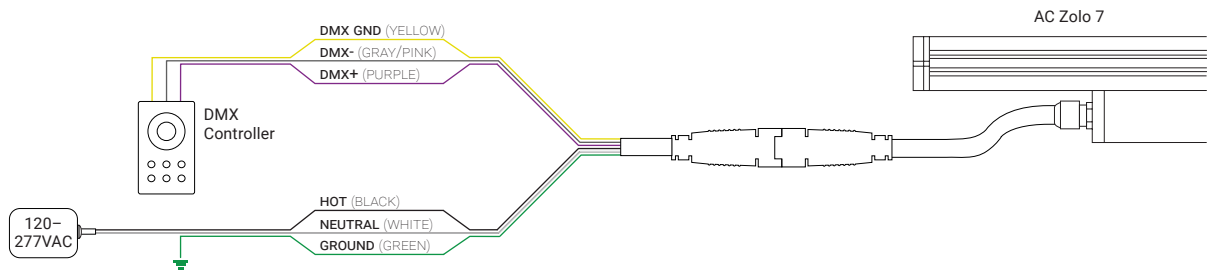


| | |
|-------------|---------------|
| Unit Number | Z-7AC-END-DMX |
| | Z-7AC-END |



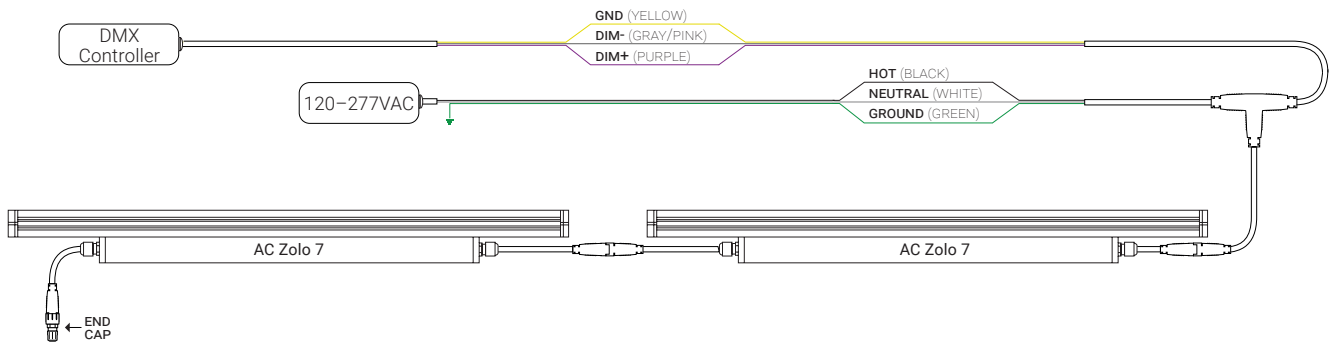
| Wiring Options

DMX



| Daisy Chain

Multiple Fixtures



Multiple Power Sources

