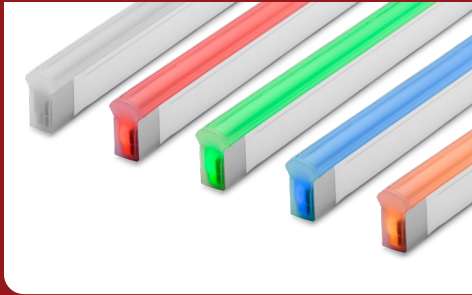


FIXTURE TYPE _____

PROJECT NAME _____

LOCATION _____



Signwave® 7

WIDE VIEWING ANGLE PIXEL CONTROL
FLEXIBLE LIGHTING SYSTEM



I Description

SignWave 7 is a Digital pixel controlled RGBW system offering unlimited light show potential.

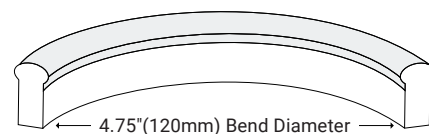
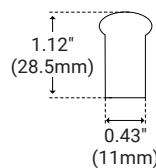
I Features

- Digital Pixel Control RGBW
- Dimmable
- 50,000 Hour Life
- Domed Profile for Large Beam Angle
- IP67 or IP68 Option
- UL-Listed for Indoor and Outdoor Use
- Factory-Installed Power Feed
- Injection-Molded Flush End Caps
- For Use with 24V Power Supplies

I Specifications

Series	SW7
Input Voltage	24V DC
Lumens per Foot	86 lm/ft (Red, Green, Blue, & White)
Watts per Foot	4.6 W/ft
Beam Angle	320°
Max Run Length	16.4 ft / 40 Pixels*
Beam Angle	320°
Dimensions	0.43" (11.5mm) × 1.12" (29.0mm)
Production Intervals	4.93" (125.0mm)
Pixel Length	4.93" (125.0mm)
Dimming Options	SPI, UCS2904
Operating Temp	-4°F (-20°C) to 95°F (35°C)
Storage Temp	-4°F (-20°C) to 140°F (60°C)

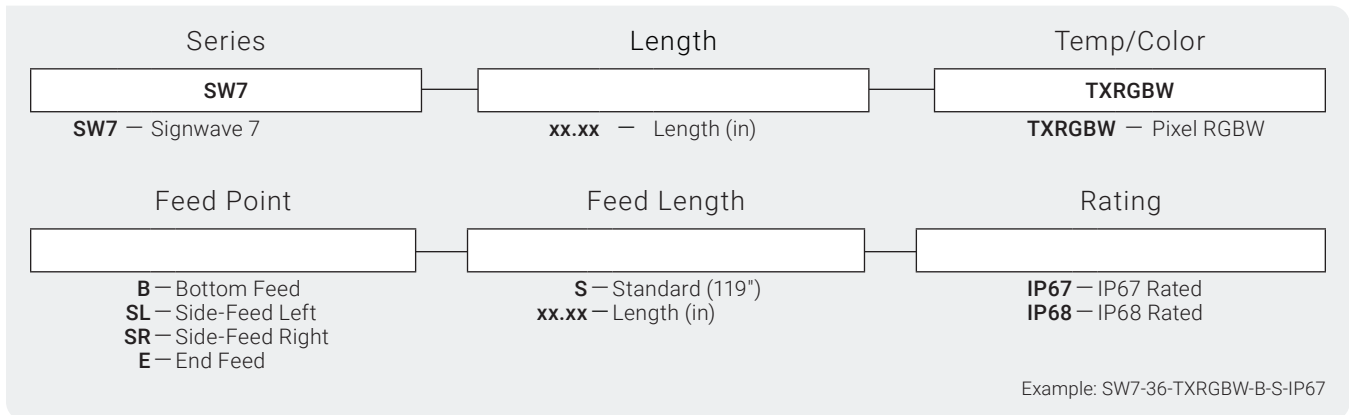
I Dimensions



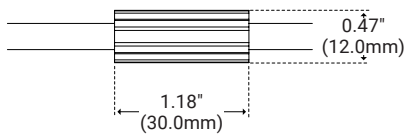
30ft distance limitation from fixture to SPI bridge
Conforms to ANSI/UL Standard 2108
Certified to CAN/CSA Standard C22.2 No. 250.0
* To mitigate risks associated with thermal expansion and contraction, outdoor applications are limited to 9ft fixture lengths.



Product Code Builder

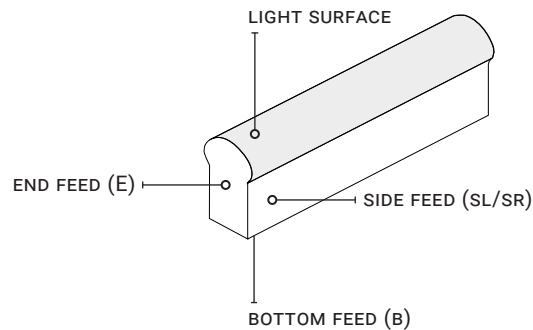


Ferrule



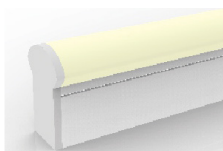
DryWire ferrule located 4.53" (± 0.39 ") from the cable connector. Protects against damage from water ingress inside cable wire. Please note that any attempt to remove the anti-wicking ferrule will result in the voiding of the warranty.

Feed Locations



End Cap

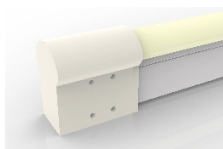
End Cap (IP67)



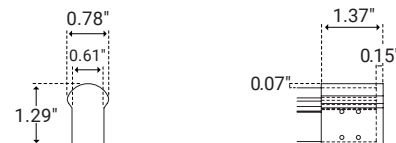
Unit Number	EC
Unit Width	0.63" (16.0mm)
Unit Height	1.14" (29.0mm)



End Cap (IP68)



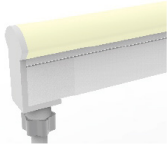
Unit Number	EC
Unit Width	0.78" (19.8mm)
Unit Height	1.29" (32.7mm)



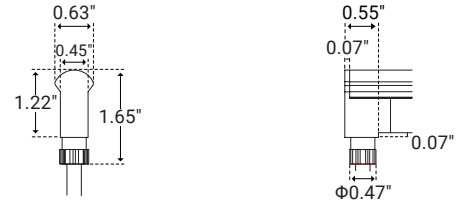


I Feed Options

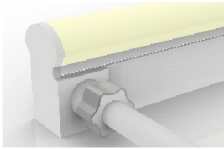
Bottom Feed (IP67)



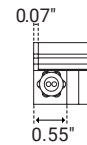
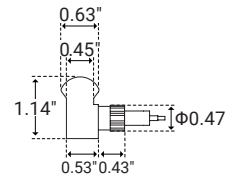
Unit Number	B
Unit Width	0.63" (16.0mm)
Unit Height	1.65" (41.9mm)



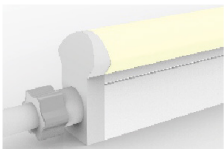
Side Feed Right/Left (IP67)



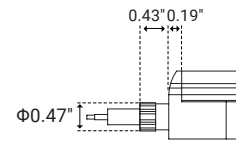
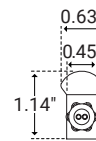
Unit Number	SL/SR
Unit Width	0.96" (24.3mm)
Unit Height	1.14" (28.9mm)



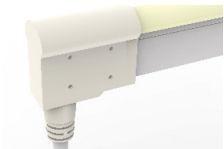
End Feed (IP67)



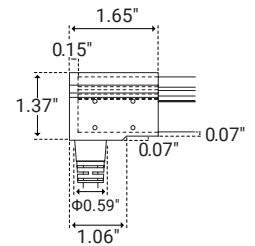
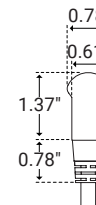
Unit Number	E
Unit Width	0.63" (16.0mm)
Unit Height	1.14" (28.9mm)



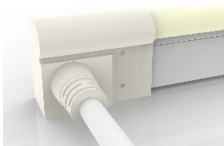
Bottom Feed (IP68)



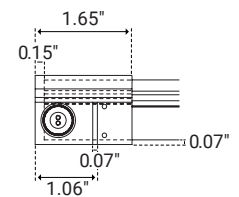
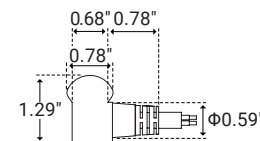
Unit Number	B
Unit Width	0.78" (19.8mm)
Unit Height	2.15" (54.6mm)



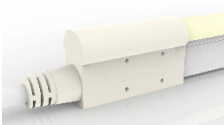
Side Feed Right/Left (IP68)



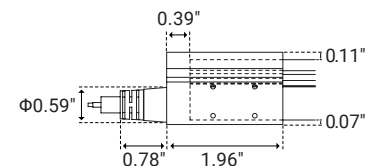
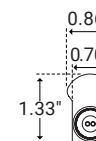
Unit Number	SL/SR
Unit Width	1.46" (37.0mm)
Unit Height	1.29" (32.7mm)



End Feed (IP68)



Unit Number	E
Unit Width	0.86" (21.8mm)
Unit Height	1.33" (33.7mm)



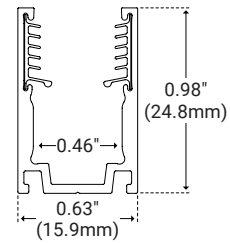


I Accessories

Aluminum Serrated Channel



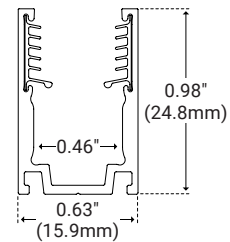
Unit Number	SW-E-AL-CH-SR-2M
Material	Aluminum
Length	78.75" (2m)
Width	0.63" (15.9mm)
Height	0.98" (24.8mm)
Internal Width	0.46" (11.8mm)



Aluminum Serrated Clip



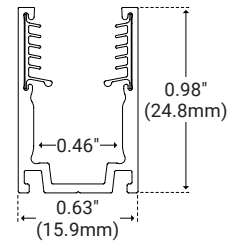
Unit Number	SW-E-CLP-AL-SR
Material	Aluminum
Length	0.79" (20.0mm)
Width	0.63" (15.9mm)
Height	0.98" (24.8mm)
Internal Width	0.46" (11.8mm)



Aluminum Serrated Flex Channel



Unit Number	SW-E-CH-AL-FLX-1M
Material	Aluminum
Length	39.30" (1m)
Width	0.63" (15.9mm)
Height	0.98" (24.8mm)
Internal Width	0.46" (11.8mm)



Side Mounting Bracket



Unit Number	SW-CLP-RA
Material	Aluminum
Length	0.78" (20.0mm)
Width	0.98" (25.0mm)
Height	2.75" (70.0mm)
<i>Must be paired with channel</i>	

