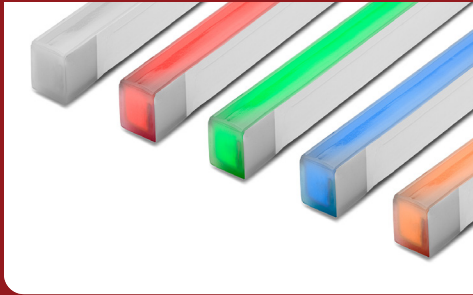


FIXTURE TYPE _____

PROJECT NAME _____

LOCATION _____



Signwave® 3 PSF

NARROW VIEW POOL AND FOUNTAIN RATED



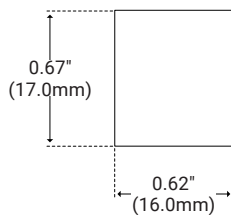
I Description

Signwave 3 PSF is the only series offered with Horizontal or Vertical bending options. The perfectly flat top of Signwave 3 PSF provides greatly reduced side-viewing angles and concentrates the incredibly bright illumination onto a single direct-view surface.

I Features

- Dimmable
- 50,000 Hour Life
- Salt Water Safe
- Flat Profile for Streamline Projects
- Horizontal or Vertical Bending Option
- IP68 Permanent Installation Underwater up to 6.56ft (2m)
- UL676 Listed for Pool, Spa, and Fountain Use
- Factory-Installed Power Feed
- For Use with 24V Power Supplies

I Dimensions

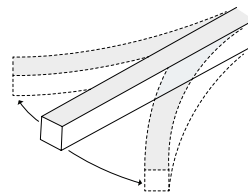


I Specifications

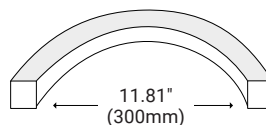
Series	SW3PSF
Temp/Color	White, Red, Green, Blue, Amber, TX, CT (2200K–5700K)
Input Voltage	24V DC
Lumens per Foot	137 (White Light)
Watts per Foot	2.44–6.71 [†]
Beam Spread	160°
CRI	80+
Max Run Length	Unlimited
Dimensions	0.62" (16.0mm) × 0.67" (17.0mm)
Dimming Options	PWM, Triac, 0–10V, DMX, Hi-lume
Operating Temp	-40°F (-40°C) to 140°F (60°C)

I Bending Options

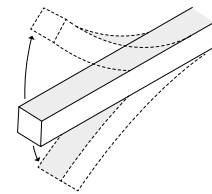
HORIZONTAL



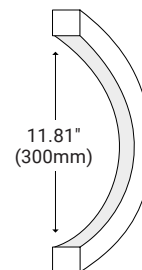
HORIZONTAL BEND DIAMETER



VERTICAL



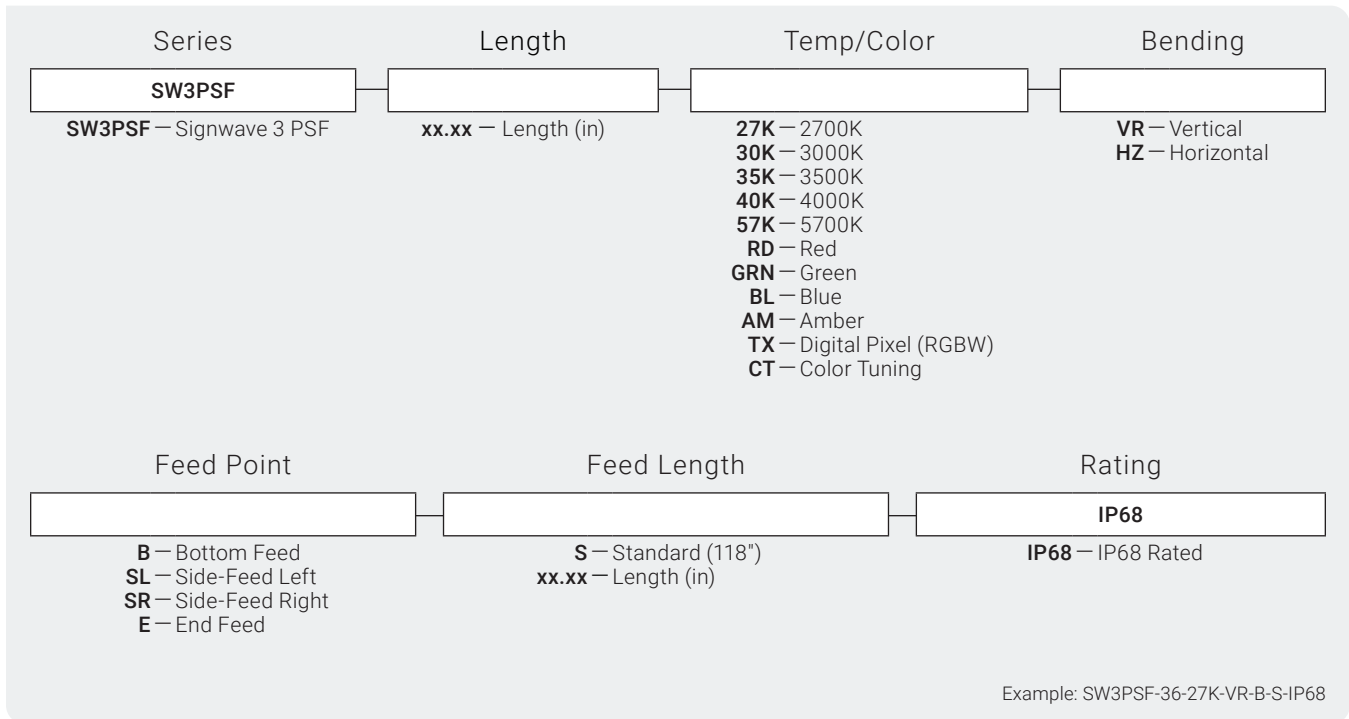
VERTICAL BEND DIAMETER



[†] See Series Data for more information



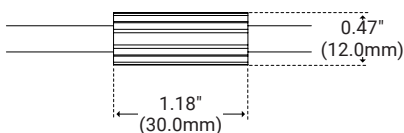
Product Code Builder



Series Data

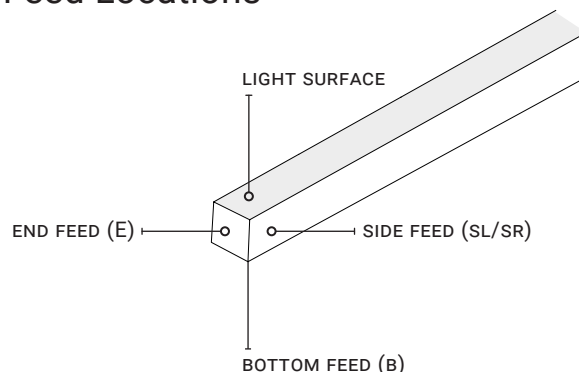
	White (Specify CCT)	Red	Green	Blue	Amber	TX	CT (22K–57K)
Wavelength (nm)	N/A	620–630	520–530	465–475	585–595	N/A	N/A
Wattage (W/ft)	3.65	2.44	3.65	3.65	2.44	6.71	3.65
Power Feed (ft)	Every 22ft	Every 33ft	Every 22ft	Every 22ft	Every 33ft	Every 16ft	Every 22ft
Production Intervals (in)	2.19"	3.28"	2.19"	2.19"	3.28"	3.28"	3.28"

Ferrule



DryWire ferrule located 4.53" (± 0.39 ") from the cable connector. Protects against damage from water ingress inside cable wire. Please note that any attempt to remove the anti-wicking ferrule will result in the voiding of the warranty.

Feed Locations





I Power Supply

PF90-24V



Model	PF90-24V
Input Voltage	120V AC, 60Hz
Output Voltage	24V DC/Constant Voltage
Max Wattage	92W
Length	12.19" (310.0mm)
Width	5.88" (150.0mm)
Height	3.94" (100.0mm)

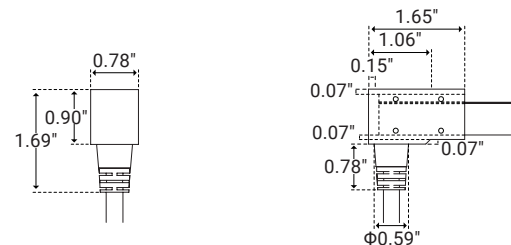
- Power Supply for Plug-in-Pool System
- 24V DC Safety Power Supply
- Maximum Power Consumption 92W
- ON/OFF Switch and Breaker on Front Panel
- For Use with Kelvix Signwave® 3 Pool, Spa & Fountain

I Feed Options

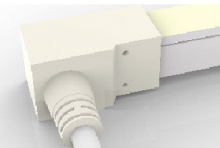
Bottom Feed (IP68)



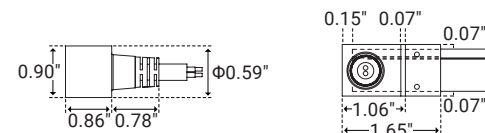
Unit Number	B
Unit Width	0.78" (19.8mm)
Unit Height	1.69" (42.9mm)



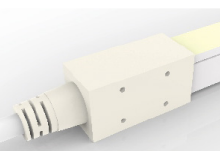
Side Feed Right/Left (IP68)



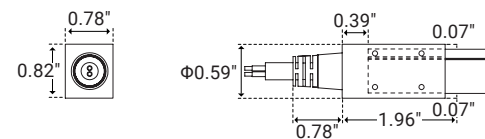
Unit Number	SR/SL
Unit Width	0.90" (22.8mm)
Unit Height	1.64" (41.6mm)



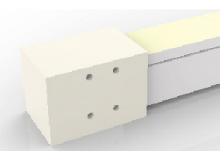
End Feed (IP68)



Unit Number	E
Unit Width	0.78" (19.8mm)
Unit Height	0.82" (20.8mm)



End Cap (IP68)



Unit Number	EC
Unit Width	0.78" (19.8mm)
Unit Height	0.82" (20.8mm)



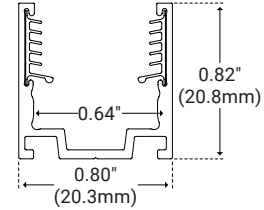


I Accessories

Aluminum Serrated Channel



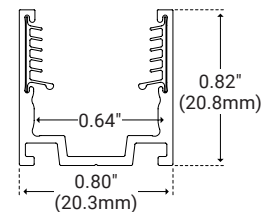
Unit Number	SW-K-AL-CH-SR-2M
Material	Aluminum
Length	78.75" (2m)
Width	0.80" (20.2mm)
Height	0.82" (20.8mm)
Internal Width	0.64" (16.3mm)



Aluminum Serrated Clip



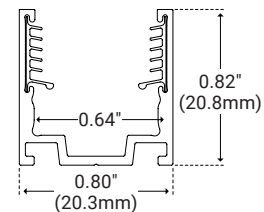
Unit Number	SW-K-CLP-AL-SR
Material	Aluminum
Length	0.79" (20.0mm)
Width	0.80" (20.2mm)
Height	0.82" (20.8mm)
Internal Width	0.64" (16.8mm)



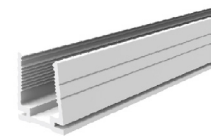
Aluminum Serrated Flex Channel



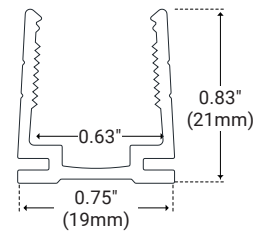
Unit Number	SW-K-CH-AL-FLX-1M
Material	Aluminum
Length	39.30" (1m)
Width	0.80" (20.2mm)
Height	0.82" (20.8mm)
Internal Width	0.64" (16.3mm)



Plastic Mounting Channel



Unit Number	SW-K-CH-PL-2M
Material	Plastic
Length	78.75" (2m)
Width	0.75" (19mm)
Height	0.83" (21mm)
Internal Width	0.63" (16mm)



Side Mounting Bracket



Unit Number	SW-CLP-RA
Material	Aluminum
Length	0.78" (20.0mm)
Width	0.98" (25.0mm)
Height	2.75" (70.0mm)

Must be paired with channel

