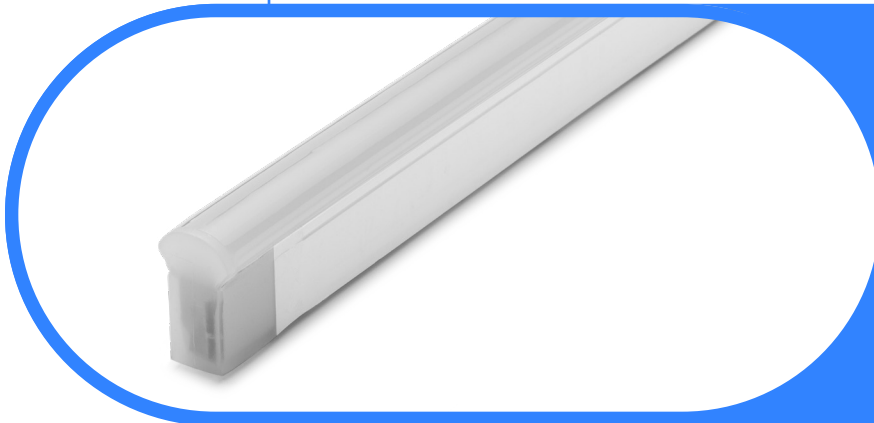




Complete Specification Sheet

Signwave 5 Static White

FLEXIBLE
NEON



Signwave 5 Static White

Wide View Flexible Lighting System



Specifications

Category	Flexible Neon
Series	Signwave 5
Family	Silicone
Watts per Foot	3.7 W
IP Rating	IP68
CRI	80+
CCT Options	2200K, 2700K, 3000K, 3500K, 4000K, 5700K
Input Voltage	24V
Width	0.45in (11.5mm)
Height	1.14in (29.0mm)
Production Intervals (in)	3.28in (83.33mm)
Max Run Length ²	26ft (7.9m)
Feed Orientation	Bottom Feed, End Feed, Side Right, Side Left
Cable Details	2 Conductor Leader Cable; 2 x 18AWG
Material	Silicone
Bend Diameter	Horizontal: 4.75in (120mm)
Bend Direction	Horizontal
Beam Angle	142°
Lumens per Foot	128 lm/ft
Viewing Angle	Wide
Life Expectancy	50,000 Hour Life Expectancy
Operating Temp.	-40°F (-40°C) to 131°F (55°C)
Dimming Options ¹	PWM, Triac, 0-10V, DMX, Hi-lume

Features

- Dimmable
- 50,000 Hour Life Expectancy
- Domed Profile for Large Beam Angle
- IP68
- UL-Listed for Indoor and Outdoor Use
- Factory-Installed Power Feed
- Injection-Molded Flush End Caps
- For Use with 24V Power Supplies

Description

High brightness, a wide viewing angle, and multiple configurations make Signwave 5 our best seller. Offered in 2200K, 2700K, 3000K, 3500K, 4000K, 5700K, this series tackles projects with fluid, seamless connections.

¹Specific dimming protocol dependent upon driver compatibility.

²To mitigate risks associated with thermal expansion and contraction, outdoor applications are limited to 9ft fixture lengths.

Kelvix reserves the right to update the product specifications at any time. Field modifications will void UL listing and warranty. Conforms to ANSI/UL Standard 2108. Certified to CAN/CSA Standard C22.2 No. 250.2 5% tolerance for all listed data

Fixture Type _____

Project Name _____

Location _____



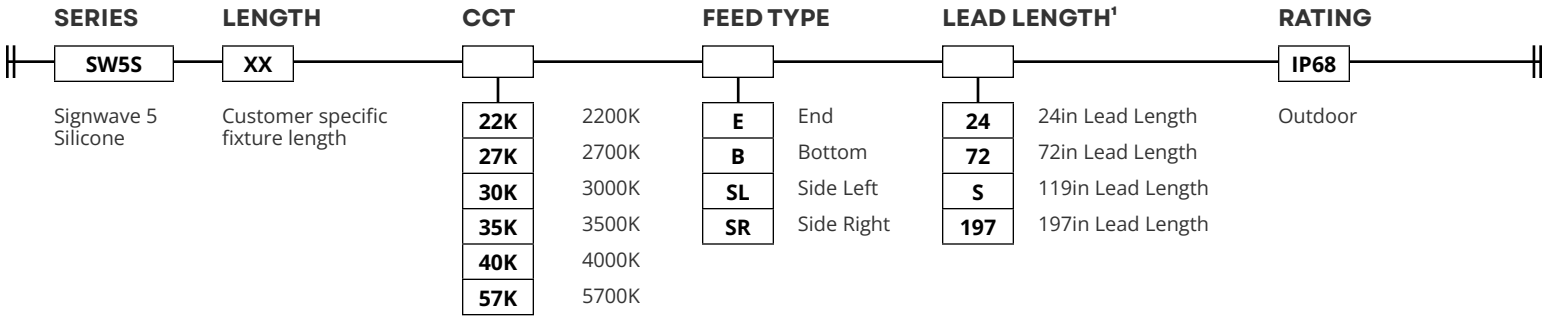
Product Code Builder

Signwave 5 Static White

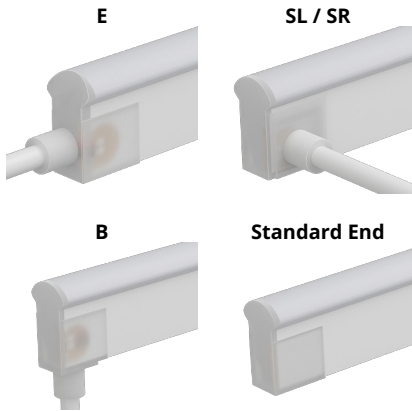
FLEXIBLE
NEON

Product Code Builder

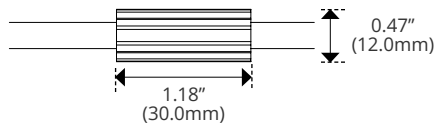
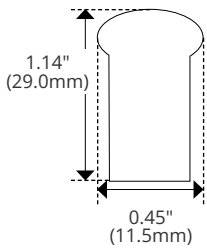
Example: SW5S-36-27K-B-S-IP68



FEED TYPE



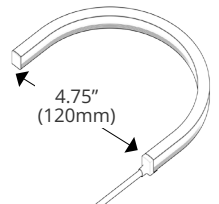
Dimensions



DryWire ferrule located 4.53" (± 0.39 ") from the cable connector. Protects against damage from water ingress inside cable wire. Please note that any attempt to remove the anti-wicking ferrule will result in the voiding of the warranty.

Bend Direction

Horizontal Bend Diameter



¹Consult Kelvix for custom lengths

Kelvix reserves the right to update the product specifications at any time. Field modifications will void UL listing and warranty. Conforms to ANSI/UL Standard 2108. Certified to CAN/CSA Standard C22.2 No. 250.2 5% tolerance for all listed data

Fixture Type _____

Project Name _____

Location _____



End Feed Options

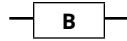
Signwave 5, 7

IMAGE

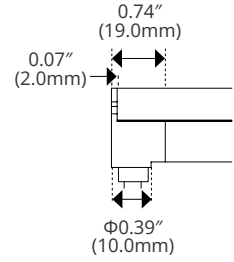
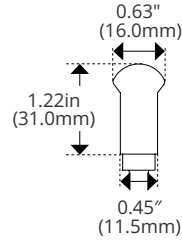
SPECIFICATIONS

DIMENSIONS

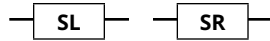
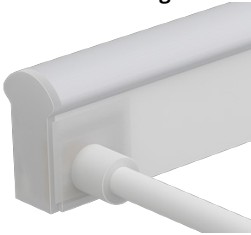
Bottom Feed



Width	0.63" (16.0mm)
Height	1.22" (31.0mm)

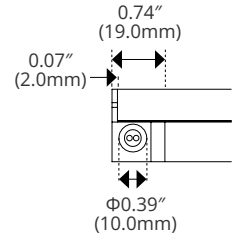
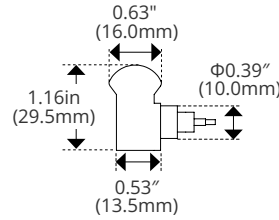


Side Left/Right

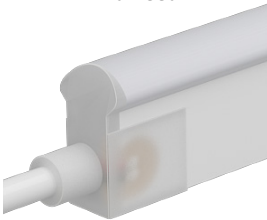


Width	0.63" (16.0mm)
Height	1.16" (29.5mm)

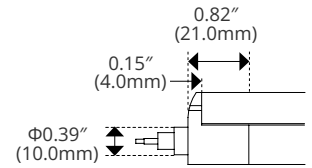
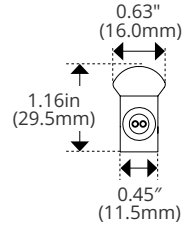
(SR Shown)



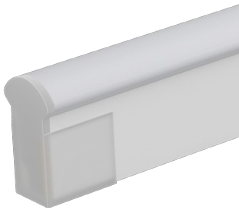
End Feed



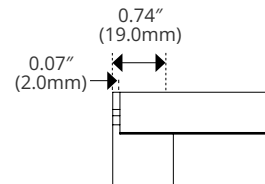
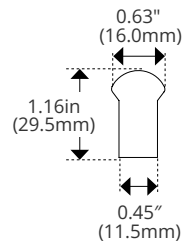
Width	0.63" (16.0mm)
Height	1.16" (29.5mm)



Standard End



Width	0.63" (16.0mm)
Height	1.16" (29.5mm)



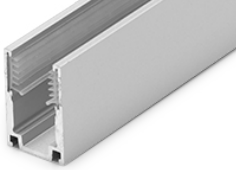


Mounting Options

Signwave 4, 5, 7

IMAGE

Serrated Channel

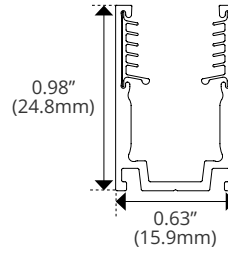


SPECIFICATIONS

SW-E-AL-CH-SR-2M

Material	Aluminum
Length	78.75in (2m)
Width	0.63in (15.9mm)
Height	0.98in (24.8mm)

DIMENSIONS

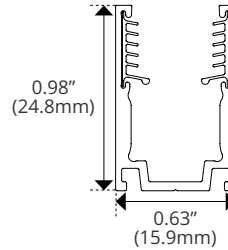


Serrated Clip

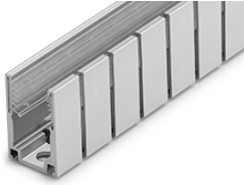


SW-E-CLP-AL-SR

Material	Aluminum
Length	0.79in (20.0mm)
Width	0.63in (15.9mm)
Height	0.98in (24.8mm)

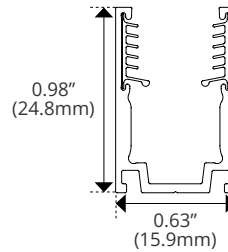


Horizontal Flex Channel



SW-E-CH-AL-FLX-1M

Material	Aluminum
Length	39.37in (1m)
Width	0.63in (15.9mm)
Height	0.98in (24.8mm)
Bend Direction	Horizontal

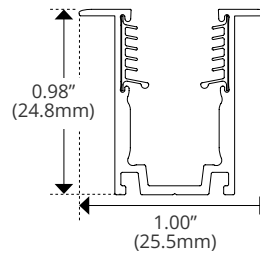


Recessed Channel



SW-E-AL-CH-SR-RC-2M

Material	Aluminum
Length	78.75in (2m)
Width	1.00in (25.5mm)
Height	0.98in (24.8mm)

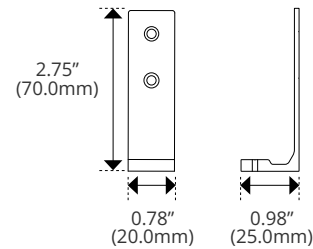


Side Mounting Clip



SW-CLP-RA

Material	Aluminum
Length	0.78in (20.0mm)
Width	0.98in (25.0mm)
Height	2.75in (70.0mm)



Must be paired with an above channel

Kelvix reserves the right to update the product specifications at any time. Field modifications will void UL listing and warranty. Conforms to ANSI/UL Standard 2108. Certified to CAN/CSA Standard C22.2 No. 250.2 5% tolerance for all listed data

Fixture Type _____

Project Name _____

Location _____



Pivot Clip Details

Signwave Series

IMAGE

Rotary Mounting Clip



SPECIFICATIONS



Material	Stainless Steel
Length	1.77in (45.00mm)
Width	0.98in (25.00mm)
Height	1.57in (40.00mm)

Must be paired with an above channel

DIMENSIONS

