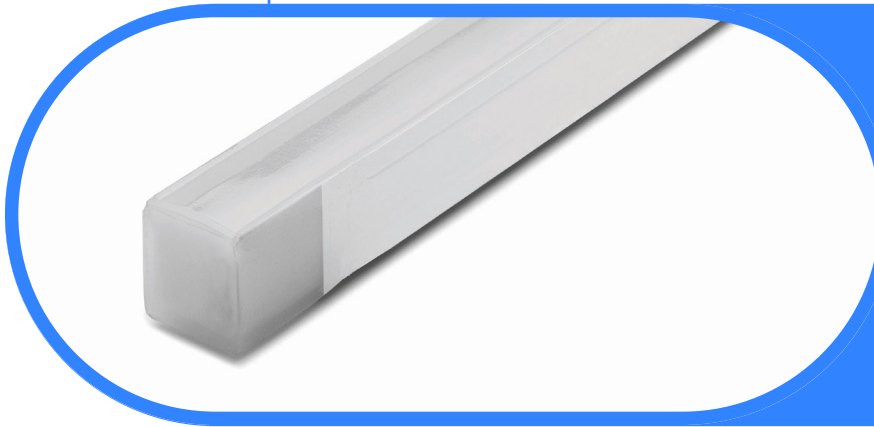




Complete Specification Sheet

Signwave 3 Static White

FLEXIBLE
NEON



Signwave 3 Static White

Narrow View Flexible Lighting System



Specifications

Category	Flexible Neon
Series	Signwave 3
Family	Static White
Watts per Foot	3.7W
IP Rating	IP68
CRI	80+
CCT Options	2200K, 2700K, 3000K, 3500K, 4000K, 5700K
Input Voltage	24V
Width	0.62in (16.0mm)
Height	0.66in (17.0mm)
Production Intervals (in)	2.19in (55.56mm)
Max Run Length²	26ft (7.9m)
Feed Orientation	Bottom Feed, End Feed, Side Right, Side Left
Cable Details	2 Conductor Leader Cable; 2 x 18AWG
Material	Silicone
Bend Diameter	V/H: 11.81in (300mm)
Bend Direction	Horizontal or Vertical
Beam Angle	112°
Lumens per Foot	143 lm/ft (Static White)
Viewing Angle	Narrow
Life Expectancy	50,000 Hour Life Expectancy
Operating Temp.	-40°F (-40°C) to 131°F (55°C)
Dimming Options¹	PWM, Triac, 0-10V, DMX, Hi-lume

¹Specific dimming protocol dependent upon driver compatibility.

²To mitigate risks associated with thermal expansion and contraction, outdoor applications are limited to 9ft fixture lengths.

Features

- Dimmable
- 50,000 Hour Life Expectancy
- Flat Profile for Streamline Projects
- Horizontal or Vertical Bending Option
- IP68
- UL-Listed for Indoor and Outdoor Use
- Factory-Installed Power Feed
- Injection-Molded Flush End Caps
- For Use with 24V Power Supplies

Description

Signwave 3 is the only series offered with Horizontal or Vertical bending options. The perfectly flat top of Signwave 3 provides greatly reduced side-viewing angles and concentrates the incredibly bright illumination onto a single direct-view surface.

Kelvix reserves the right to update the product specifications at any time. Field modifications will void UL listing and warranty. Conforms to ANSI/UL Standard 2108. Certified to CAN/CSA Standard C22.2 No. 250.2 5% tolerance for all listed data

Fixture Type _____

Project Name _____

Location _____



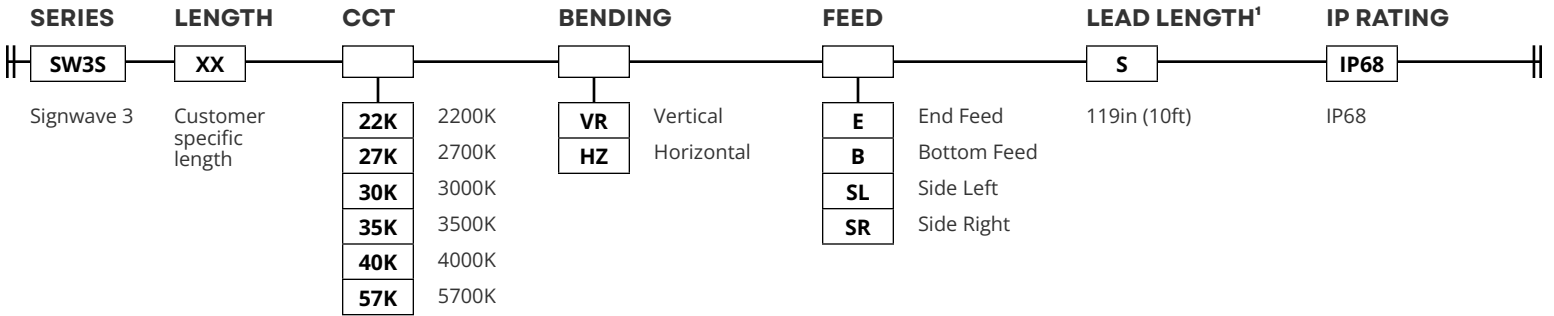
Product Code Builder

Signwave 3 Static White

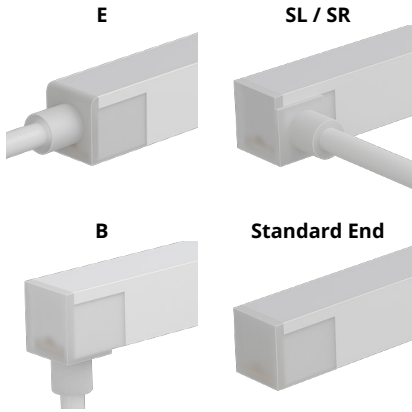
FLEXIBLE
NEON

Product Code Builder

Example: SWS3-36-27K-VR-B-S-IP68

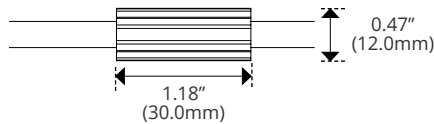
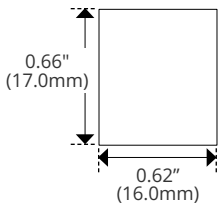


FEED TYPE



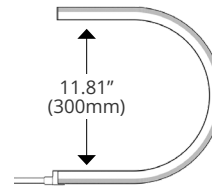
Product Details

DIMENSIONS

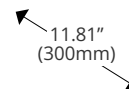


DryWire ferrule located 4.53" (±0.39") from the cable connector. Protects against damage from water ingress inside cable wire. Please note that any attempt to remove the anti-wicking ferrule will result in the voiding of the warranty.

BEND DIRECTION



Vertical Bend Diameter



Horizontal Bend Diameter

¹Consult Kelvix for custom lengths

Kelvix reserves the right to update the product specifications at any time. Field modifications will void UL listing and warranty. Conforms to ANSI/UL Standard 2108. Certified to CAN/CSA Standard C22.2 No. 250.2 5% tolerance for all listed data

Fixture Type _____

Project Name _____

Location _____



End Feed Options

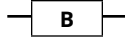
Signwave 3 Series

IMAGE

Bottom Feed

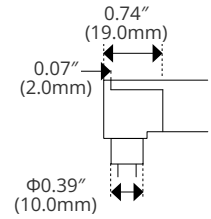
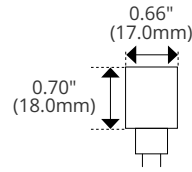


SPECIFICATIONS

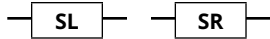


Width	0.66in (17.0mm)
Height	0.70in (18.0mm)

DIMENSIONS

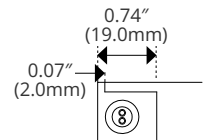
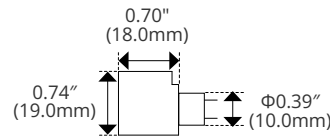


Side Left/Right

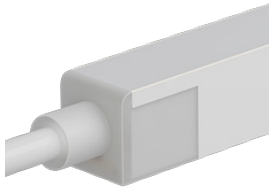


Width	0.70in (18.0mm)
Height	0.74" (19.0mm)

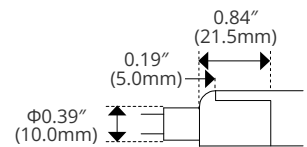
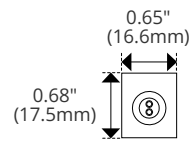
(SR Shown)



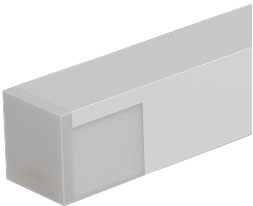
End Feed



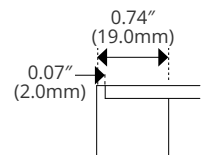
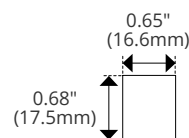
Width	0.65in (16.6mm)
Height	0.68in (17.5mm)



Standard End



Width	0.65in (16.6mm)
Height	0.68in (17.5mm)



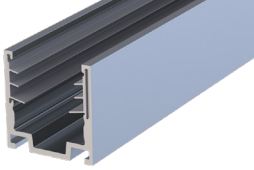


Metal Mounting Options

Signwave 3 Series

IMAGE

Serrated Channel

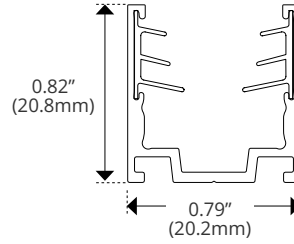


SPECIFICATIONS

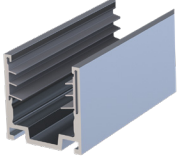
SW-K-AL-CH-SR-2M

Material	Aluminum
Length	78.75in (2m)
Width	0.79in (20.2mm)
Height	0.82in (20.8mm)

DIMENSIONS

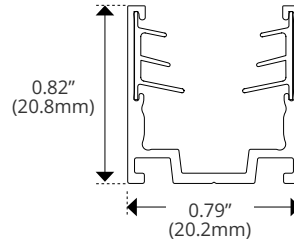


Serrated Clip

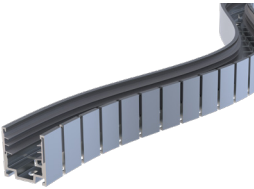


SW-K-CLP-AL-SR

Material	Aluminum
Length	0.78in (20.0mm)
Width	0.79in (20.2mm)
Height	0.82in (20.8mm)

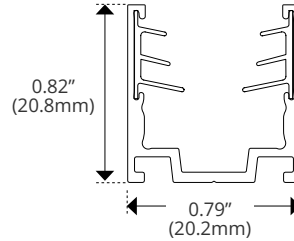


Horizontal Flex Channel

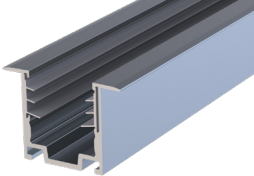


SW-K-CH-AL-FLX-1M

Material	Aluminum
Length	39.37in (1m)
Width	0.79in (20.2mm)
Height	0.82in (20.8mm)
Bend Direction	Horizontal

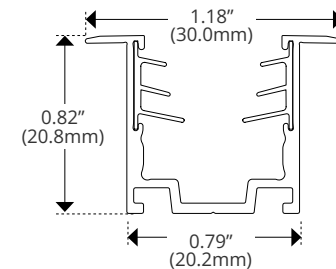


Recessed Channel



SW-K-AL-CH-SR-RC-2M

Material	Aluminum
Length	78.75in (2m)
Width	1.18in (30mm)
Height	0.82in (20.8mm)

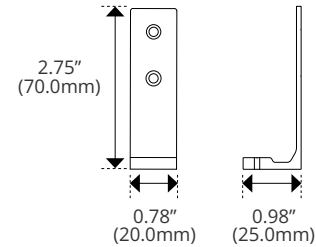


Side Mounting Clip



SW-CLP-RA

Material	Aluminum
Length	0.78in (20.0mm)
Width	0.98in (25.0mm)
Height	2.75in (70.0mm)



Must be paired with an above channel

Kelvix reserves the right to update the product specifications at any time. Field modifications will void UL listing and warranty. Conforms to ANSI/UL Standard 2108. Certified to CAN/CSA Standard C22.2 No. 250.2 5% tolerance for all listed data

Fixture Type _____

Project Name _____

Location _____

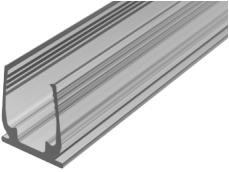


Plastic Mounting Options

Signwave 3 Series

IMAGE

Plastic Channel

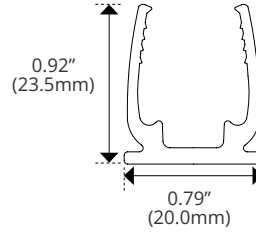


SPECIFICATIONS

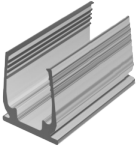
SW-K-CH-PL-2M

Material	Plastic
Length	78.75in (2m)
Width	0.79in (20.0mm)
Height	0.92in (23.5mm)

DIMENSIONS

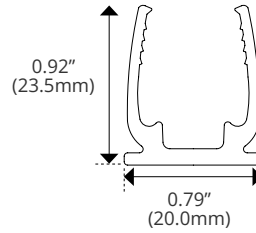


Plastic Clip



SW-K-CLP-PL

Material	Plastic
Length	1.38in (35.0mm)
Width	0.79in (20.0mm)
Height	0.92in (23.5mm)





Pivot Clip Details

Signwave Series

IMAGE

Rotary Mounting Clip



SPECIFICATIONS



Material	Stainless Steel
Length	1.77in (45.00mm)
Width	0.98in (25.00mm)
Height	1.57in (40.00mm)

Must be paired with an above channel

DIMENSIONS

