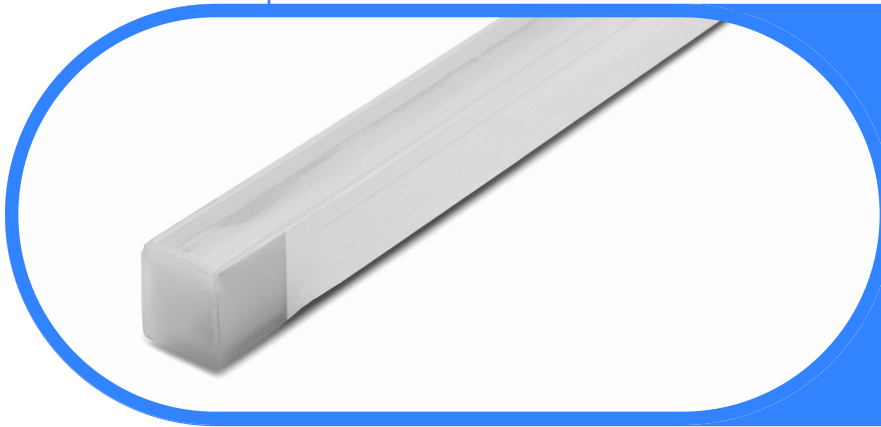




Complete Specification Sheet

Signwave 3 Sauna Static White

FLEXIBLE
NEON



Signwave 3 Sauna Static White

Narrow View Flexible Lighting System



Specifications

| | |
|------------------------------------|--|
| Category | Flexible Neon |
| Series | Signwave 3 Sauna |
| Family | Static White |
| Watts per Foot | 1.82W |
| IP Rating | IP67 |
| CRI | 80+ |
| CCT Options | 2200K, 2700K, 3000K, 3500K, 4000K, 5700K |
| Input Voltage | 24V |
| Width | 0.63in (16.0mm) |
| Height | 0.67in (17.0mm) |
| Production Intervals (in) | 2.19in (55.56mm) |
| Max Run Length² | 32.8ft (10m) |
| Feed Orientation | Bottom Feed, End Feed, Side Right, Side Left |
| Cable Details | 2 Conductor Leader Cable; 2 x 18AWG |
| Material | Silicone |
| Bend Diameter | V/H: 11.81in (300mm) |
| Bend Direction | Horizontal or Vertical |
| Beam Angle | 113.2° |
| Lumens per Foot | 70 - 101 lm/ft |
| Viewing Angle | Narrow |
| Life Expectancy | 50,000 Hour Life Expectancy |
| Warranty | 3 Years |
| Operating Temp. | -40°F (-40°C) to 203°F (95°C) |
| Dimming Options¹ | PWM, Triac, 0-10V, DMX, Hi-lume |

Features

- Dimmable
- 50,000 Hour Life Expectancy
- Flat Profile for Streamline Projects
- Horizontal or Vertical Bending Option
- IP67
- UL-Listed for Indoor and Outdoor Use
- Factory-Installed Power Feed
- Injection-Molded Flush End Caps
- For Use with 24V Power Supplies

Description

This special high temperature Signwave 3 Sauna offers Horizontal or Vertical bending with a narrow viewing angle, and multiple configurations. Offered in 2200K, 2700K, 3000K, 3500K, 4000K, 5700K, our Signwave series tackles project lighting with fluid, seamless connections.

¹Specific dimming protocol dependent upon driver compatibility.

²To mitigate risks associated with thermal expansion and contraction, outdoor applications are limited to 9ft fixture lengths.

Kelvix reserves the right to update the product specifications at any time. Field modifications will void UL listing and warranty. Conforms to ANSI/UL Standard 2108. Certified to CAN/CSA Standard C22.2 No. 250.2 5% tolerance for all listed data

Fixture Type _____

Project Name _____

Location _____



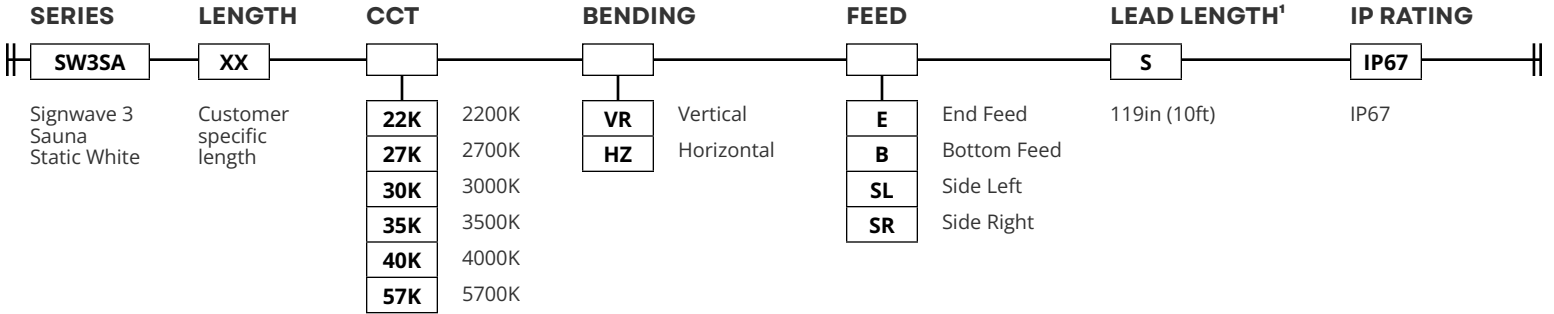
Product Code Builder

Signwave 3 Sauna Static White

FLEXIBLE
NEON

Product Code Builder

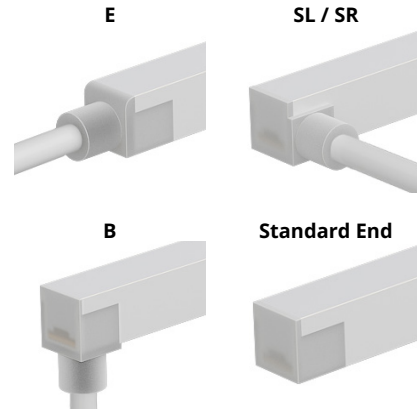
Example: SW3SA-30-22K-VR-E-S-IP67



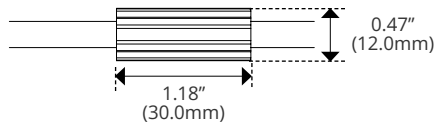
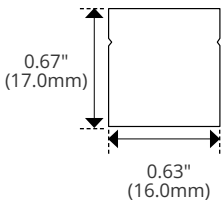
CCT

| CCT | 2200K | 2700K | 3000K | 3500K | 4000K | 5700K |
|---------------|-------|-------|-------|-------|-------|-------|
| Lumens | 100 | 106 | 106 | 106 | 106 | 106 |

FEED TYPE



Dimensions

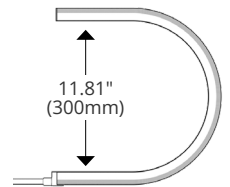


DryWire ferrule located 4.53" (±0.39") from the cable connector. Protects against damage from water ingress inside cable wire. Please note that any attempt to remove the anti-wicking ferrule will result in the voiding of the warranty.

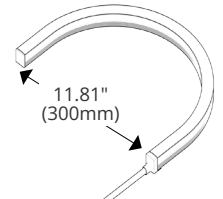
¹Consult Kelvix for custom lengths

Bend Direction

Vertical Bend Diameter



Horizontal Bend Diameter



Kelvix reserves the right to update the product specifications at any time. Field modifications will void UL listing and warranty. Conforms to ANSI/UL Standard 2108. Certified to CAN/CSA Standard C22.2 No. 250.2 5% tolerance for all listed data

Fixture Type _____

Project Name _____

Location _____



End Feed Options

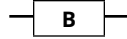
Signwave 3 Sauna Series

IMAGE

Bottom Feed

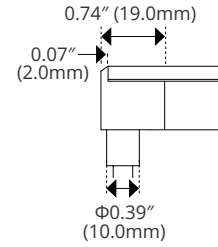
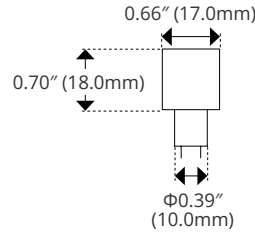


SPECIFICATIONS

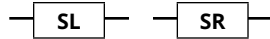
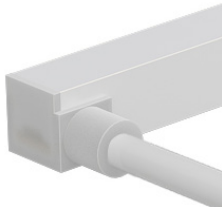


| | |
|---------------|-----------------|
| Width | 0.66in (17.0mm) |
| Height | 0.70in (18.0mm) |

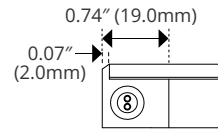
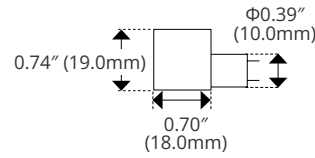
DIMENSIONS



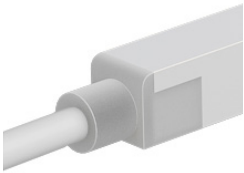
Side Left/Right



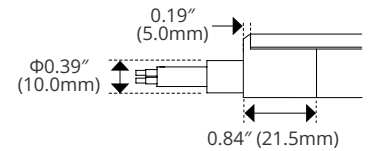
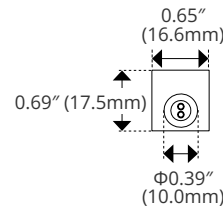
| | |
|---------------|---------------|
| Width | 0.43in (11mm) |
| Height | 0.43in (11mm) |



End Feed



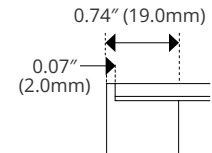
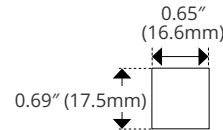
| | |
|---------------|-----------------|
| Width | 0.43in (11mm) |
| Height | 0.41in (10.5mm) |



Standard End



| | |
|---------------|-----------------|
| Width | 0.43in (11mm) |
| Height | 0.41in (10.5mm) |



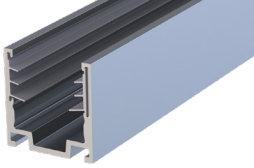


Mounting Options

Signwave 3 Sauna Series

IMAGE

Serrated Channel

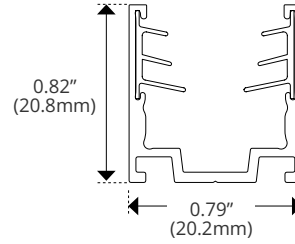


SPECIFICATIONS

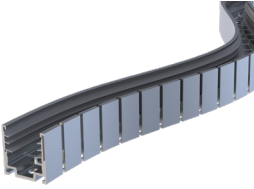
SW-K-AL-CH-SR-2M

| | |
|-----------------|-----------------|
| Material | Aluminum |
| Length | 78.75in (2m) |
| Width | 0.79in (20.2mm) |
| Height | 0.82in (20.8mm) |

DIMENSIONS

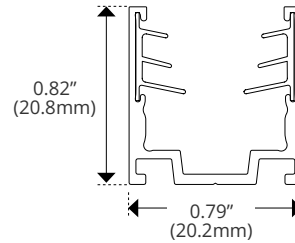


Horizontal Flex Channel

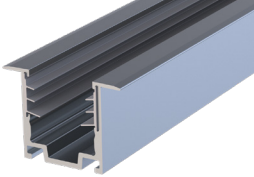


SW-K-CH-AL-FLX-1M

| | |
|-----------------------|-----------------|
| Material | Aluminum |
| Length | 39.37in (1m) |
| Width | 0.79in (20.2mm) |
| Height | 0.82in (20.8mm) |
| Bend Direction | Horizontal |

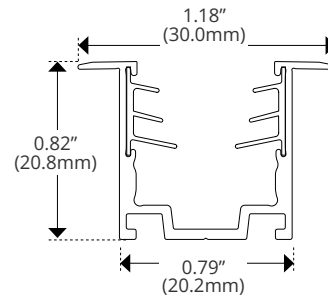


Recessed Channel



SW-K-AL-CH-SR-RC-2M

| | |
|-----------------|-----------------|
| Material | Aluminum |
| Length | 78.75in (2m) |
| Width | 0.79in (20.2mm) |
| Height | 0.82in (20.8mm) |





Pivot Clip Details

Signwave Series

IMAGE

Rotary Mounting Clip



SPECIFICATIONS



| | |
|-----------------|------------------|
| Material | Stainless Steel |
| Length | 1.77in (45.00mm) |
| Width | 0.98in (25.00mm) |
| Height | 1.57in (40.00mm) |

Must be paired with an above channel

DIMENSIONS

