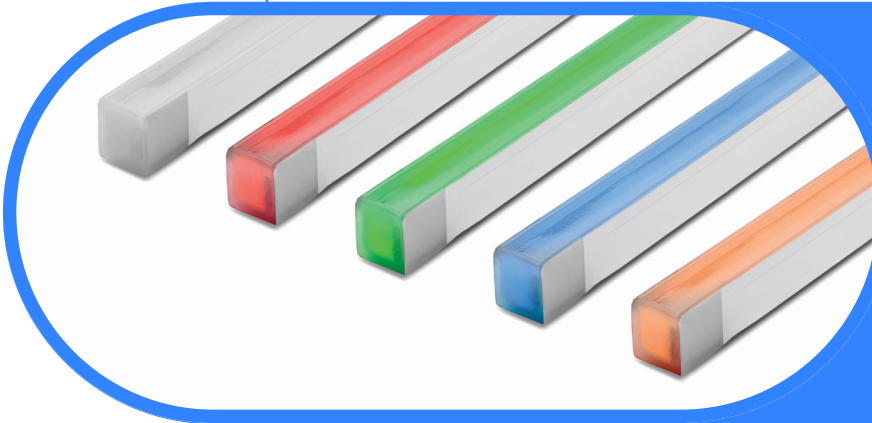




Complete Specification Sheet

Signwave 3 PSF Static Color

FLEXIBLE
NEON



Signwave 3 PSF Static Color

Narrow View, UL676, Pool, Spa, and Fountain Rated



Specifications

Category	Flexible Neon
Series	Signwave 3 PSF
Family	Static Color
Watts per Foot	Red, Amber: 2.4W, Green, Blue: 3.7W
IP Rating	IP68
CCT Options	Red, Green, Blue, Amber
Input Voltage	24V
Width	0.62in (16.0mm)
Height	0.67in (17.0mm)
Production Intervals (in)	Red, Amber: 3.28in (83.33mm), Green, Blue: 2.19in (55.56mm)
Max Run Length²	Red, Amber: 38ft (11.6m), Green, Blue: 26ft (7.9m)
Feed Orientation	Bottom Feed, End Feed, Side Right, Side Left
Cable Details	2 Conductor Leader Cable; 2 x 18AWG
Material	Silicone
Bend Diameter	V/H: 11.81in (300mm)
Bend Direction	Horizontal or Vertical
Beam Angle	114°
Lumens per Foot	143 lm/ft (Static White)
Viewing Angle	Narrow
Life Expectancy	50,000 Hour Life Expectancy
Operating Temp.	-40°F (-40°C) to 131°F (55°C)
Water Temp.	Not to exceed 35°C (95°F)
Dimming Options¹	PWM, Triac, 0-10V, DMX, Hi-lume

¹Specific dimming protocol dependent upon driver compatibility.

²To mitigate risks associated with thermal expansion and contraction, outdoor applications are limited to 9ft fixture lengths.

Features

- Dimmable
- 50,000 Hour Life Expectancy
- Salt Water Safe
- Flat Profile for Streamline Projects
- Horizontal or Vertical Bending Option
- IP68 Permanent Installation Underwater up to 16.4ft (5m)
- UL676 Listed for Pool, Spa, and Fountain
- Factory-Installed Power Feed
- For Use with 24V Power Supplies

Description

Signwave 3 is the only series offered with Horizontal or Vertical bending options. The perfectly flat top of Signwave 3 provides greatly reduced side-viewing angles and concentrates the incredibly bright illumination onto a single direct-view surface.

Kelvix reserves the right to update the product specifications at any time. Field modifications will void UL listing and warranty. Conforms to ANSI/UL Standard 676. 5% tolerance for all listed data

Fixture Type _____

Project Name _____

Location _____



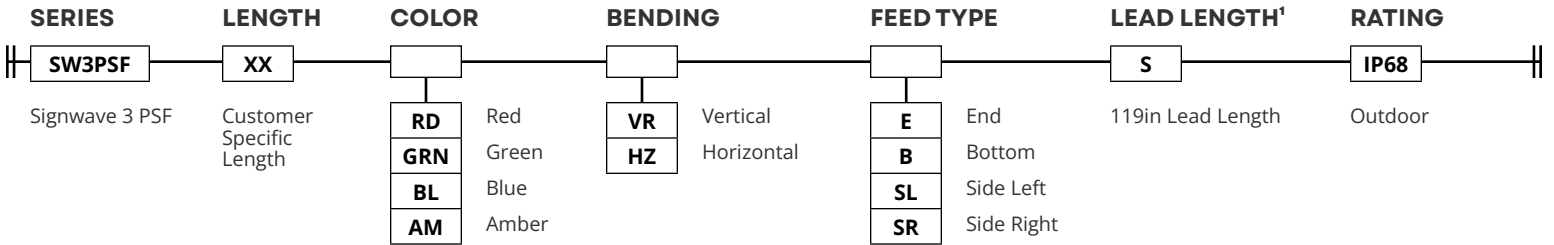
Product Code Builder

Signwave 3 PSF Static Color

FLEXIBLE
NEON

Product Code Builder

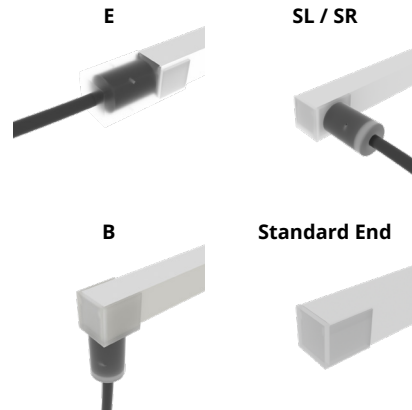
Example: SW3PSF-36-RD-VR-B-S-IP68



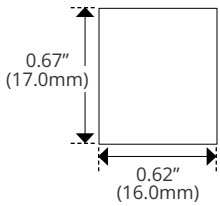
COLOR

	Red	Green	Blue	Amber
Wavelength (nm)	620-630	520-530	465-475	585-595

FEED TYPE

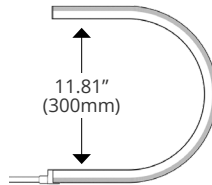


Dimensions

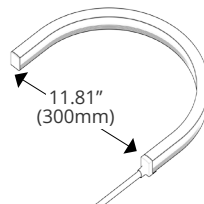


Bend Direction

Vertical Bend Diameter



Horizontal Bend Diameter



Chemical Limits

Free Chlorine	≤2PPM
Ozone	≤0.3PPM
Salt	≤4%

Fixture damage due to chemical environment will not be covered under warranty.

¹Consult Kelvix for custom lengths, 119 inch minimum length

Kelvix reserves the right to update the product specifications at any time. Field modifications will void UL listing and warranty. Conforms to ANSI/UL Standard 676.

5% tolerance for all listed data

Fixture Type _____

Project Name _____

Location _____



End Feed Options

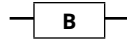
Signwave 3 PSF Series

IMAGE

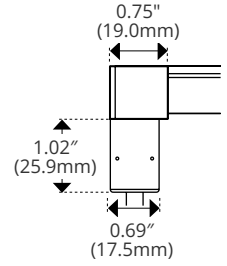
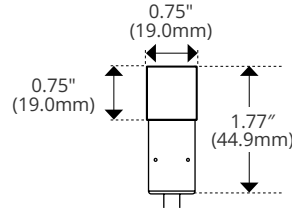
SPECIFICATIONS

DIMENSIONS

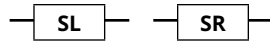
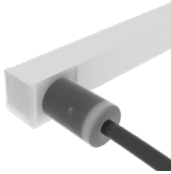
Bottom Feed



Width	0.75in (19.0mm)
Height	1.77in (45mm)

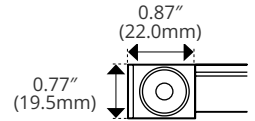
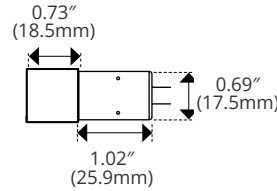


Side Left/Right

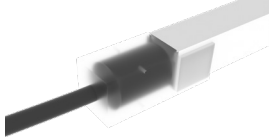


Width	1.75in (44.5mm)
Height	0.77in (19.5mm)

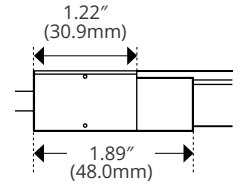
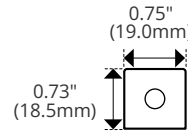
(SR Shown)



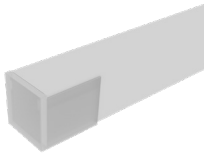
End Feed



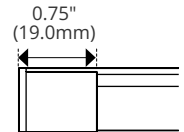
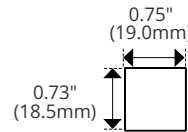
Width	0.75in (19.0mm)
Height	0.73in (18.5mm)



Standard End



Width	0.62" (15.7mm)
Height	0.66" (16.7mm)



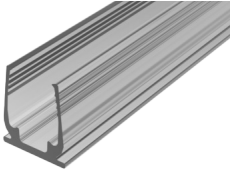


Mounting and Power Options

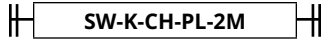
Signwave 3 PSF Series

IMAGE

Plastic Channel

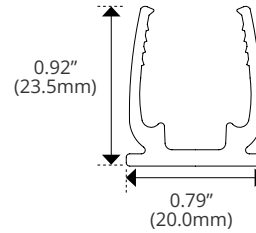


SPECIFICATIONS

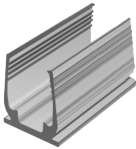


Material	Plastic
Length	78.75in (2m)
Width	0.79in (20.0mm)
Height	0.92in (23.5mm)

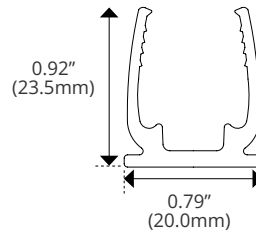
DIMENSIONS



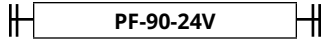
Plastic Clip



Material	Plastic
Length	1.38in (35.0mm)
Width	0.79in (20.0mm)
Height	0.92in (23.5mm)



Power Supply



Input Voltage	120V AC, 60Hz
Output Voltage	24V DC
Max Wattage	92W
Length	12.19\" (310.0mm)
Width	5.88\" (150.0mm)
Height	3.94\" (100.0mm)

- Power Supply for Plug-in-Pool System
- 24V DC Safety Power Supply
- Product must be Derated per NEC
- ON/OFF Switch and Breaker on Front Panel
- For Use with Kelvix Signwave® 3 PSF