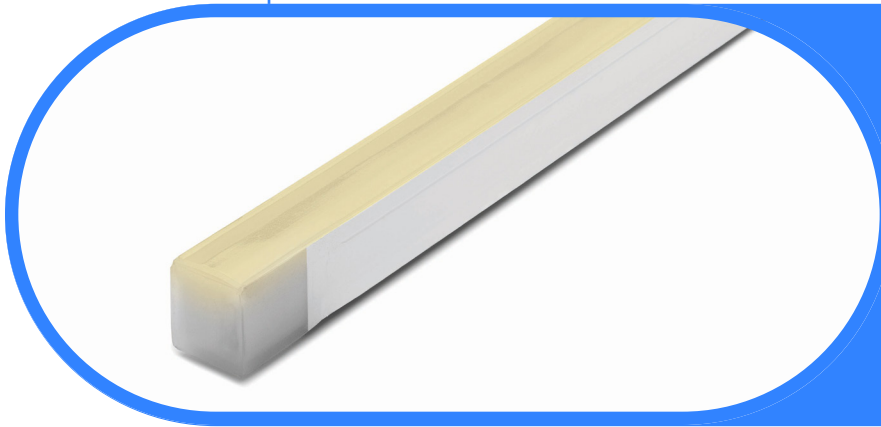




Complete Specification Sheet

Signwave 3 PSF Color Tuning

FLEXIBLE
NEON



Signwave 3 PSF Color Tuning

Narrow View, UL676, Pool, Spa, and Fountain Rated



Specifications

| | |
|------------------------------------|--|
| Category | Flexible Neon |
| Series | Signwave 3 PSF |
| Family | Color Tuning |
| Watts per Foot | 3.7W |
| IP Rating | IP68 |
| CRI | 80+ |
| CCT Options | 2200K - 5700K |
| Input Voltage | 24V |
| Width | 0.62in (16.0mm) |
| Height | 0.67in (17.0mm) |
| Production Intervals (in) | 3.28in (83.33mm) |
| Max Run Length² | 22ft (6.7m) |
| Feed Orientation | Bottom Feed, End Feed, Side Right, Side Left |
| Cable Details | 3 Conductor Leader Cable; 3 x 18AWG |
| Material | Silicone |
| Bend Diameter | V/H: 11.81in (300mm) |
| Bend Direction | Horizontal or Vertical |
| Beam Angle | 114° |
| Lumens per Foot | 143 lm/ft (Static White) |
| Viewing Angle | Narrow |
| Life Expectancy | 50,000 Hour Life Expectancy |
| Operating Temp. | -40°F (-40°C) to 131°F (55°C) |
| Dimming Options¹ | PWM, Triac, 0-10V, DMX, Hi-lume |

Features

- Dimmable
- 50,000 Hour Life Expectancy
- Salt Water Safe
- Flat Profile for Streamline Projects
- Horizontal or Vertical Bending Option
- IP68 Permanent Installation Underwater up to 16.4ft (5m)
- UL676 Listed for Pool, Spa, and Fountain
- Factory-Installed Power Feed
- For Use with 24V Power Supplies

Description

Signwave 3 is the only series offered with Horizontal or Vertical bending options. The perfectly flat top of Signwave 3 provides greatly reduced side-viewing angles and concentrates the incredibly bright illumination onto a single direct-view surface.

¹Specific dimming protocol dependent upon driver compatibility.

²To mitigate risks associated with thermal expansion and contraction, outdoor applications are limited to 9ft fixture lengths.

Kelvix reserves the right to update the product specifications at any time. Field modifications will void UL listing and warranty. Conforms to ANSI/UL Standard 676.
5% tolerance for all listed data

Fixture Type _____

Project Name _____

Location _____



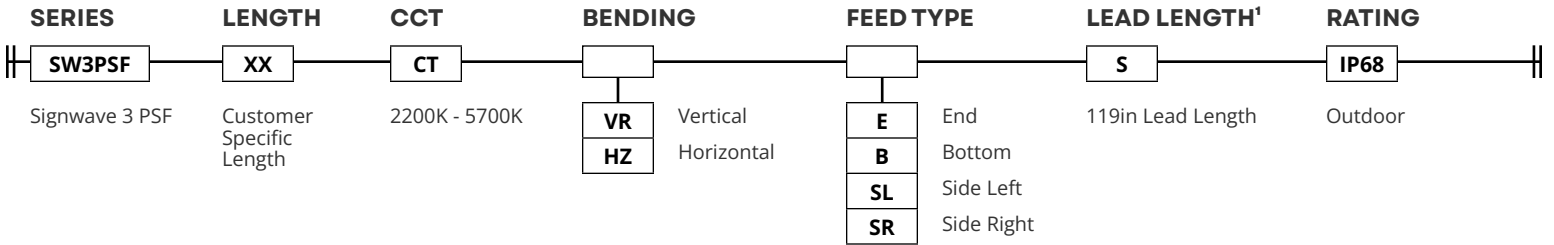
Product Code Builder

Signwave 3 PSF Color Tuning

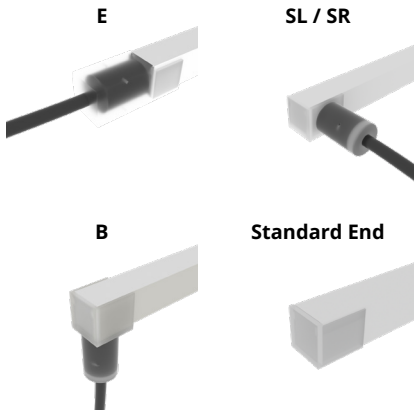
FLEXIBLE
NEON

Product Code Builder

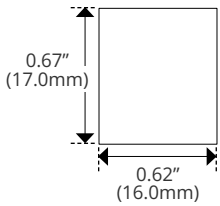
Example: SW3PSF-36-CT-VR-B-S-IP68



FEED TYPE

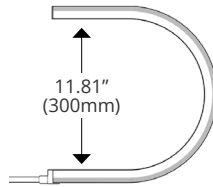


Dimensions

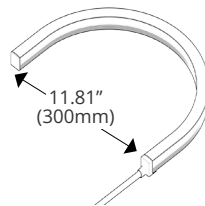


Bend Direction

Vertical Bend Diameter



Horizontal Bend Diameter



Chemical Limits

| | |
|----------------------|---------|
| Free Chlorine | ≤2PPM |
| Ozone | ≤0.3PPM |
| Salt | ≤4% |

Fixture damage due to chemical environment will not be covered under warranty.

¹Consult Kelvix for custom lengths, 119 inch minimum length

Kelvix reserves the right to update the product specifications at any time. Field modifications will void UL listing and warranty. Conforms to ANSI/UL Standard 676.

5% tolerance for all listed data

Fixture Type _____

Project Name _____

Location _____



End Feed Options

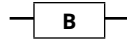
Signwave 3 PSF Series

IMAGE

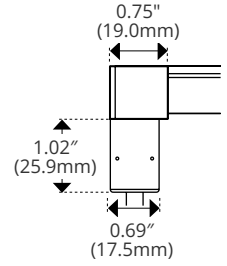
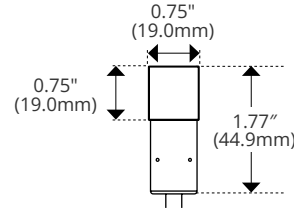
SPECIFICATIONS

DIMENSIONS

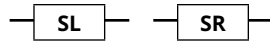
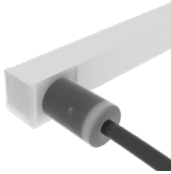
Bottom Feed



| | |
|---------------|-----------------|
| Width | 0.75in (19.0mm) |
| Height | 1.77in (45mm) |

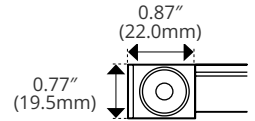
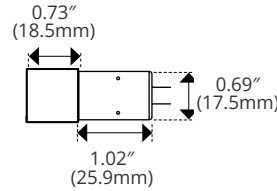


Side Left/Right

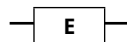
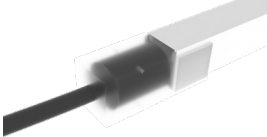


| | |
|---------------|-----------------|
| Width | 1.75in (44.5mm) |
| Height | 0.77in (19.5mm) |

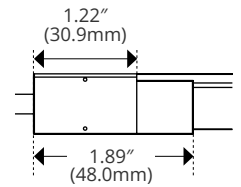
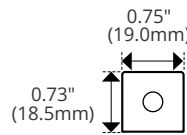
(SR Shown)



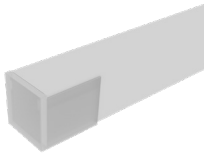
End Feed



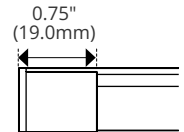
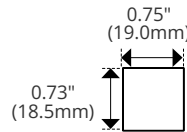
| | |
|---------------|-----------------|
| Width | 0.75in (19.0mm) |
| Height | 0.73in (18.5mm) |



Standard End



| | |
|---------------|----------------|
| Width | 0.62" (15.7mm) |
| Height | 0.66" (16.7mm) |



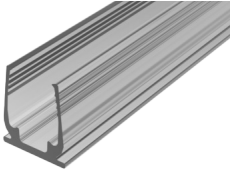


Mounting and Power Options

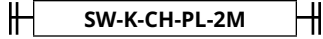
Signwave 3 PSF Series

IMAGE

Plastic Channel

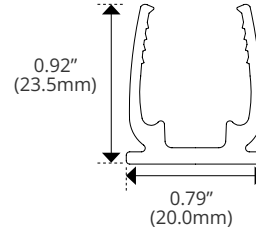


SPECIFICATIONS

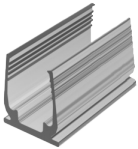


| | |
|-----------------|-----------------|
| Material | Plastic |
| Length | 78.75in (2m) |
| Width | 0.79in (20.0mm) |
| Height | 0.92in (23.5mm) |

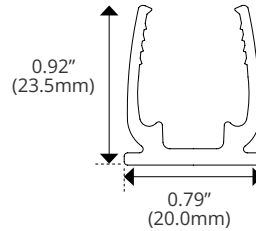
DIMENSIONS



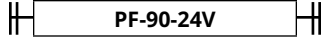
Plastic Clip



| | |
|-----------------|-----------------|
| Material | Plastic |
| Length | 1.38in (35.0mm) |
| Width | 0.79in (20.0mm) |
| Height | 0.92in (23.5mm) |



Power Supply



| | |
|-----------------------|------------------|
| Input Voltage | 120V AC, 60Hz |
| Output Voltage | 24V DC |
| Max Wattage | 92W |
| Length | 12.19" (310.0mm) |
| Width | 5.88" (150.0mm) |
| Height | 3.94" (100.0mm) |

- Power Supply for Plug-in-Pool System
- 24V DC Safety Power Supply
- Product must be Derated per NEC
- ON/OFF Switch and Breaker on Front Panel
- For Use with Kelvix Signwave® 3 PSF