



Complete Specification Sheet

Signwave 3 Mini Static White

FLEXIBLE
NEON



Signwave 3 Mini Static White

Narrow View Flexible Lighting System



Specifications

Category	Flexible Neon
Series	Signwave 3 Mini
Family	Static White
Watts per Foot	1.3W
IP Rating	IP67
CRI	80+
CCT Options	2200K, 2700K, 3000K, 3500K, 4000K, 5700K
Input Voltage	24V
Width	0.39in (10.0mm)
Height	0.39in (10.0mm)
Production Intervals (in)	3.28in (83.33mm)
Max Run Length²	49.2ft (15m)
Feed Orientation	Bottom Feed, End Feed, Side Right, Side Left
Cable Details	2 Conductor Leader Cable; 2 x 22AWG
Material	Silicone
Bend Diameter	V/H: 3.94in (100mm)
Bend Direction	Horizontal or Vertical
Beam Angle	111.6°
Lumens per Foot	73 - 85 lm/ft
Viewing Angle	Narrow
Life Expectancy	50,000 Hour Life Expectancy
Operating Temp.	-40°F (-40°C) to 149°F (65°C)
Dimming Options¹	PWM, Triac, 0-10V, DMX, Hi-lume

Features

- Dimmable
- 50,000 Hour Life Expectancy
- Flat Profile for Streamline Projects
- Horizontal or Vertical Bending Option
- IP67
- UL-Listed for Indoor and Outdoor Use
- Factory-Installed Power Feed
- Injection-Molded Flush End Caps
- For Use with 24V Power Supplies

Description

Signwave 3 Mini is the smallest version of our Signwave Series. It has both Horizontal and Vertical Bending options. The miniature flat top of Signwave 3 Mini provides an excellent option for accent lighting, with its small aperture and finely tuned light levels, offered in Static White 2200K, 2700K, 3000K, 3500K, 4000K, 5700K

¹Specific dimming protocol dependent upon driver compatibility.

²To mitigate risks associated with thermal expansion and contraction, outdoor applications are limited to 9ft fixture lengths.

Kelvix reserves the right to update the product specifications at any time. Field modifications will void UL listing and warranty. Conforms to ANSI/UL Standard 2108. Certified to CAN/CSA Standard C22.2 No. 250.2 5% tolerance for all listed data

Fixture Type _____

Project Name _____

Location _____



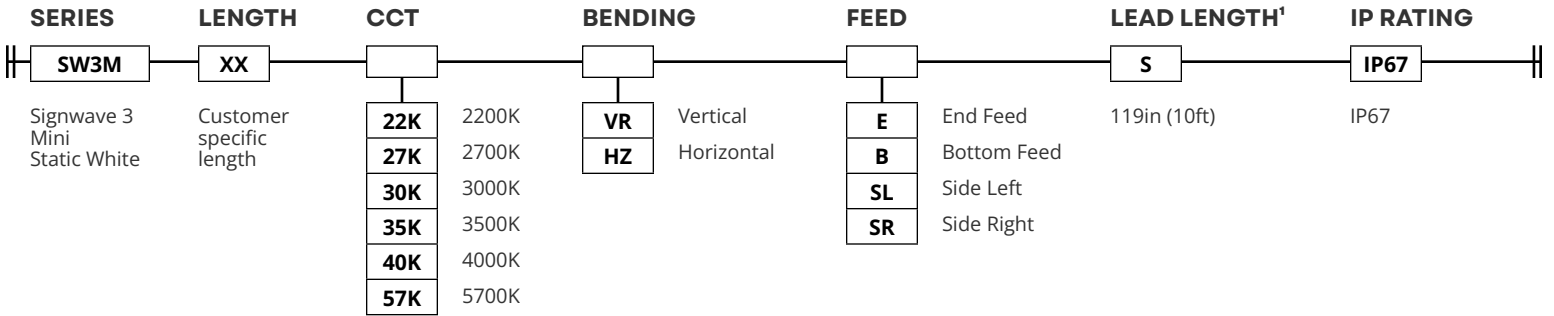
Product Code Builder

Signwave 3 Mini Static White

FLEXIBLE
NEON

Product Code Builder

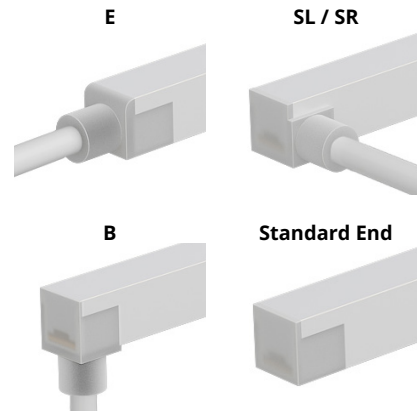
Example: SW3M



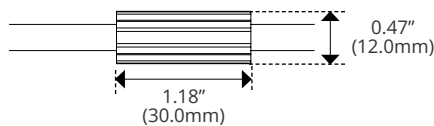
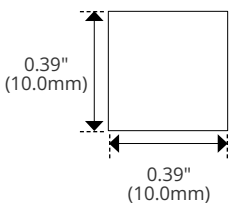
CCT

CCT	2200K	2700K	3000K	3500K	4000K	5700K
Lumens	73	76	78	80	83	85

FEED TYPE



Dimensions

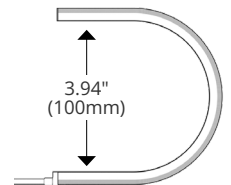


DryWire ferrule located 4.53" (± 0.39 ") from the cable connector. Protects against damage from water ingress inside cable wire. Please note that any attempt to remove the anti-wicking ferrule will result in the voiding of the warranty.

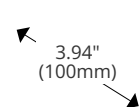
¹Consult Kelvix for custom lengths

Bend Direction

Vertical Bend Diameter



Horizontal Bend Diameter



Kelvix reserves the right to update the product specifications at any time. Field modifications will void UL listing and warranty. Conforms to ANSI/UL Standard 2108. Certified to CAN/CSA Standard C22.2 No. 250.2 5% tolerance for all listed data

Fixture Type _____

Project Name _____

Location _____



End Feed Options

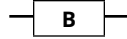
Signwave 3 Mini Series

IMAGE

Bottom Feed

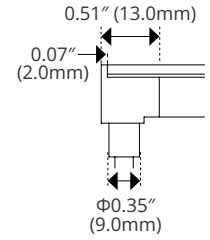
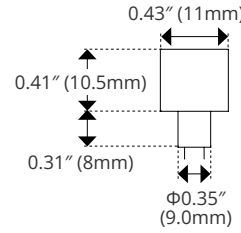


SPECIFICATIONS

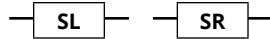
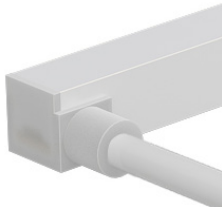


Width	0.43in (11mm)
Height	0.41in (10.5mm)

DIMENSIONS

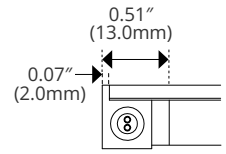
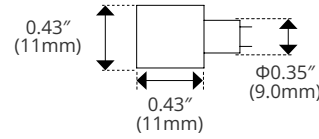


Side Left/Right

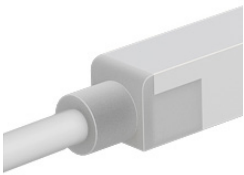


Width	0.43in (11mm)
Height	0.43in (11mm)

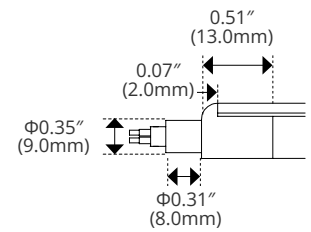
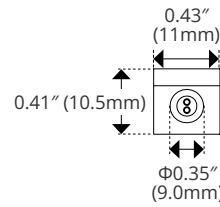
(SR Shown)



End Feed



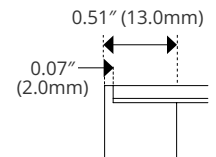
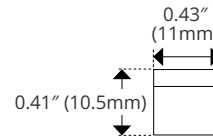
Width	0.43in (11mm)
Height	0.41in (10.5mm)



Standard End



Width	0.43in (11mm)
Height	0.41in (10.5mm)



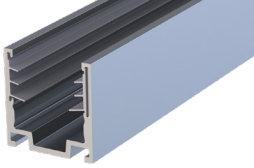


Mounting Options

Signwave 3 Mini Series

IMAGE

Serrated Channel

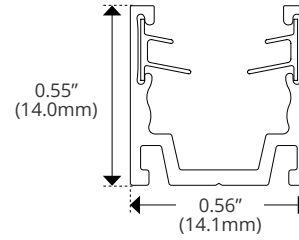


SPECIFICATIONS

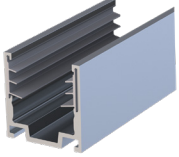
SW-M-AL-CH-SR-2M

Material	Aluminum
Length	78.75in (2m)
Width	0.56in (14.1mm)
Height	0.55in (14.0mm)

DIMENSIONS

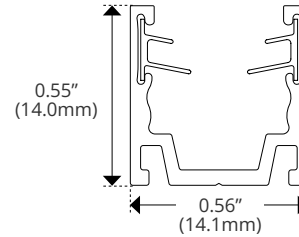


Serrated Clip

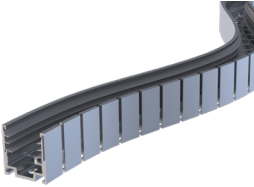


SW-M-CLP-AL-SR

Material	Aluminum
Length	0.79in (20.0mm)
Width	0.56in (14.1mm)
Height	0.55in (14.0mm)

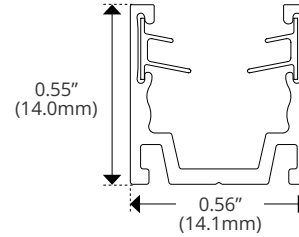


Horizontal Flex Channel

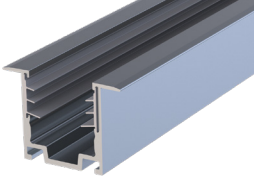


SW-M-CH-AL-FLX-1M

Material	Aluminum
Length	39.37in (1m)
Width	0.56in (14.1mm)
Height	0.55in (14.0mm)
Bend Direction	Horizontal

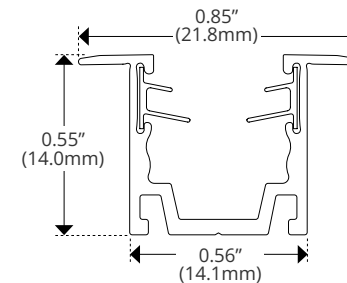


Recessed Channel



SW-M-AL-CH-SR-RC-2M

Material	Aluminum
Length	78.75in (2m)
Width	0.85in (21.8mm)
Height	0.55in (14.0mm)



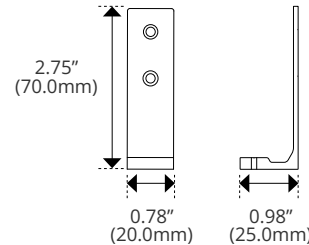
Side Mounting Clip



SW-CLP-RA

Material	Aluminum
Length	0.78in (20.0mm)
Width	0.98in (25.0mm)
Height	2.75in (70.0mm)

Must be paired with an above channel





Pivot Clip Details

Signwave Series

IMAGE

Rotary Mounting Clip



SPECIFICATIONS



Material	Stainless Steel
Length	1.77in (45.00mm)
Width	0.98in (25.00mm)
Height	1.57in (40.00mm)

Must be paired with an above channel

DIMENSIONS

