

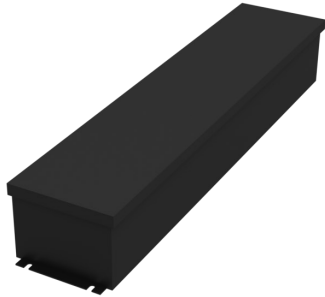


Complete Specification Sheet

SLV96

SLV96

96 Watt
24 Volt Non-Dim
Class 2 Power Supply



Specifications

Category	Power Supplies
Series	SLV
Family	96W
Input Voltage	100-277V AC
Output Voltage	24 DC Constant Voltage
Max Wattage	96W
Operating Temp.	-35°F(-37°C) - 158°F (70°C)
Dimming Options	None (Requires external secondary-side dimming device)

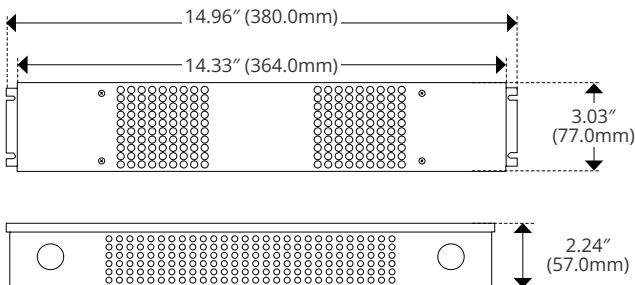
Features

- Non-Dimmable Driver
- Compatible with Color Changing and Pixel Systems
- Overload Protection/Auto Reset Short Circuit Protection
- Free Air Convection Cooling
- Suitable for Dry/Damp Location
- UL-Listed Class 2

Description

The SLV96 is a 96 Watt LED power supply designed for color changing and pixel lighting. The SLV96 seamlessly powers a wide range of Kelvix color changing and digital pixel products, ensuring consistent, dynamic lighting for creative displays.

Dimensions



Order Code



Kelvix reserves the right to update the product specifications at any time. Field modifications will void Kelvix warranty
 Conforms to UL8750. Certified to CAN/CSA Standard C22.2 NO. 250.13

Fixture Type _____

Project Name _____

Location _____



Product Details

SLV96

SPECIFICATION

Spec	SLV96	
Input		
Input Voltage	100 - 277V AC	
Input Current	0.8A	
Input Frequency	47 - 63Hz, 50/60 Typical	
Inrush Current (Cold Start)	120V AC	20A, 1.6ms @ 50% Load
	230V AC	30A, 1.4ms @ 50% Load
	277V AC	27A, 1.2ms @ 50% Load
Leakage Current (60Hz)	120V AC	<0.5 mA
General Characteristics		
Power Factor	120V AC	0.99 @ 100% Load
	230V AC	0.97 @ 100% Load
	277V AC	0.97 @ 100% Load
Total Harmonic Distortion	120V AC	<15% @ 100% Load
	230V AC	<20% @ 100% Load
	277V AC	<20% @ 100% Load
Efficiency - Steady State	120V AC	83% @ 100% Load
	230V AC	88% @ 100% Load
	277V AC	87% @ 100% Load
Turn On Delay Time, Cold Start, No Dimmer		
Output		
Output Voltage	24V	
Output Current	4A	
Output Power	96W	
Voltage Tolerance	±0.5V	
Protection		
Over Loading	≤120% constant current limiting, auto-recovery	
Over Temperature Protection	212°F (100°C) ±18°F (10°C) shut down o/p voltage, automatically recover after cooling	
Short Circuit Protection	shut down o/p voltage, re-power on to recover after fault condition is removed	

Kelvix reserves the right to update the product specifications at any time. Field modifications will void Kelvix warranty
 Conforms to UL8750. Certified to CAN/CSA Standard C22.2 NO. 250.13

Fixture Type _____

Project Name _____

Location _____



Product Details

SLV96

SPECIFICATION

Spec	SLV96
Environment	
Storage Temperature	-40°F (-40°C) - 176°F (80°C), 10% RH to 95% RH
Ambient Operating Temperature	-35°F(-37°C) – 158°F (70°C)
Operating Relative Humidity	20 - 95% Non Condensing
Cooling	Convection cooling
Environment	Dry/Damp/Wet
Others	
Length	14.96" (380mm)
Width	3.03" (77mm)
Height	2.24" (57mm)
Net Weight	3.84lbs (1.74Kg)
Safety Compliance	
Certifications	FCC UL cUL Class 2, UL8750 + UL1310
Vibration	10-500Hz, 5G 10min/1 cycle, period for 60min each along X, Y, Z axes
Withstand Voltage	I/P-O/P: 1.88KVAC
Isolation Resistance	I/P-O/P: 100MΩ / 500VDC / 77°F / 70% RH
EMI Emission	FCC 47 CFR Part 15, Subpart B (US)
Note:	<p>1. All parameters if NOT specially mentioned are measured at 120VAC input, rated load and 77°F of ambient temperature.</p> <p>2. Tolerance: includes set up tolerance, line regulation and load regulation. 3. The power supply is considered as a component that will be operated in combination with final Equipment. Since EMC performance will be affected by the complete installation, the final equipment manufactures must be-qualify EMC Directive on the complete installation again.</p>

Kelvix reserves the right to update the product specifications at any time. Field modifications will void Kelvix warranty
 Conforms to UL8750. Certified to CAN/CSA Standard C22.2 NO. 250.13

Fixture Type _____

Project Name _____

Location _____

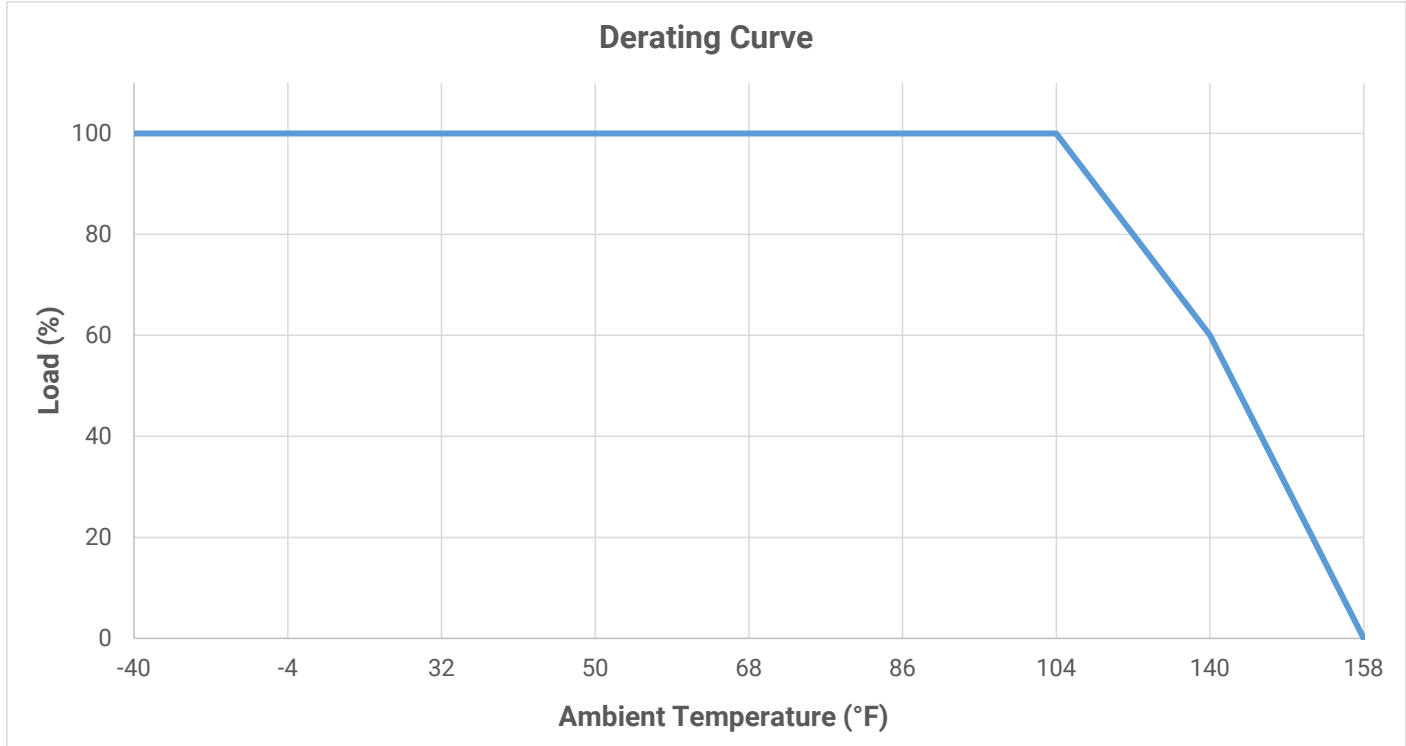


Dimming Chart

SLV96

Charts

DERATING CURVE



Kelvix reserves the right to update the product specifications at any time. Field modifications will void Kelvix warranty
Conforms to UL8750. Certified to CAN/CSA Standard C22.2 NO. 250.13

Fixture Type _____

Project Name _____

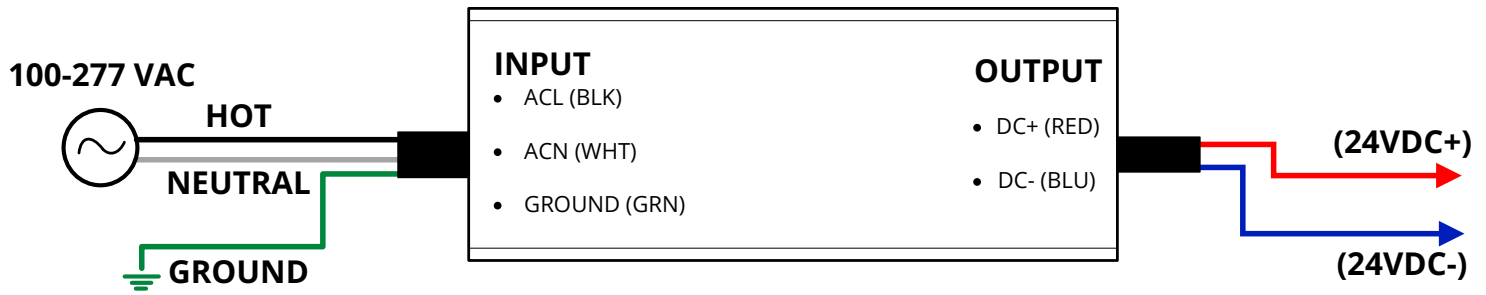
Location _____



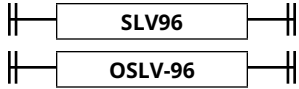
Wiring Diagram

SLV96, OSLV96

Wiring Diagram



Compatible with:



Kelvix reserves the right to update the product specifications at any time. Field modifications will void Kelvix warranty
 Conforms to UL8750. Certified to CAN/CSA Standard C22.2 NO. 250.13

Fixture Type _____

Project Name _____

Location _____