

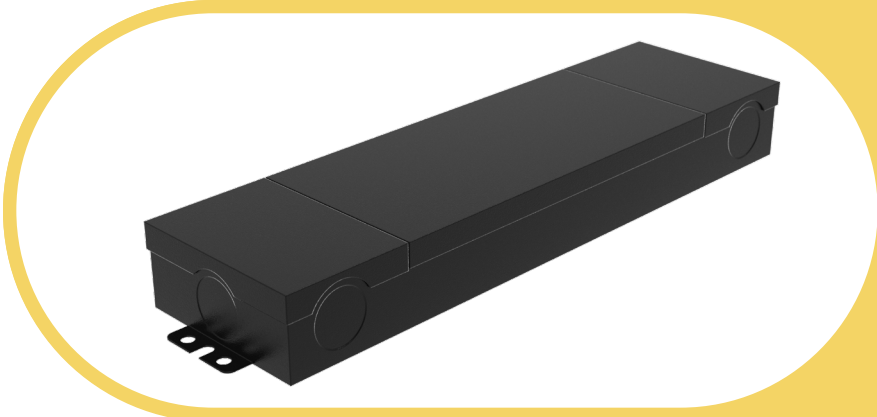


Complete Specification Sheet

Gallant

Gallant

96 Watt
24 Volt
Class 2 Power Supply



Specifications

Category	Power Supplies
Series	0-10V
Family	96W
Input Voltage	120-277V
Output Voltage	24 DC Constant Voltage
Max Wattage	96W
Storage Temp.	-40°F (-40°C) to 185°F (85°C)
Operating Temp.	-4°F (-20°C) to 140°F (60°C)
Dimming Options	0-10V

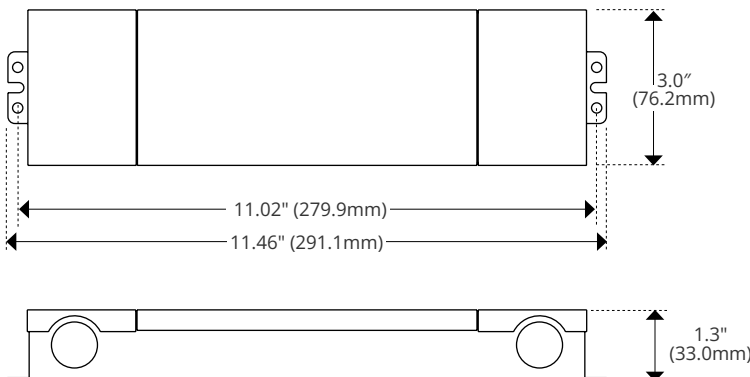
Features

- Multi AC Input Voltage (120-277V)
- Linear Form Factor, Suitable for Field Installation
- Designed for Indoor Installations, Dry and Damp UL Approved
- Isolated 0-10V (0-100%)
- Linear Dimming Curve

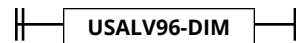
Features

The Gallant (USALV96-DIM) is a constant voltage LED power supply engineered for projects requiring BABA and BAA compliant solutions. With multi 120–277V input and smooth 0–10V dimming on a linear curve, it delivers consistent control for modern lighting systems. UL listed for Dry and Damp locations and with final assembly in America, the Gallant provides a dependable, specification-ready choice for commercial and architectural installations.

Dimensions



Order Code



Kelvix reserves the right to update the product specifications at any time. Field modifications will void Kelvix warranty
 Conforms to UL8750. Certified to CAN/CSA Standard C22.2 NO. 250.13

Fixture Type _____

Project Name _____

Location _____



Product Details

Gallant

SPECIFICATION

Spec	USALV96-DIM	
Input		
Input Voltage	108 - 304V AC	
Input Frequency	50/60 Typical	
Input Current	120V AC @ 100% Load	0.94A
Inrush Current (Cold Start)	230V AC	20A
General Characteristics		
Power Factor	120V AC	0.9 @ 100% Load
	230V AC	0.9 @ 100% Load
	277V AC	0.9 @ 100% Load
Efficiency - Steady State	120V AC	86% @ 30% - 100% Load
	277V AC	86% @ 50% - 100% Load
Output		
Output Voltage	24V	
Output Current	4A	
Output Power	96W	
0-10V or Resistor Dimming		
Can be used to dim the output voltage via a standard commercial wall dimmer (0-10VDC), or potentiometer. The dimming range is 100% VOUT to 5% VOUT. When DIM is 8-10VDC, the output voltage maintains 100% VOUT, and when DIM is below 1.0V, the output voltage is 0%.		
Absolute Maximum Voltage on 0-10 V Pin	0 - 12V	
Source Current on 0-10 V Dimming Pin	0.2 - 1.5 mA	
DIM Voltage for Full Bright	8V	
Protection		
Over Loading	4.0 - 4.5A	
Over Temperature Protection	If the case temperature exceeds OTP point, the output voltage of the driver is automatically reduced.	
	194°F (90°C) - 212°F (100°C), 203°F (95°C) Typical	
Short Circuit Protection	Auto-recovery after fault conditions are removed.	

Kelvix reserves the right to update the product specifications at any time. Field modifications will void Kelvix warranty
 Conforms to UL8750. Certified to CAN/CSA Standard C22.2 NO. 250.13

Fixture Type _____

Project Name _____

Location _____



Product Details

Gallant

SPECIFICATION

Spec	USALV96-DIM
Environment	
Storage Temperature	-40°F (-40°C) - 185°F (85°C), 5% RH to 95% RH
Ambient Operating Temperature	-4°F (-20°C) to 140°F (60°C)
Operating Relative Humidity	5 - 95% Non Condensing
Cooling	Convection cooling
Environment	IP20
Others	
Life Time Hours	50,000 Hours 176°F Case Temperature
Mean Time Between Failure	258,000 Hours at 104°F (40°C) with (70°C) Case Temperature
Length	11.46" (291.1mm)
Width	3.0" (76.20mm)
Height	1.30" (33.0mm)
Net Weight	1335g
Safety Compliance	
Certifications	UL8750, CAN/CSA-C22.2 No. 250.13
EMI Emission	FCC 47 CFR Part 15, Subpart B (US)

Kelvix reserves the right to update the product specifications at any time. Field modifications will void Kelvix warranty
 Conforms to UL8750. Certified to CAN/CSA Standard C22.2 NO. 250.13

Fixture Type _____

Project Name _____

Location _____

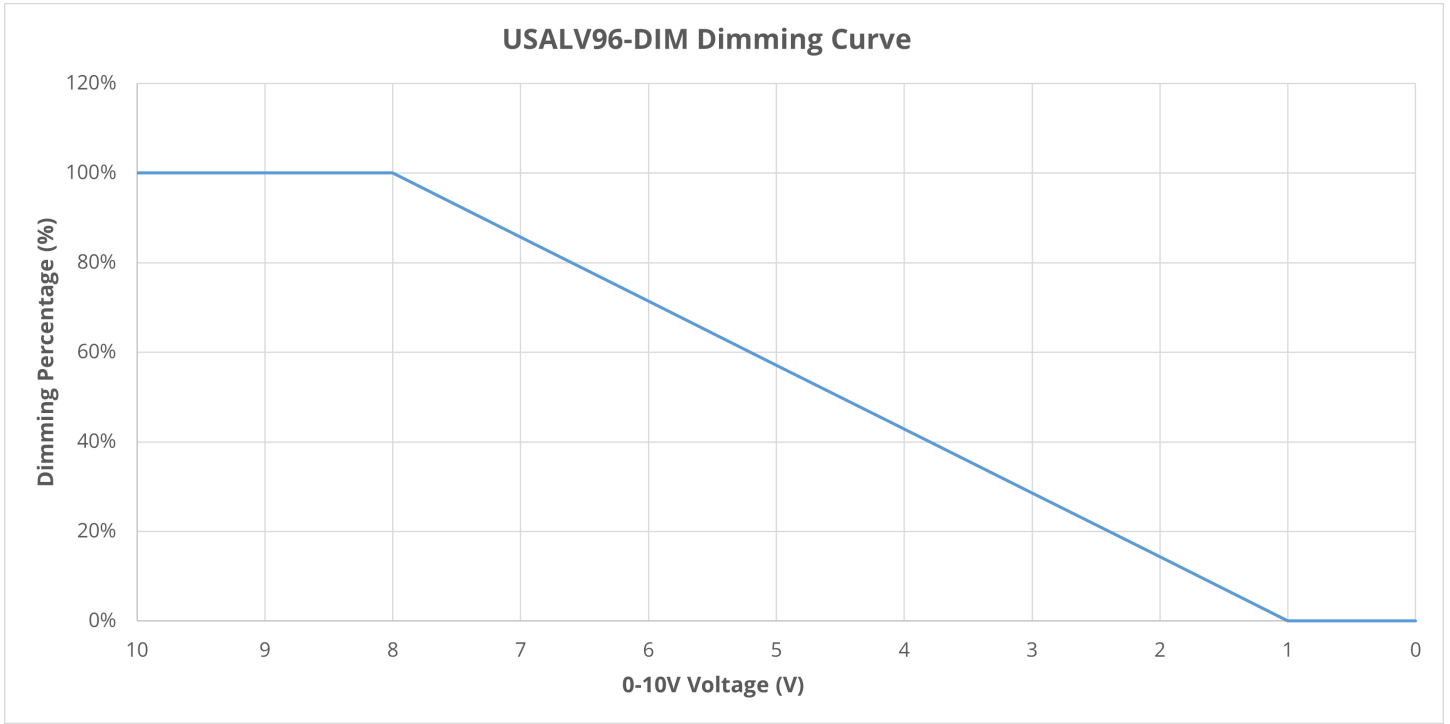


Dimming Chart

Gallant

Charts

DIMMING CURVE (FULL)



Kelvix reserves the right to update the product specifications at any time. Field modifications will void Kelvix warranty
 Conforms to UL8750. Certified to CAN/CSA Standard C22.2 NO. 250.13

Fixture Type _____

Project Name _____

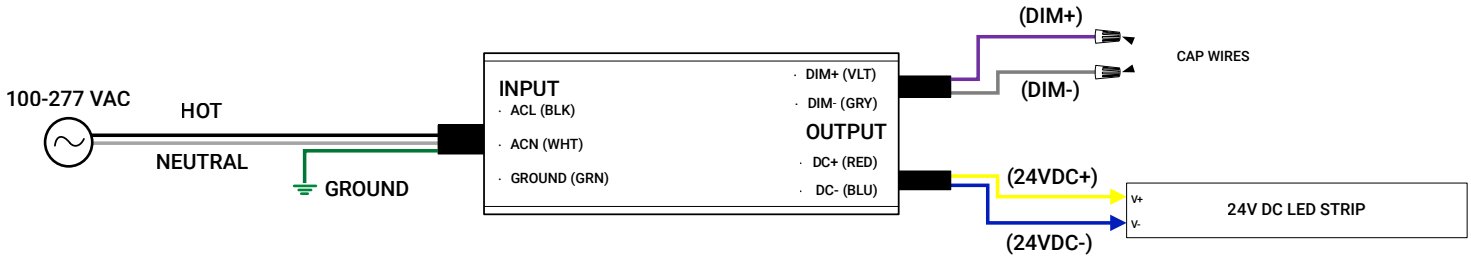
Location _____



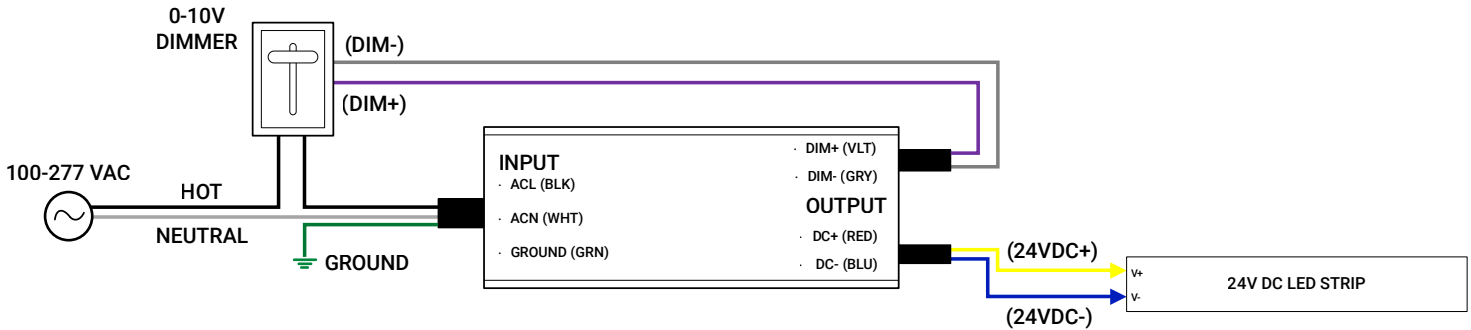
Wiring Diagram

Gallant

STANDARD APPLICATION (NO DIMMING)

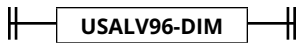


SECONDARY SIDE DIMMING (0-10V)



0-10V Dimmer or dimming system must be capable of sinking 1.5mA per USALV96-DIM connected.

Compatible with:



Kelvix reserves the right to update the product specifications at any time. Field modifications will void Kelvix warranty
Conforms to UL8750. Certified to CAN/CSA Standard C22.2 NO. 250.13

Fixture Type _____

Project Name _____

Location _____