



# Complete Specification Sheet

## Floptix™ Symmetric Static White

LINEAR  
LED



# Floptix™ Symmetric Static White

Flexible Optics



### Specifications

<b>Category</b>	Linear LED
<b>Series</b>	Floptix Symmetric
<b>Family</b>	Static White
<b>Watts Per Foot</b>	4.88W/ft
<b>Environment</b>	IP67
<b>CRI</b>	90+
<b>CCT Options</b>	2400K, 2700K, 3000K, 3500K, 4000K, 5000K
<b>Input Voltage</b>	24V DC
<b>Width</b>	0.87in (23mm)
<b>Height</b>	0.43in (11mm)
<b>Max Run Length</b>	16ft (4.87M)
<b>Cut Intervals</b>	6.57in (167.0mm)
<b>Bend Diameter</b>	7.0in (180mm)
<b>Bend Direction</b>	Vertical
<b>Beam Angle</b>	20°, 30°, 40°, 50°, 20° x 30°
<b>Operating Temp.</b>	-40°F (-40°C) to 113°F (45°C)
<b>Dimming Options</b>	PWM, Triac, 0-10V, DMX, Hi-lume

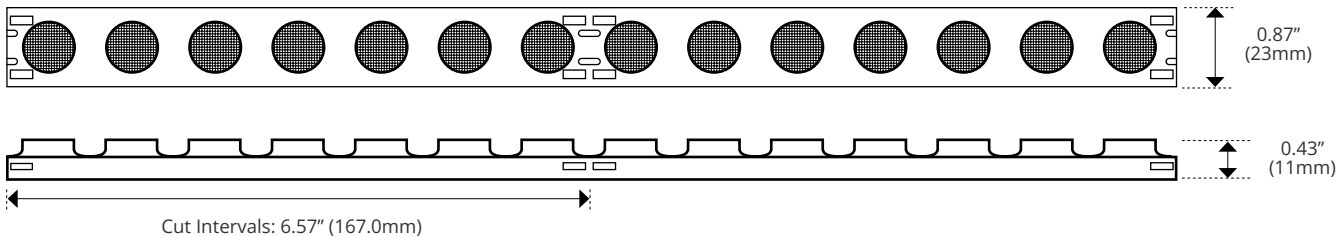
### Features

- Factory Built to Length
- Multiple Beam Options
- Flexible

### Description

Floptix combines flexible led and architectural optics into a versatile system with a multitude of indoor and outdoor applications.

### Dimensions



Kelvix reserves the right to update the product specifications at any time. To maintain warranty, field modifications must follow approved Kelvix installation instruction.

Conforms to ANSI/UL Standard 2108  
Certified to CAN/CSA Standard C22.2 No. 250.2

Fixture Type \_\_\_\_\_

Project Name \_\_\_\_\_

Location \_\_\_\_\_

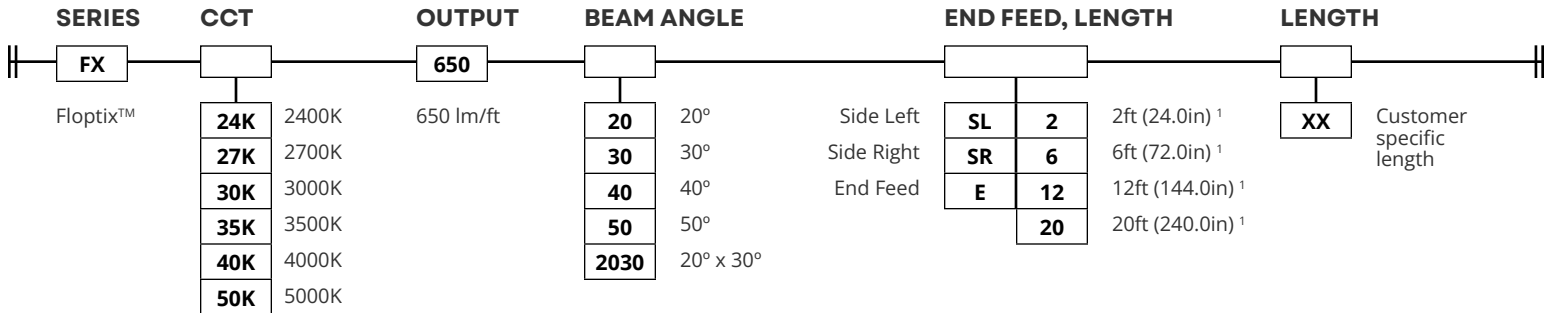


# Product Code Builder

## Floptix™ Symmetric Static White

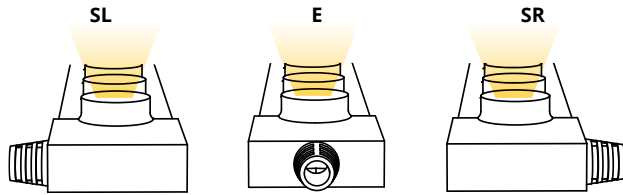
### Product Code Builder

Example: FX-24K-650-20-SL-XX

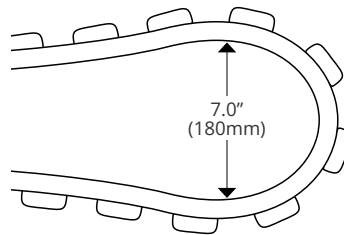


<sup>1</sup>Contact Kelvix for Custom Lengths

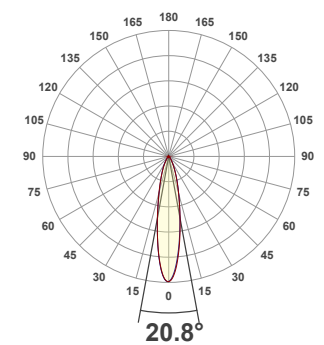
### END FEED



### BEND DIRECTION



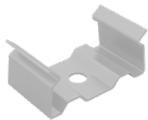
### POLAR PLOT - 30K



## Mounting Options

### IMAGE

Stainless Steel Mounting Clip



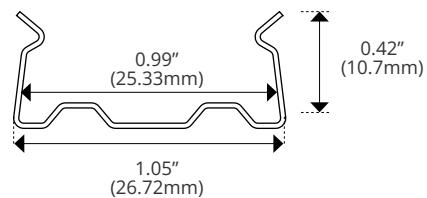
### SPECIFICATIONS



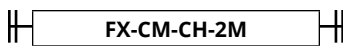
Length	1.14in (28.9mm)
Width	1.05in (26.72mm)
Height	0.53in (13.5mm)
Internal Width	0.99in (25.33mm)

Pack of 10 Units

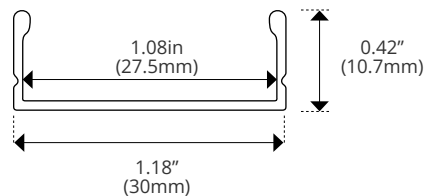
### DIMENSIONS



Aluminum Channel



Length	78.74in (2m)
Width	1.18in (30mm)
Height	0.42in (10.7mm)
Internal Width	1.08in (27.5mm)



Kelvix reserves the right to update the product specifications at any time. To maintain warranty, field modifications must follow approved Kelvix installation instruction.  
 Conforms to ANSI/UL Standard 2108  
 Certified to CAN/CSA Standard C22.2 No. 250.2

Fixture Type \_\_\_\_\_

Project Name \_\_\_\_\_

Location \_\_\_\_\_