



Complete Specification Sheet

Floptix™ Asymmetric Static White

LINEAR
LED

Floptix™ Asymmetric Static White

Flexible Optics



Specifications

Category	Linear LED
Series	Floptix Asymmetric
Family	Static White
Watts Per Foot	4.88W/ft
Environment	IP67
CRI	90+
CCT Options	2400K, 2700K, 3000K, 3500K, 4000K, 5000K
Input Voltage	24V DC
Width	0.87in (23mm)
Height	0.43in (11mm)
Max Run Length	16ft (4.87M)
Cut Intervals	6.57in (167.0mm)
Bend Diameter	7.0in (180mm)
Bend Direction	Vertical
Beam Angle	110° x 70°
Operating Temp.	-40°F (-40°C) to 113°F (45°C)
Dimming Options	PWM, Triac, 0-10V, DMX, Hi-lume

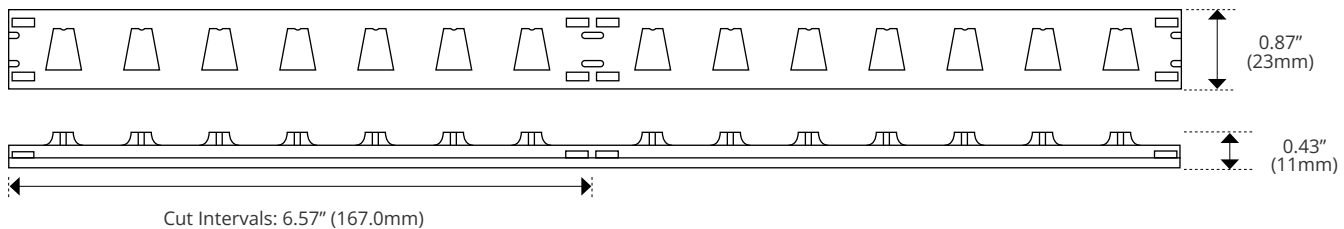
Features

- Factory Built to Length
- Multiple Beam Options
- Flexible

Description

Floptix combines flexible led and architectural optics into a versatile system with a multitude of indoor and outdoor applications.

Dimensions



Kelvix reserves the right to update the product specifications at any time. To maintain warranty, field modifications must follow approved Kelvix installation instruction.
Conforms to ANSI/UL Standard 2108
Certified to CAN/CSA Standard C22.2 No. 250.2

Fixture Type _____

Project Name _____

Location _____

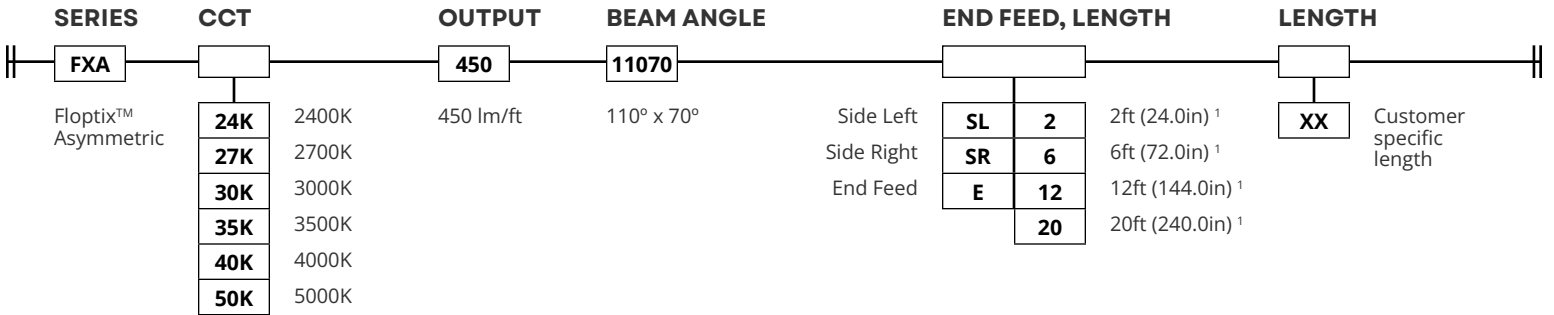


Product Code Builder

Floptix™ Asymmetric Static White

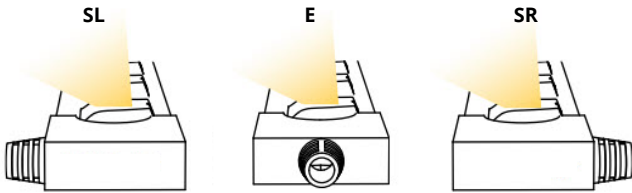
Product Code Builder

Example: FXA-24K-450-11070-SL-XX

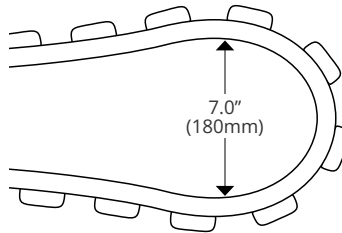


¹Contact Kelvix for Custom Lengths

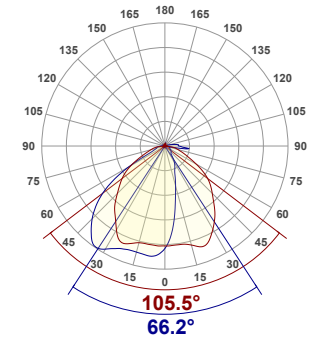
END FEED



BEND DIRECTION



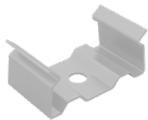
POLAR PLOT - 30K



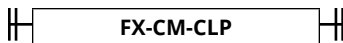
Mounting Options

IMAGE

Stainless Steel Mounting Clip



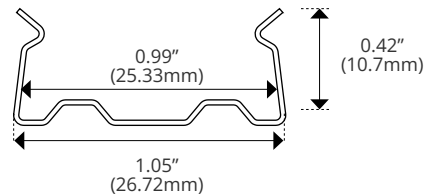
SPECIFICATIONS



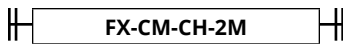
Length	1.14in (28.9mm)
Width	1.05in (26.72mm)
Height	0.53in (13.5mm)
Internal Width	0.99in (25.33mm)

Pack of 10 Units

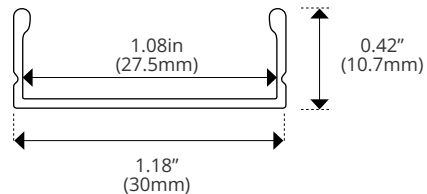
DIMENSIONS



Aluminum Channel



Length	78.74in (2m)
Width	1.18in (30mm)
Height	0.42in (10.7mm)
Internal Width	1.08in (27.5mm)



Kelvix reserves the right to update the product specifications at any time. To maintain warranty, field modifications must follow approved Kelvix installation instruction.
 Conforms to ANSI/UL Standard 2108
 Certified to CAN/CSA Standard C22.2 No. 250.2

Fixture Type _____
 Project Name _____
 Location _____