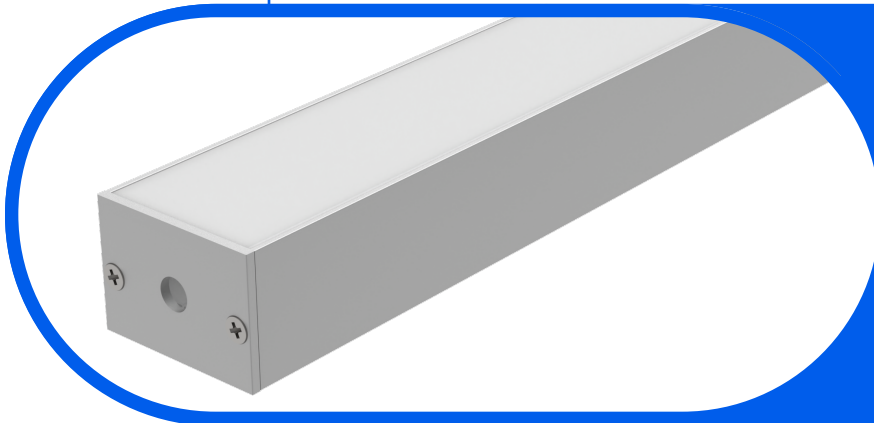




Complete Specification Sheet

Easy Spec 228 Static White



Easy Spec 228 Static White

Easy Spec™: components to easily specify a fixture



Specifications

Category	Easy Spec
Series	Easy 228
Family	Static White
Watts per Foot	0.7 - 14.4 W
IP Rating	IP20, IP67
CRI	90+, 95+
Diodes	U2835
Binning Tolerance	1 SDCM, 2 SDCM, 3 SDCM
CCT Options	1800K - 6500K
Input Voltage	24V DC
Width	1.37in (35.0mm)
Height	1.00in (25.4mm)
Max Run Length	7 - 46ft (2.1 - 14m)
Material	Aluminum
Beam Angle	91.4°, 103.1°, 113.2°, 114°
Lumens per Foot	63 - 1475 lm/ft
Storage Temp.	-4°F (-20°C) to 158°F (70°C)
Operating Temp.	-4°F (-20°C) to 140°F (60°C)
Dimming Options	Triac, ELV, 0-10V, DMX

Features

- Field Serviceable Light Source & Engine
- Dimmable to 0.1%
- Beam Angles As Narrow As 22.5°
- 5/10 Year Warranty for LED Strip / Drivers
- Optional Assembly Available For Any Fixtures Up to 2m (6.56ft)
- Diode Imaging Free

Description

The Easy Spec series is designed for convenience and versatility, allowing you to quickly specify our standard Tape and Channel pairs with just one part number. Products arrive as individual components, providing your installation team the advantage of customizing lengths and configurations on-site for an optimal fit. Assembly services are available upon request.

Kelvix reserves the right to update the product specifications at any time. To maintain warranty, field modifications must follow approved Kelvix installation instruction.
 Conforms to ANSI/UL Standard 2108
 Certified to CAN/CSA Standard C22.2 No. 250.2

Fixture Type _____

Project Name _____

Location _____

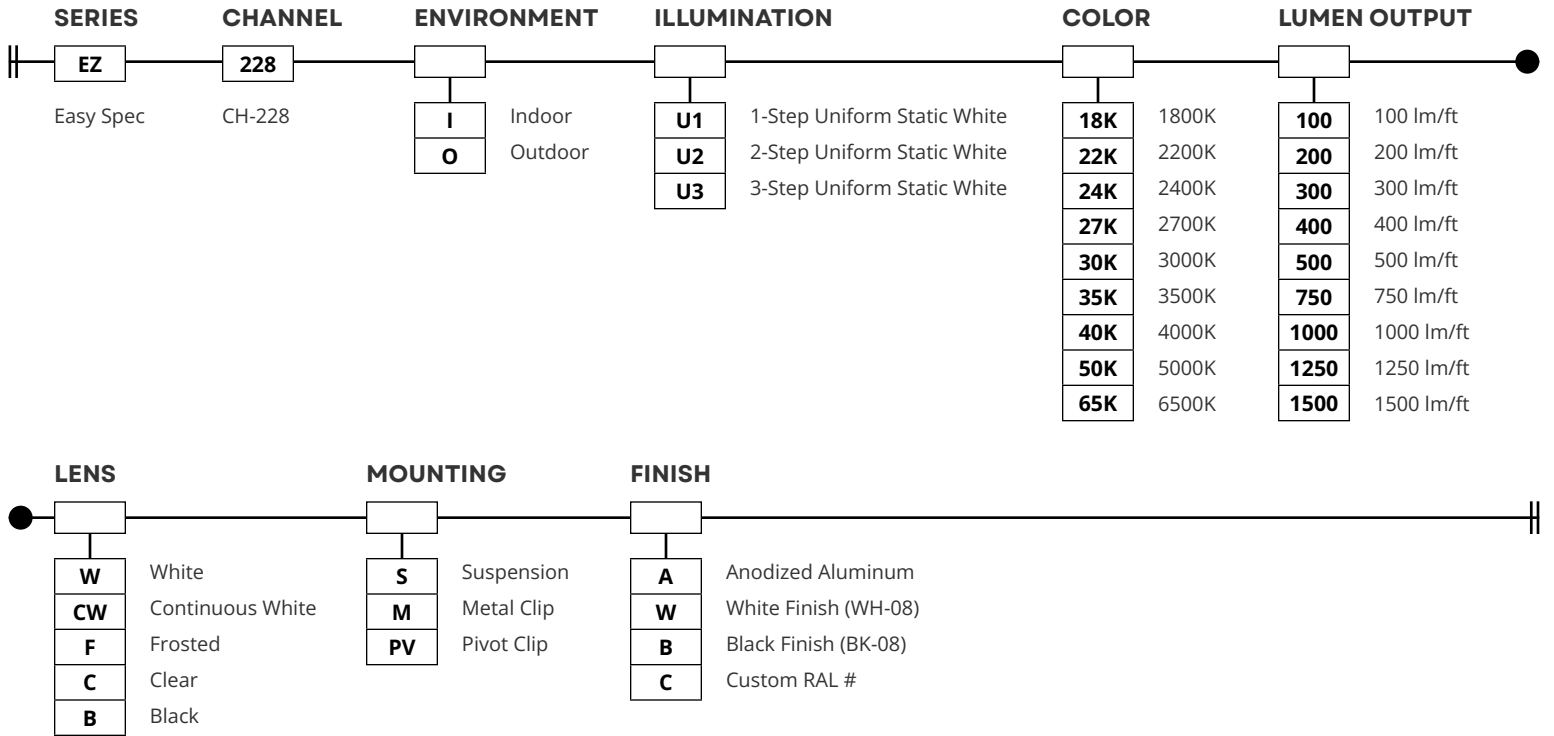


Product Code Builder

Easy Spec 228 Static White

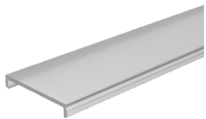
Product Code Builder

Example: EZ-228-I-U1-18K-100-C-P-A



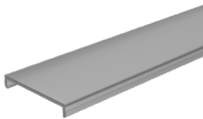
LENS

White / Continuous



W CW

Frosted



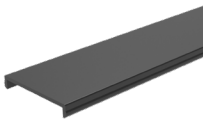
F

Clear



C

Black



B

MOUNTING

Suspension



S

Pivot Clip



PV

Metal Clip



M

FINISH

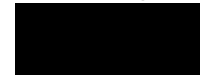
Anodized Aluminum



White Finish (WH-08)



Black Finish (BK-08)



Custom RAL #



Kelvix reserves the right to update the product specifications at any time. To maintain warranty, field modifications must follow approved Kelvix installation instruction.
 Conforms to ANSI/UL Standard 2108
 Certified to CAN/CSA Standard C22.2 No. 250.2

Fixture Type _____

Project Name _____

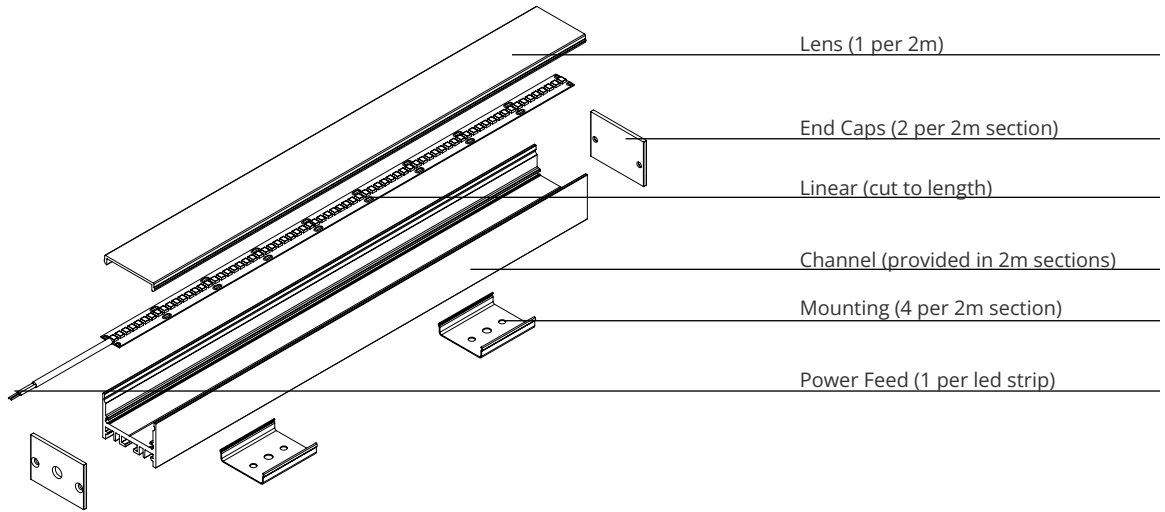
Location _____



Assembly Details

Easy Spec 228

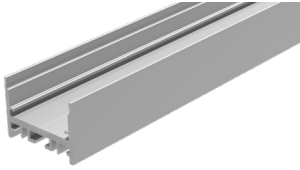
Components



Channel

TYPE

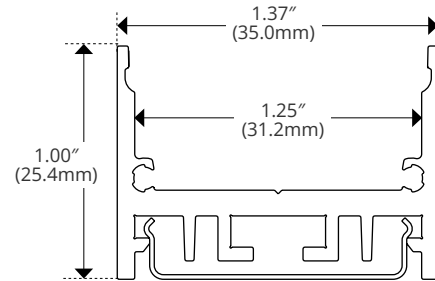
228



DESCRIPTION

CH-228-2M	
Width	1.37in (35.0mm)
Internal Width	1.25in (31.2mm)
Height	1.00in (25.4mm)

DIMENSIONS

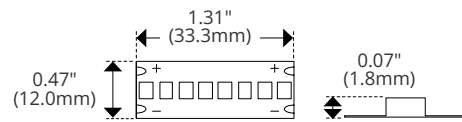


Linear

Uniform Static White (Indoor)



Diode	2835
Width	0.47" (12.0mm)
Cut Intervals	1.31" (33.3mm)
Height	0.07" (1.8mm)



Kelvix reserves the right to update the product specifications at any time. To maintain warranty, field modifications must follow approved Kelvix installation instruction.
 Conforms to ANSI/UL Standard 2108
 Certified to CAN/CSA Standard C22.2 No. 250.2

Fixture Type _____

Project Name _____

Location _____



Lens Details

Easy Spec 228

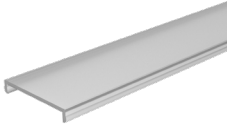
TYPE

DESCRIPTION

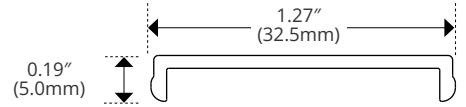
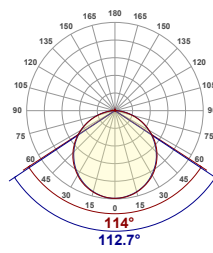
BEAM ANGLE

DIMENSIONS

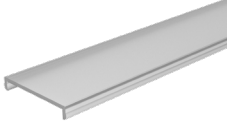
White



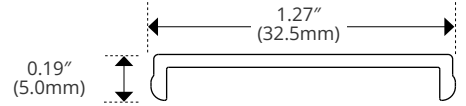
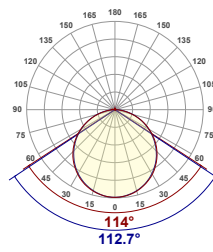
CH-LNS-N-WH-2M	
Material	Polycarbonate
Transmission	55%
Width	1.27" (32.5mm)
Height	0.19" (5.0mm)



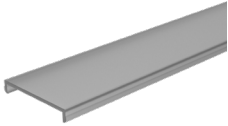
White Continuous



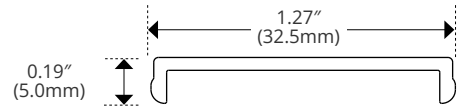
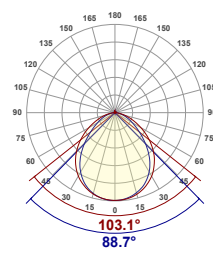
CH-LNS-N-WH-25M	
Material	Polycarbonate
Transmission	55%
Width	1.27" (32.5mm)
Height	0.19" (5.0mm)



Frosted



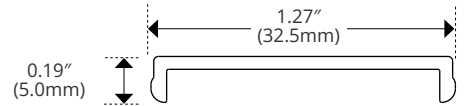
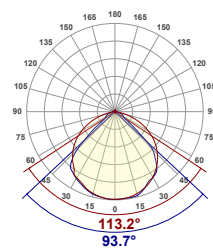
CH-LNS-N-FR-2M	
Material	Polycarbonate
Transmission	88%
Width	1.27" (32.5mm)
Height	0.19" (5.0mm)



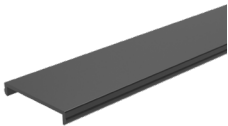
Clear



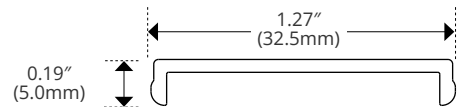
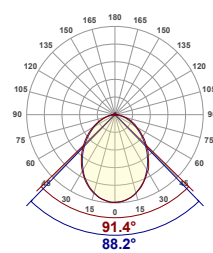
CH-LNS-N-CL-2M	
Material	Polycarbonate
Transmission	92%
Width	1.27" (32.5mm)
Height	0.19" (5.0mm)



Black



CH-LNS-N-BK-2M	
Material	Polycarbonate
Transmission	18%
Width	1.27" (32.5mm)
Height	0.19" (5.0mm)



Kelvix reserves the right to update the product specifications at any time. To maintain warranty, field modifications must follow approved Kelvix installation instruction.
 Conforms to ANSI/UL Standard 2108
 Certified to CAN/CSA Standard C22.2 No. 250.2

Fixture Type _____
 Project Name _____
 Location _____



Mounting Details

Easy Spec 228

TYPE

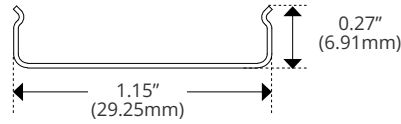
Metal Clip



DESCRIPTION

	CH-228-PAK
Length	1.37in (35mm)
Width	1.15in (29.25mm)
Height	0.27in (6.91mm)
Height w/ Product	1.00in (25.4mm)

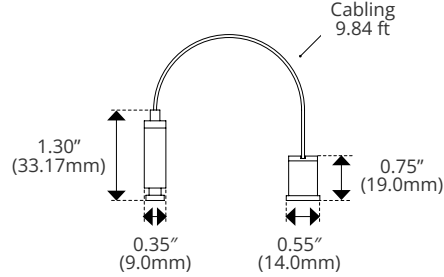
DIMENSIONS



Suspension Clip



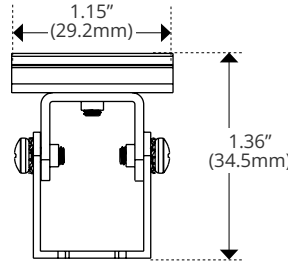
	CH-S-228
Diameter (Mount)	0.35" (9.0mm)
Diameter (Anchor)	0.55" (14.0mm)
Length	9.84ft (3M)
Height (Mount)	1.30" (33.17mm)
Height (Anchor)	0.75" (19.0mm)
Height with Clip	2.61" (66.3mm)



Pivot Clip



	CH-228-PAK-PV
Width	1.15" (29.2mm)
Height	1.36" (34.7mm)



Fixture Type _____
 Project Name _____
 Location _____



Lumen and Power Details

Easy Spec 228 Static White

DELIVERED LUMENS (1 AND 2-STEP)

CCT	Lens	100 (lm/ft)	200 (lm/ft)	300 (lm/ft)	400 (lm/ft)	500 (lm/ft)	750 (lm/ft)	1000 (lm/ft)	1250 (lm/ft)	1500 (lm/ft)
1800K	White	39	89	138	182	208	278	353	454	535
2200K		47	108	167	221	252	328	417	535	630
2400K		49	111	173	228	261	347	441	566	667
2700K		50	115	179	236	270	366	465	597	704
3000K		55	125	195	256	294	381	484	622	733
3500K		65	149	232	305	349	416	528	678	799
4000K		58	133	206	272	311	412	523	672	791
5000K		59	134	208	275	314	419	532	684	806
6500K		59	135	211	277	317	423	537	691	813
1800K	Frosted	55	127	197	260	298	398	505	650	765
2200K		68	154	239	315	360	469	596	765	901
2400K		70	159	247	326	373	496	630	809	954
2700K		72	164	255	337	386	524	665	854	1006
3000K		79	178	278	366	419	545	693	889	1048
3500K		93	212	331	436	498	594	755	970	1142
4000K		83	189	295	389	444	589	748	961	1132
5000K		84	191	298	392	448	600	761	978	1152
6500K		84	193	301	396	453	605	769	987	1163
1800K	Clear	58	134	208	274	314	421	534	686	808
2200K		72	162	252	333	381	495	629	808	952
2400K		74	168	261	344	394	524	666	855	1007
2700K		76	174	270	356	407	553	702	902	1063
3000K		83	188	294	387	443	576	732	939	1107
3500K		98	225	350	461	527	628	797	1025	1206
4000K		88	200	311	411	469	622	790	1015	1195
5000K		88	202	314	414	474	633	804	1033	1217
6500K		89	204	318	418	478	640	812	1043	1228
1800K	Black	10	22	35	46	53	71	90	116	137
2200K		12	27	42	56	64	84	107	137	161
2400K		12	28	44	58	66	89	113	145	171
2700K		13	29	45	60	68	94	119	153	180
3000K		14	32	49	65	74	98	124	159	188
3500K		17	38	59	77	88	106	135	174	204
4000K		15	34	52	69	79	105	134	172	203
5000K		15	34	53	70	79	107	136	175	206
6500K		15	34	53	70	80	108	138	177	208

Kelvix reserves the right to update the product specifications at any time. To maintain warranty, field modifications must follow approved Kelvix installation instruction.
 Conforms to ANSI/UL Standard 2108
 Certified to CAN/CSA Standard C22.2 No. 250.2

Fixture Type _____
 Project Name _____
 Location _____



Lumen and Power Details

Easy Spec 228 Static White

POWER DETAILS (1 AND 2-STEP)

1 and 2 Step	Output (lm/ft)								
	100	200	300	400	500	750	1000	1250	1500
Wattage (W/ft)	0.8	1.7	2.5	3.6	4.0	6.4	8.5	11.6	14.4
Max Run Length (ft)	46	36	29	24	20	16	12	9	7
Black (lm/W)	17	19	20	18	19	15	15	14	13
White (lm/W)	69	73	78	71	73	60	57	54	51
Frosted (lm/W)	98	105	111	102	105	85	81	77	73
Clear (lm/W)	104	141	150	137	141	106	101	95	90

TM30 DATA (1 AND 2-STEP)

1250 lm/ft		CRI	Rf	Rg	R9
1 and 2-Step	1800K	95.7	93.5	100.2	73
	2200K	95	94.1	104.2	91
	2400K	95.7	94.3	104.4	91
	2700K	95.9	95.1	103.9	98
	3000K	97.2	95.3	102.7	98
	3500K	96.7	94.9	103.5	98
	4000K	97.3	94.9	102.5	97
	5000K	96.4	95.1	103.8	97
	6500K	96.9	94.2	102.5	97

Kelvix reserves the right to update the product specifications at any time. To maintain warranty, field modifications must follow approved Kelvix installation instruction.
 Conforms to ANSI/UL Standard 2108
 Certified to CAN/CSA Standard C22.2 No. 250.2

Fixture Type _____

Project Name _____

Location _____



Lumen and Power Details

Easy Spec 228 Static White

DELIVERED LUMENS (3-STEP)

CCT	Lens	100 (lm/ft)	200 (lm/ft)	300 (lm/ft)	400 (lm/ft)	500 (lm/ft)	750 (lm/ft)	1000 (lm/ft)	1250 (lm/ft)	1500 (lm/ft)
1800K	White	42	75	111	154	177	213	274	359	420
2200K		60	108	160	222	254	339	435	571	668
2400K		64	115	170	237	271	366	469	616	721
2700K		67	120	177	247	282	358	460	603	706
3000K		67	121	179	249	285	381	489	642	751
3500K		68	122	181	252	288	400	513	674	788
4000K		70	126	186	259	297	408	523	687	803
5000K		73	131	193	270	308	415	533	700	818
6500K		71	128	190	265	302	403	518	680	796
1800K	Frosted	60	107	159	220	252	305	392	514	601
2200K		85	154	228	317	362	485	622	817	956
2400K		91	164	243	338	387	523	671	881	1031
2700K		95	171	253	353	403	512	657	863	1009
3000K		96	173	255	356	407	544	700	918	1074
3500K		97	175	258	359	411	572	734	963	1127
4000K		100	180	266	370	423	583	748	982	1149
5000K		104	187	276	385	440	593	762	1000	1170
6500K		102	183	271	378	431	577	741	972	1138
1800K	Clear	64	113	168	233	267	322	414	543	635
2200K		90	162	241	335	383	512	657	863	1009
2400K		96	174	257	358	409	552	709	931	1089
2700K		101	181	268	373	426	541	694	911	1066
3000K		101	183	270	376	431	575	739	970	1134
3500K		102	185	273	380	434	604	775	1018	1191
4000K		105	190	281	391	447	616	791	1038	1213
5000K		110	198	291	407	465	627	805	1057	1236
6500K		108	194	286	399	456	609	783	1027	1202
1800K	Black	11	19	28	39	45	55	70	92	108
2200K		15	27	40	56	64	87	111	146	171
2400K		16	29	43	60	69	94	120	158	185
2700K		17	30	45	63	71	92	118	154	181
3000K		17	31	45	63	72	97	125	164	192
3500K		17	31	46	64	73	102	131	172	202
4000K		18	32	47	66	75	104	134	176	206
5000K		18	33	49	68	78	106	136	179	209
6500K		18	33	48	67	76	103	133	174	204

Kelvix reserves the right to update the product specifications at any time. To maintain warranty, field modifications must follow approved Kelvix installation instruction.
 Conforms to ANSI/UL Standard 2108
 Certified to CAN/CSA Standard C22.2 No. 250.2

Fixture Type _____
 Project Name _____
 Location _____



Lumen and Power Details

Easy Spec 228 Static White

POWER DETAILS (3-STEP)

3 Step	Output (lm/ft)								
	100	200	300	400	500	750	1000	1250	1500
Wattage (W/ft)	0.7	1.3	2.0	2.6	3.4	4.4	5.6	7.2	8.6
Max Run Length (ft)	46	30	25	22	19	17	14	11	11
Black (lm/W)	24	24	23	24	21	22	22	23	22
White (lm/W)	96	93	89	96	84	87	87	89	87
Frosted (lm/W)	137	133	128	137	120	124	125	127	125
Clear (lm/W)	145	156	150	161	141	151	152	155	152

TM30 DATA (3-STEP)

1250 lm/ft		CRI	Rf	Rg	R9
3-Step	1800K	93.2	91.9	99.2	64
	2200K	93.6	91.2	105.2	79
	2400K	94.1	89.7	106.1	72
	2700K	94.1	92.3	105.5	94
	3000K	94.6	92.5	103.8	86
	3500K	96.7	92	100.2	80
	4000K	97.5	92	100	91
	5000K	89.7	90	103.3	49
	6500K	89	87.4	101	46

Kelvix reserves the right to update the product specifications at any time. To maintain warranty, field modifications must follow approved Kelvix installation instruction.
 Conforms to ANSI/UL Standard 2108
 Certified to CAN/CSA Standard C22.2 No. 250.2

Fixture Type _____

Project Name _____

Location _____



Power Supply Details

Easy Spec

TYPE

DESCRIPTION

ULV-36



ULV36	
Length	4.50" (114.3mm)
Width	2.31" (58.6mm)
Height	1.37" (34.7mm)

Voltage	24V DC
Compatible Protocols	ELV, MLV, 0-10V, Resistive, PWM
Dim Capability	5%
Wattage	36W

ULV-96-M



ULV96-M	
Length	10.75" (273.0mm)
Width	3.00" (75.8mm)
Height	1.57" (40.0mm)

Voltage	24V DC
Compatible Protocols	ELV, MLV, 0-10V, Triac
Dim Capability	0.1%
Wattage	96W

ULV-192



ULV192	
Length	11.37" (288.7mm)
Width	3.37" (85.5mm)
Height	1.37" (34.7mm)

Voltage	24V DC
Compatible Protocols	ELV, MLV, 0-10V, Resistive, PWM
Dim Capability	1%
Wattage	2x 96W

ULV-96-SC-DIM



ULV96-SC-DIM	
Length	14.96" (380.0mm)
Width	3.03" (77.0mm)
Height	2.24" (57.0mm)

Voltage	24V DC
Compatible Protocols	MLV, 0-10V
Dim Capability	0.1%
Wattage	96W

Kelvix reserves the right to update the product specifications at any time. To maintain warranty, field modifications must follow approved Kelvix installation instruction.
 Conforms to ANSI/UL Standard 2108
 Certified to CAN/CSA Standard C22.2 No. 250.2

Fixture Type _____
 Project Name _____
 Location _____