



Complete Specification Sheet

Easy Spec 217 Static White



Easy Spec 217 Static White

Easy Spec™: components to easily specify a fixture



Specifications

Category	Easy Spec
Series	Easy 217
Family	Static White
Watts per Foot	0.7 - 14.4 W
IP Rating	IP67
CRI	90+, 95+
Diodes	U2835
Binning Tolerance	1 SDCM, 2 SDCM, 3 SDCM
CCT Options	1800K - 6500K
Input Voltage	24V DC
Width	0.67" (17.1mm)
Height	0.31" (8.0mm)
Max Run Length	7 - 46ft (2.1 - 14m)
Material	Aluminum
Beam Angle	112.4°, 83.2°, 65.8°, 61.1°
Lumens per Foot	44 - 1491 lm/ft
Storage Temp.	-4°F (-20°C) to 158°F (70°C)
Operating Temp.	-4°F (-20°C) to 140°F (60°C)
Dimming Options	Triac, ELV, 0-10V, DMX

Features

- Field Serviceable Light Source & Engine
- Dimmable to 0.1%
- Beam Angles As Narrow As 61.1°
- 5/10 Year Warranty for LED Strip / Drivers
- Optional Assembly Available For Any Fixtures Up to 2m (6.56ft)
- Diode Imaging Free

Description

The Easy Spec series is designed for convenience and versatility, allowing you to quickly specify our standard Tape and Channel pairs with just one part number. Products arrive as individual components, providing your installation team the advantage of customizing lengths and configurations on-site for an optimal fit. Assembly services are available upon request.

Kelvix reserves the right to update the product specifications at any time. To maintain warranty, field modifications must follow approved Kelvix installation instruction.
 Conforms to ANSI/UL Standard 2108
 Certified to CAN/CSA Standard C22.2 No. 250.2

Fixture Type _____

Project Name _____

Location _____

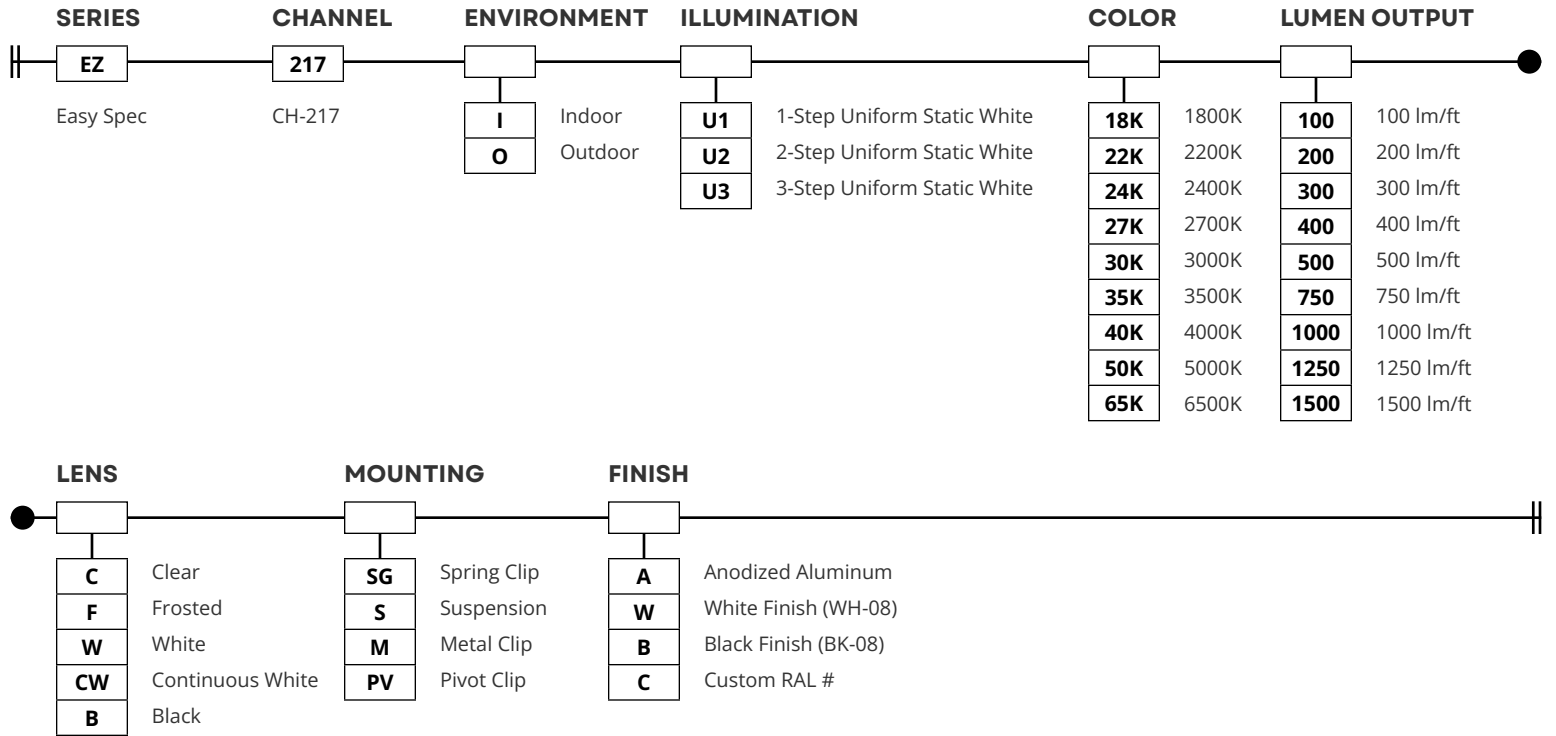


Product Code Builder

Easy Spec 217 Static White

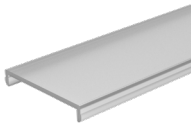
Product Code Builder

Example: EZ-217-I-U1-18K-100-C-P-A



LENS

White / Continuous



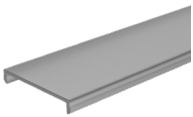
W CW

Clear



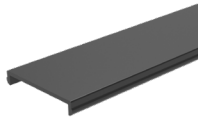
C

Frosted



F

Black



B

MOUNTING

Metal Clip



M

Pivot Clip



PV

Suspension



S

Spring



SG

FINISH

Anodized Aluminum



White Finish (WH-08)



Black Finish (BK-08)



Custom RAL



Kelvix reserves the right to update the product specifications at any time. To maintain warranty, field modifications must follow approved Kelvix installation instruction.
 Conforms to ANSI/UL Standard 2108
 Certified to CAN/CSA Standard C22.2 No. 250.2

Fixture Type _____

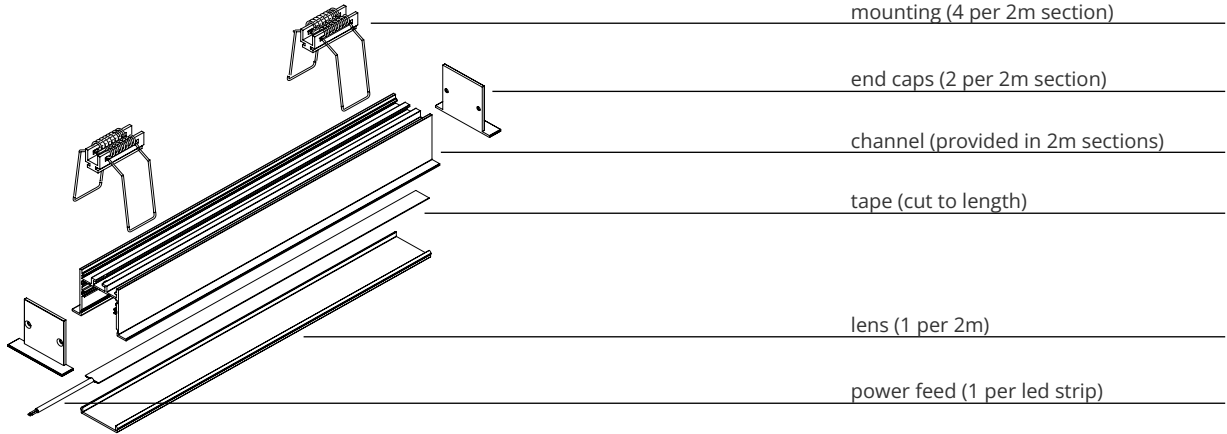
Project Name _____

Location _____



Assembly Details

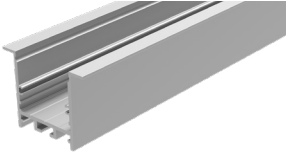
Easy Spec 217



Channel

TYPE

217

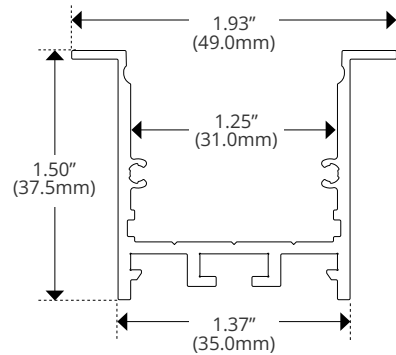


DESCRIPTION

CH-217-N-2M

Width	1.93" (49.0mm)
Internal Width	1.25" (31.0mm)
Height	1.50" (37.5mm)

DIMENSIONS

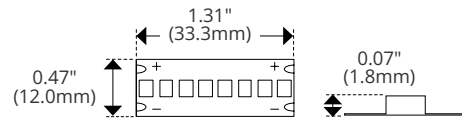


Linear

Uniform Static White (Indoor)



Diode	2835
Width	0.47" (12.0mm)
Cut Intervals	1.31" (33.3mm)
Height	0.07" (1.8mm)



Kelvix reserves the right to update the product specifications at any time. To maintain warranty, field modifications must follow approved Kelvix installation instruction.
 Conforms to ANSI/UL Standard 2108
 Certified to CAN/CSA Standard C22.2 No. 250.2

Fixture Type _____

Project Name _____

Location _____



Lens Details

Easy Spec 217

TYPE

DESCRIPTION

BEAM ANGLE

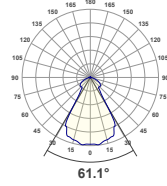
DIMENSIONS

Clear

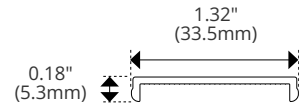


CH-LNS-N-CL-2M

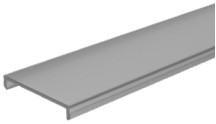
Material	PMMA
Transmission	92%
Width	1.32" (33.5mm)
Height	0.18" (5.3mm)
Height with Lens	1.50" (37.5mm)



Beam Angle	61.1°
-------------------	-------

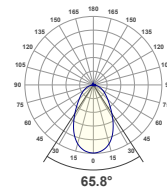


Frosted

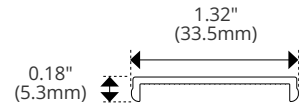


CH-LNS-N-FR-2M

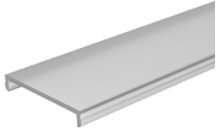
Material	PMMA
Transmission	88%
Width	1.32" (33.5mm)
Height	0.18" (5.3mm)
Height with Lens	1.50" (37.5mm)



Beam Angle	65.8°
-------------------	-------

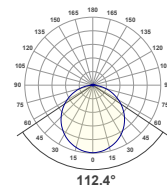


White

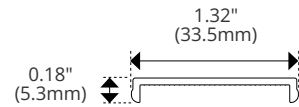


CH-LNS-N-WH-2M

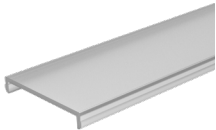
Material	PMMA
Transmission	55%
Width	1.32" (33.5mm)
Height	0.18" (5.3mm)
Height with Lens	1.50" (37.5mm)



Beam Angle	112.4°
-------------------	--------

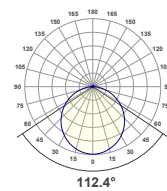


White Continuous

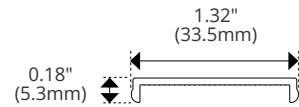


CH-LNS-N-WH-25M

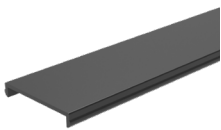
Material	PMMA
Transmission	55%
Width	1.32" (33.5mm)
Height	0.18" (5.3mm)
Height with Lens	1.50" (37.5mm)



Beam Angle	112.4°
-------------------	--------

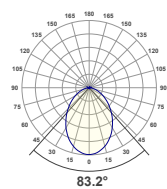


Black

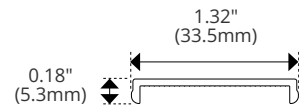


CH-LNS-N-BK-2M

Material	PMMA
Transmission	18%
Width	1.32" (33.5mm)
Height	0.18" (5.3mm)
Height with Lens	1.50" (37.5mm)



Beam Angle	83.2°
-------------------	-------





Mounting Details

Easy Spec 217

TYPE

DESCRIPTION

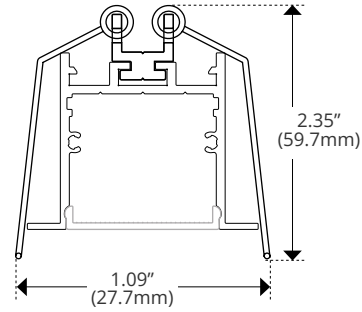
DIMENSIONS

Spring Clip

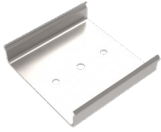


CH-CLP-217 SPRING

Width	1.09" (27.7mm)
Height	2.35" (59.7mm)

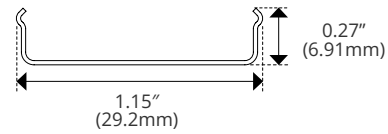


Metal Clip



CH-217-PAK

Width	1.15" (29.2mm)
Height	0.27" (6.91mm)
Height with Clip	1.50" (37.5mm)

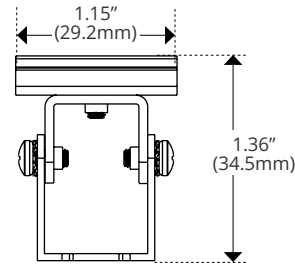


Pivot Clip



CH-218-R1-PAK-PV

Width	1.15" (29.2mm)
Height	1.36" (34.7mm)
Height with Clip	2.57" (65.5mm)

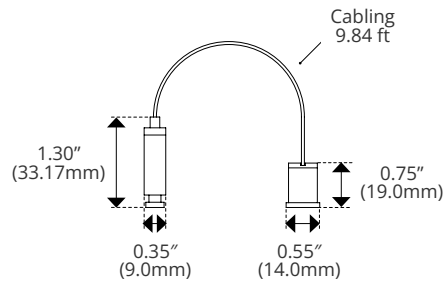


Suspension Clip



CH-S-228

Diameter (Mount)	0.35" (9.0mm)
Diameter (Anchor)	0.55" (14.0mm)
Length	9.84ft (3M)
Height (Mount)	1.30" (33.17mm)
Height (Anchor)	0.75" (19.0mm)
Height with Clip	2.61" (66.3mm)





Lumen and Power Details

Easy Spec 217 Static White

DELIVERED LUMENS (1 AND 2-STEP)

CCT	Lens	100 (lm/ft)	200 (lm/ft)	300 (lm/ft)	400 (lm/ft)	500 (lm/ft)	750 (lm/ft)	1000 (lm/ft)	1250 (lm/ft)	1500 (lm/ft)
1800K	White	31	60	100	135	155	227	293	391	438
2200K		37	73	120	163	187	267	345	461	516
2400K		39	76	125	169	194	283	365	488	545
2700K		40	78	129	174	201	299	386	515	576
3000K		44	85	140	190	218	311	402	536	600
3500K		52	101	167	226	259	339	438	584	653
4000K		47	90	149	201	231	336	434	579	647
5000K		47	91	150	203	233	342	441	589	659
6500K		48	92	151	205	236	345	446	595	665
1800K	Frosted	49	93	154	210	251	354	450	607	670
2200K		59	113	187	255	304	417	531	716	789
2400K		61	116	194	264	314	441	561	757	835
2700K		63	120	201	272	325	466	592	799	881
3000K		69	131	218	296	353	485	617	832	918
3500K		81	156	259	352	420	529	673	907	1000
4000K		72	139	231	314	374	523	667	899	991
5000K		73	140	233	317	378	534	679	915	1009
6500K		74	141	235	319	381	538	685	923	1018
1800K	Clear	51	98	162	219	251	369	470	697	706
2200K		61	119	197	266	304	434	554	821	832
2400K		63	123	204	275	315	459	586	869	880
2700K		66	127	211	284	326	485	618	917	929
3000K		72	138	229	309	354	505	644	955	968
3500K		85	164	273	368	421	550	702	1041	1055
4000K		76	146	243	328	375	545	696	1031	1045
5000K		77	148	245	331	379	556	708	1050	1064
6500K		77	149	247	333	382	560	715	1060	1074
1800K	Black	10	19	32	43	50	74	92	124	138
2200K		12	23	39	53	61	88	109	146	162
2400K		12	24	40	54	63	93	115	154	172
2700K		13	25	41	56	65	98	122	163	181
3000K		14	27	45	61	71	102	127	170	189
3500K		17	32	53	73	84	111	138	185	206
4000K		15	28	48	65	75	110	137	183	204
5000K		15	29	48	65	76	112	139	187	208
6500K		15	29	48	66	76	113	141	188	210

Kelvix reserves the right to update the product specifications at any time. To maintain warranty, field modifications must follow approved Kelvix installation instruction.
 Conforms to ANSI/UL Standard 2108
 Certified to CAN/CSA Standard C22.2 No. 250.2

Fixture Type _____
 Project Name _____
 Location _____



Lumen and Power Details

Easy Spec 217 Static White

LUMEN DATA

	Lens	Output (lm/ft)								
		100	200	300	400	500	750	1000	1250	1500
	Clear	83.1	85.7	84.4	84.4	83.3	79.0	78.3	85.3	77.4
	Frosted	79.8	81.7	80.1	80.7	82.8	75.8	75.0	73.3	73.1
	White	51.2	52.6	51.4	51.8	51.2	48.6	48.7	46.8	47.8
	Black	16.4	16.5	16.4	16.3	16.3	15.3	15.3	14.8	15.0
Wattage (W/ft)	All	0.8	1.7	2.5	3.6	4.0	6.4	8.5	11.6	14.4
Max Run Length (ft)	All	46	36	29	24	20	16	12	9	7

TM30 DATA

	1250 lm/ft	CRI	Rf	Rg	R9
1 and 2-Step	1800K	95.7	93.5	100.2	73
	2200K	95	94.1	104.2	91
	2400K	95.7	94.3	104.4	91
	2700K	95.9	95.1	103.9	98
	3000K	97.2	95.3	102.7	98
	3500K	96.7	94.9	103.5	98
	4000K	97.3	94.9	102.5	97
	5000K	96.4	95.1	103.8	97
	6500K	96.9	94.2	102.5	97

Kelvix reserves the right to update the product specifications at any time. To maintain warranty, field modifications must follow approved Kelvix installation instruction.
 Conforms to ANSI/UL Standard 2108
 Certified to CAN/CSA Standard C22.2 No. 250.2

Fixture Type _____

Project Name _____

Location _____



Lumen and Power Details

Easy Spec 217 Static White

DELIVERED LUMENS (3-STEP)

CCT	Lens	100 (lm/ft)	200 (lm/ft)	300 (lm/ft)	400 (lm/ft)	500 (lm/ft)	750 (lm/ft)	1000 (lm/ft)	1250 (lm/ft)	1500 (lm/ft)
1800K	White	31	63	105	120	163	230	293	384	447
2200K		37	77	126	146	198	271	345	452	527
2400K		39	79	131	151	205	286	365	479	558
2700K		40	82	135	156	212	302	385	505	588
3000K		44	89	147	170	230	315	401	526	613
3500K		52	106	175	202	274	343	437	573	668
4000K		47	94	156	180	244	340	433	568	662
5000K		47	95	158	182	246	346	441	578	674
6500K		48	96	159	183	249	349	445	584	680
1800K	Frosted	48	97	160	187	249	350	452	588	684
2200K		57	118	194	227	302	413	532	692	806
2400K		59	122	201	235	312	436	563	732	852
2700K		61	126	208	243	323	461	594	773	900
3000K		67	137	226	264	351	480	619	805	937
3500K		79	163	269	314	418	523	675	877	1021
4000K		70	145	240	280	372	518	669	869	1012
5000K		71	146	242	283	376	528	681	885	1031
6500K		72	148	244	285	379	532	687	893	1040
1800K	Clear	50	100	168	198	261	368	472	617	715
2200K		60	122	204	240	316	433	556	727	843
2400K		62	126	211	249	327	458	588	769	892
2700K		64	130	218	257	338	484	620	811	941
3000K		70	142	237	279	367	504	646	845	980
3500K		83	169	282	332	437	549	704	921	1068
4000K		74	151	251	296	389	544	698	913	1058
5000K		75	152	254	299	393	554	711	929	1078
6500K		75	153	256	301	396	559	717	938	1088
1800K	Black	9	20	33	39	52	73	94	124	146
2200K		11	24	40	47	63	86	111	146	172
2400K		11	25	42	49	65	91	117	154	182
2700K		12	25	43	51	67	96	124	163	192
3000K		13	28	47	55	73	100	129	170	200
3500K		15	33	56	65	87	109	141	185	218
4000K		14	29	50	58	77	108	139	183	216
5000K		14	30	50	59	78	110	142	187	219
6500K		14	30	51	59	79	111	143	188	221

Kelvix reserves the right to update the product specifications at any time. To maintain warranty, field modifications must follow approved Kelvix installation instruction.

Conforms to ANSI/UL Standard 2108

Certified to CAN/CSA Standard C22.2 No. 250.2

Fixture Type _____

Project Name _____

Location _____



Lumen and Power Details

Easy Spec 217 Static White

LUMEN DATA

	Lens	Output (lm/ft)								
		100	200	300	400	500	750	1000	1250	1500
	Clear	93.5	95.0	93.0	94.4	94.0	96.9	97.1	97.1	95.6
	Frosted	89.6	91.1	88.5	87.9	90.0	92.4	93.1	92.5	90.9
	White	58.1	59.1	57.7	56.6	59.0	60.5	59.8	60.5	59.2
	Black	18.0	18.5	18.3	18.2	18.3	18.8	18.6	18.5	18.3
Wattage (W/ft)	All	0.7	1.3	2.0	2.6	3.4	4.4	5.6	7.2	8.6
Max Run Length (ft)	All	46	30	25	22	19	17	14	11	11

TM30 DATA

	1250 lm/ft	CRI	Rf	Rg	R9
3-Step	1800K	93.2	91.9	99.2	64
	2200K	93.6	91.2	105.2	79
	2400K	94.1	89.7	106.1	72
	2700K	94.1	92.3	105.5	94
	3000K	94.6	92.5	103.8	86
	3500K	96.7	92	100.2	80
	4000K	97.5	92	100	91
	5000K	89.7	90	103.3	49
	6500K	89	87.4	101	46

Kelvix reserves the right to update the product specifications at any time. To maintain warranty, field modifications must follow approved Kelvix installation instruction.
 Conforms to ANSI/UL Standard 2108
 Certified to CAN/CSA Standard C22.2 No. 250.2

Fixture Type _____

Project Name _____

Location _____



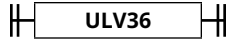
Power Supply Details

Easy Spec

TYPE

DESCRIPTION

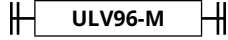
ULV-36



Length	4.50" (114.3mm)
Width	2.31" (58.6mm)
Height	1.37" (34.7mm)

Voltage	24V DC
Compatible Protocols	ELV, MLV, 0-10V, Resistive, PWM
Dim Capability	5%
Wattage	36W

ULV-96-M



Length	10.75" (273.0mm)
Width	3.00" (75.8mm)
Height	1.57" (40.0mm)

Voltage	24V DC
Compatible Protocols	ELV, MLV, 0-10V, Triac
Dim Capability	0.1%
Wattage	96W

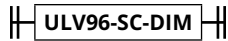
ULV-192



Length	11.37" (288.7mm)
Width	3.37" (85.5mm)
Height	1.37" (34.7mm)

Voltage	24V DC
Compatible Protocols	ELV, MLV, 0-10V, Resistive, PWM
Dim Capability	1%
Wattage	2x 96W

ULV-96-SC-DIM



Length	14.96" (380.0mm)
Width	3.03" (77.0mm)
Height	2.24" (57.0mm)

Voltage	24V DC
Compatible Protocols	MLV, 0-10V
Dim Capability	0.1%
Wattage	96W

Kelvix reserves the right to update the product specifications at any time. To maintain warranty, field modifications must follow approved Kelvix installation instruction.
 Conforms to ANSI/UL Standard 2108
 Certified to CAN/CSA Standard C22.2 No. 250.2

Fixture Type _____
 Project Name _____
 Location _____



Connector Details

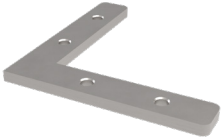
Easy Spec EZ-21X

TYPE

DESCRIPTION

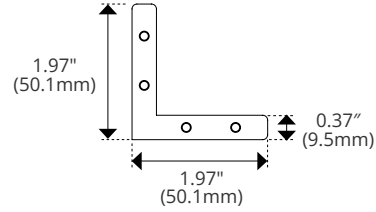
DIMENSIONS

90° Horizontal



CH-CON-01-90V

Length	1.97" (50.1mm)
Width	0.37" (9.5mm)
Height	0.09" (2.5mm)

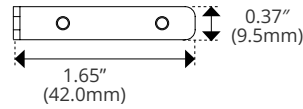


90° Vertical



CH-CON-01-90V

Length	1.65" (42.0mm)
Width	0.37" (9.5mm)
Height	0.09" (2.5mm)

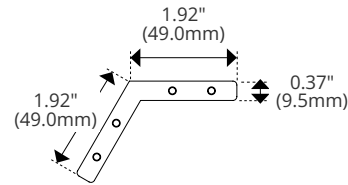


110° Horizontal



CH-CON-01-110H

Length	1.92" (49.0mm)
Width	0.37" (9.5mm)
Height	0.09" (2.5mm)

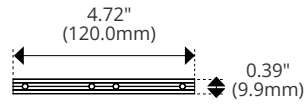


180° Straight



CH-CON-21X-180

Length	4.72" (120.0mm)
Width	0.37" (9.5mm)
Height	0.09" (2.5mm)



Note: 2 Per 2M Section Provided

Fixture Type _____
 Project Name _____
 Location _____