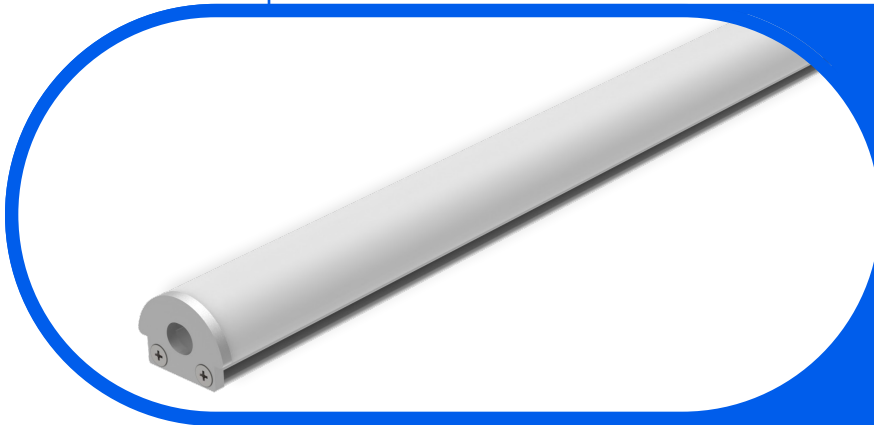




Complete Specification Sheet

Easy Spec 202 Static White



Easy Spec 202 Static White (Indoor)

Easy Spec™: components to easily specify a fixture



Specifications

Category	Easy Spec
Series	Easy 202
Family	Static White
Watts per Foot	0.7 - 14.4 W
IP Rating	IP20
CRI	90+, 95+
Diodes	U2835
Binning Tolerance	1 SDCM, 2 SDCM, 3 SDCM
CCT Options	1800K - 6500K
Input Voltage	24V DC
Width	0.68in (17.1mm)
Height	0.62in (16.0mm)
Max Run Length	7 - 46ft (2.1 - 14m)
Material	Aluminum
Beam Angle	100.6°, 102.1°, 106.1°, 110.4°, 112.8°, 115.3°
Lumens per Foot	63 - 1475 lm/ft
Storage Temp.	-4°F (-20°C) to 158°F (70°C)
Operating Temp.	-4°F (-20°C) to 140°F (60°C)
Dimming Options	Triac, ELV, 0-10V, DMX

Features

- Field Serviceable Light Source & Engine
- Dimmable to 0.1%
- Beam Angles As Narrow As 22.5°
- 5/10 Year Warranty for LED Strip / Drivers
- Optional Assembly Available For Any Fixtures Up to 2m (6.56ft)
- Diode Imaging Free

Description

The Easy Spec series is designed for convenience and versatility, allowing you to quickly specify our standard Tape and Channel pairs with just one part number. Products arrive as individual components, providing your installation team the advantage of customizing lengths and configurations on-site for an optimal fit. Assembly services are available upon request.

Kelvix reserves the right to update the product specifications at any time. To maintain warranty, field modifications must follow approved Kelvix installation instruction.
 Conforms to ANSI/UL Standard 2108
 Certified to CAN/CSA Standard C22.2 No. 250.2

Fixture Type _____

Project Name _____

Location _____

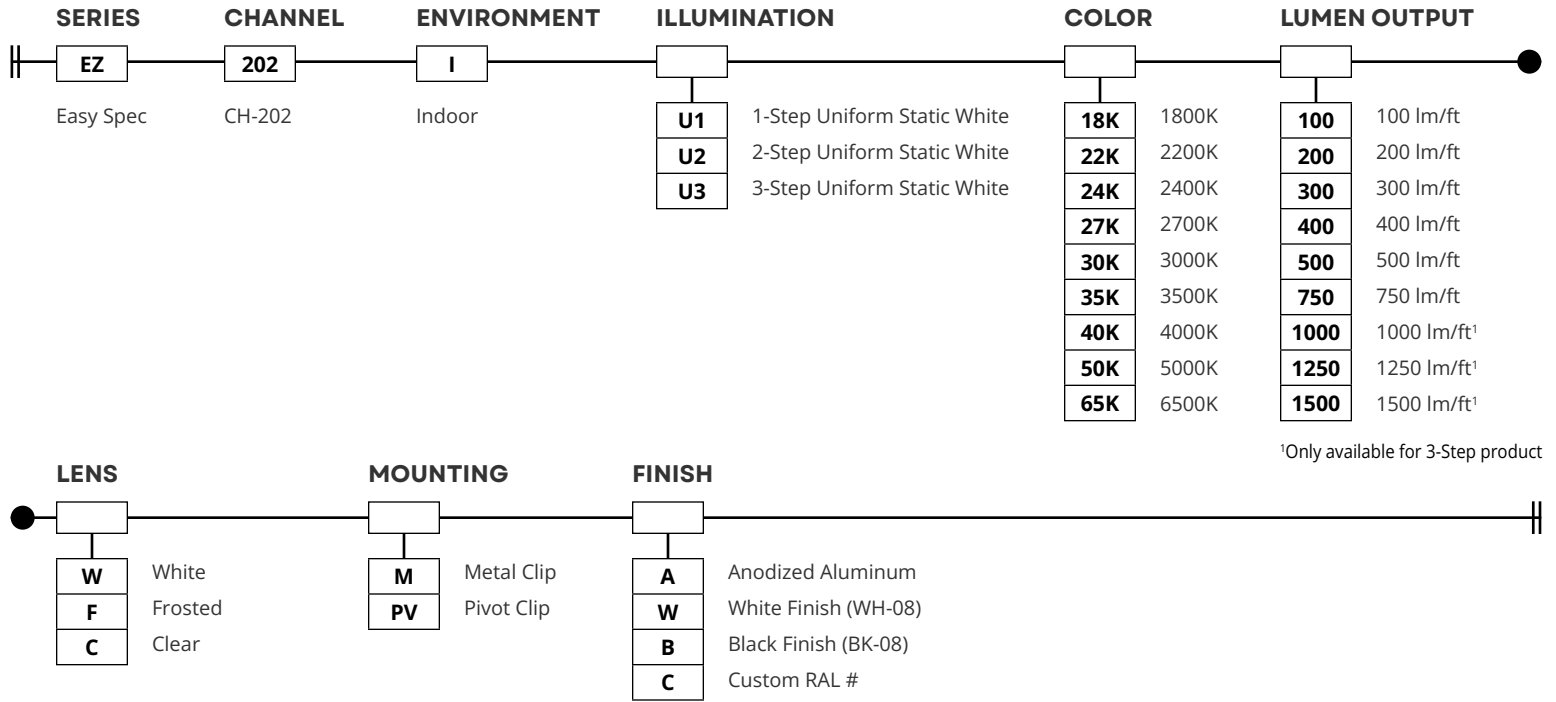


Product Code Builder

Easy Spec 202 Static White

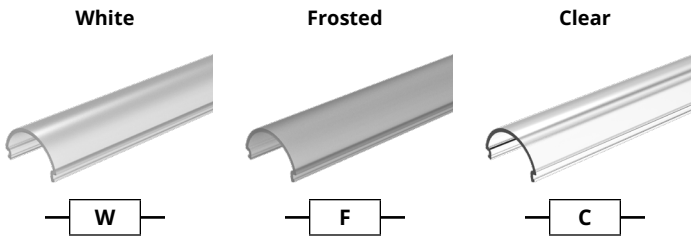
Product Code Builder

Example: EZ-202-I-U1-18K-100-C-P-A

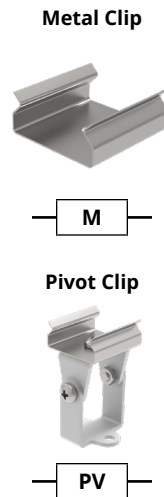


¹Only available for 3-Step product

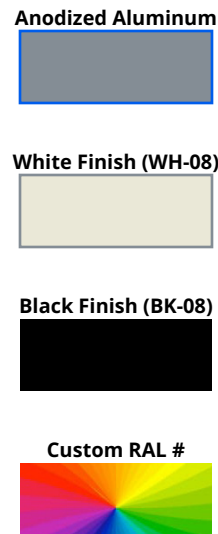
LENS



MOUNTING



FINISH



Kelvix reserves the right to update the product specifications at any time. To maintain warranty, field modifications must follow approved Kelvix installation instruction.
 Conforms to ANSI/UL Standard 2108
 Certified to CAN/CSA Standard C22.2 No. 250.2

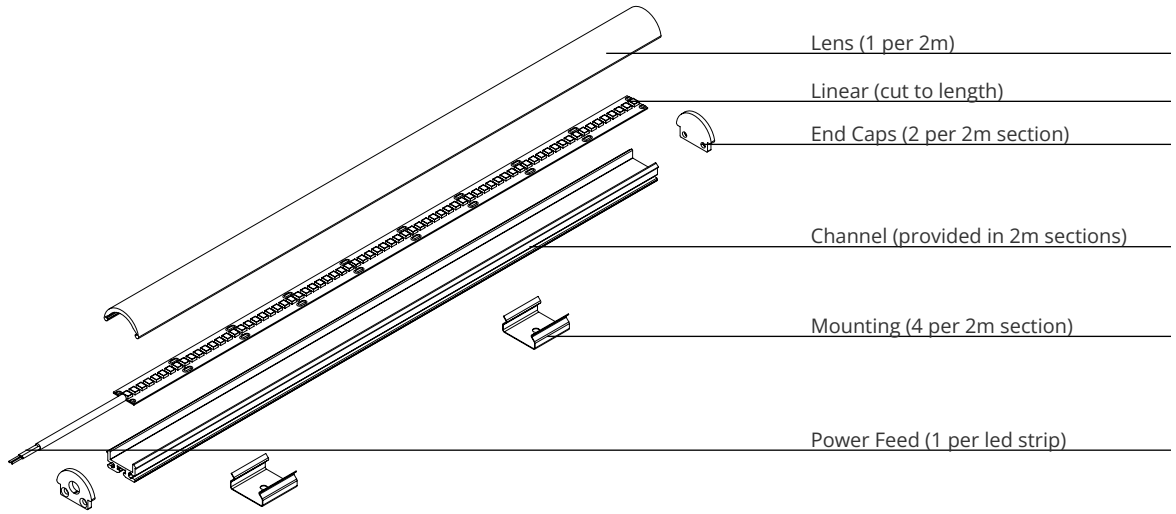
Fixture Type _____
 Project Name _____
 Location _____



Assembly Details

Easy Spec 202 Static White

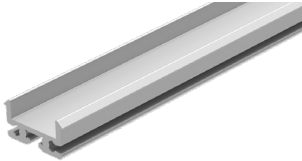
Components



Channel

TYPE

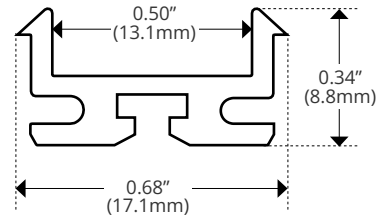
202



DESCRIPTION

	CH-202-2M
Width	0.68in (17.1mm)
Internal Width	0.37in (10.0mm)
Height	0.62in (16.0mm)

DIMENSIONS

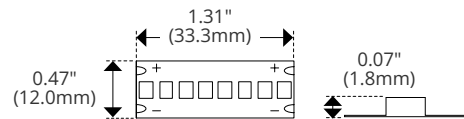


Linear

Uniform Static White (Indoor)



Diode	2835
Width	0.47" (12.0mm)
Cut Intervals	1.31" (33.3mm)
Height	0.07" (1.8mm)



Kelvix reserves the right to update the product specifications at any time. To maintain warranty, field modifications must follow approved Kelvix installation instruction.
 Conforms to ANSI/UL Standard 2108
 Certified to CAN/CSA Standard C22.2 No. 250.2

Fixture Type _____
 Project Name _____
 Location _____



Lens Details

Easy Spec 202 Static White

TYPE

White



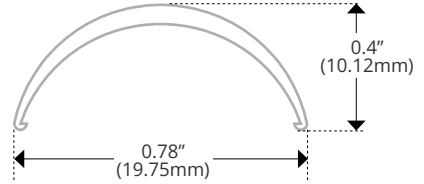
DESCRIPTION

CH-LNS-202-WH-2M

Material	Polycarbonate
Transmission	57%
Width	0.78in (19.75mm)
Height	0.4in (10.12mm)

BEAM ANGLE

DIMENSIONS



Frosted



CH-LNS-202-FR-2M

Material	Polycarbonate
Transmission	~80%
Width	0.78in (19.75mm)
Height	0.4in (10.12mm)

Clear



CH-LNS-202-CL-2M

Material	Polycarbonate
Transmission	~95%
Width	0.78in (19.75mm)
Height	0.4in (10.12mm)

Kelvix reserves the right to update the product specifications at any time. To maintain warranty, field modifications must follow approved Kelvix installation instruction.
 Conforms to ANSI/UL Standard 2108
 Certified to CAN/CSA Standard C22.2 No. 250.2

Fixture Type _____

Project Name _____

Location _____

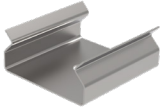


Mounting Details

Easy Spec 202 Static White

TYPE

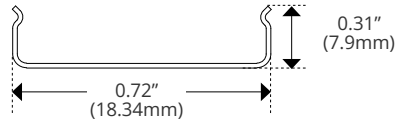
Metal Clip



DESCRIPTION

	CH-202-PAK-M
Length	0.79in (20.11mm)
Width	0.72in (18.34mm)
Height	0.31in (7.9mm)
Height w/ Product	0.78in (19.88mm)

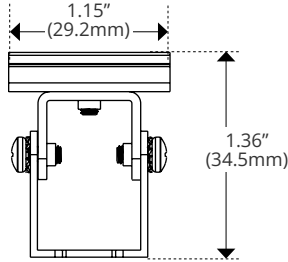
DIMENSIONS



Pivot Clip



	CH-202-PAK-PV
Width	1.15" (29.2mm)
Height	1.36" (34.7mm)



Fixture Type _____
 Project Name _____
 Location _____



Lumen and Power Details

Easy Spec 202 Static White

DELIVERED LUMENS (1 AND 2-STEP)

CCT	Lens	100 (lm/ft)	200 (lm/ft)	300 (lm/ft)	400 (lm/ft)	500 (lm/ft)	750 (lm/ft)
1800K	White	43	98	153	202	231	319
2200K		53	119	186	245	280	376
2400K		54	123	192	254	290	398
2700K		56	128	199	262	300	420
3000K		61	139	216	285	326	437
3500K		72	165	258	339	388	477
4000K		65	147	229	302	345	472
5000K		65	149	231	305	349	481
6500K		66	150	234	308	352	486

1800K	Frosted	53	122	190	250	287	398
2200K		65	148	230	303	347	469
2400K		67	153	238	314	359	496
2700K		69	158	246	324	371	524
3000K		76	172	268	352	404	545
3500K		90	205	319	420	480	594
4000K		80	182	284	374	427	589
5000K		81	184	287	378	432	600
6500K		81	186	289	381	436	605

1800K	Clear	64	147	228	301	345	479
2200K		78	178	276	365	417	564
2400K		81	184	287	378	432	597
2700K		83	191	296	390	447	630
3000K		91	207	322	424	486	656
3500K		108	246	384	505	577	715
4000K		96	219	341	450	514	708
5000K		97	222	345	454	519	721
6500K		98	223	348	459	524	728

POWER DETAILS (1 AND 2-STEP)

1 and 2 Step	Output (lm/ft)					
	100	200	300	400	500	750
Wattage (W/ft)	0.8	1.7	2.5	3.6	4.0	6.4
Max Run Length (ft)	46	36	29	24	20	16
White (lm/W)	76	82	86	79	81	68
Frosted (lm/W)	95	101	107	98	101	85
Clear (lm/W)	114	121	129	118	121	102

TM30 DATA (1 AND 2-STEP)

400 lm/ft		CRI	Rf	Rg	R9
1 and 2-Step	1800K	95.1	93.6	101.8	79
	2200K	94.7	94	104.1	96
	2400K	96.3	95.2	102.7	95
	2700K	95.9	94.4	101.6	95
	3000K	96.8	94.4	102.1	97
	3500K	95.9	92.8	101	97
	4000K	97.6	93.6	101.1	96
	5000K	97.5	94.3	102.4	97
	6500K	97.2	93.4	101.3	92

Kelvix reserves the right to update the product specifications at any time. To maintain warranty, field modifications must follow approved Kelvix installation instruction.

Conforms to ANSI/UL Standard 2108

Certified to CAN/CSA Standard C22.2 No. 250.2

Fixture Type _____

Project Name _____

Location _____



Lumen and Power Details

Easy Spec 202 Static White

DELIVERED LUMENS (3-STEP)

CCT	Lens	100 (lm/ft)	200 (lm/ft)	300 (lm/ft)	400 (lm/ft)	500 (lm/ft)	750 (lm/ft)	1000 (lm/ft)	1250 (lm/ft)	1500 (lm/ft)
1800K	White	47	83	123	171	196	244	314	412	482
2200K		66	119	177	247	282	389	499	655	767
2400K		71	128	189	263	301	419	538	707	827
2700K		74	133	197	274	313	411	527	692	809
3000K		75	135	199	277	317	437	561	736	861
3500K		75	136	201	280	320	459	589	773	904
4000K		78	140	207	288	329	467	600	788	921
5000K		81	145	214	299	342	476	611	802	938
6500K		79	143	210	294	336	463	595	780	913

1800K	Frosted	58	103	153	212	243	305	392	514	601
2200K		82	148	219	305	349	485	622	817	956
2400K		88	158	234	326	373	523	671	881	1031
2700K		92	165	244	340	388	512	657	863	1009
3000K		92	167	246	342	392	544	700	918	1074
3500K		93	168	249	346	396	572	734	963	1127
4000K		96	173	256	356	408	583	748	982	1148
5000K		100	180	265	370	424	593	762	1000	1170
6500K		98	176	261	363	415	577	741	972	1138

1800K	Clear	70	124	184	255	293	366	471	618	723
2200K		99	178	264	368	420	583	749	982	1149
2400K		105	191	282	392	448	629	807	1060	1240
2700K		110	198	293	409	467	616	791	1038	1214
3000K		111	201	296	412	472	655	842	1104	1292
3500K		112	202	299	416	476	688	883	1159	1356
4000K		115	208	308	429	491	701	900	1182	1382
5000K		121	217	320	446	510	713	917	1203	1407
6500K		118	212	314	438	500	694	892	1170	1369

POWER DETAILS (3-STEP)

3 Step	Output (lm/ft)								
	100	200	300	400	500	750	1000	1250	1500
Wattage (W/ft)	0.7	1.3	2.0	2.6	3.4	4.4	5.6	7.2	8.6
Max Run Length (ft)	46	30	25	22	19	17	14	11	11
White (lm/W)	107	104	99	106	93	99	100	102	100
Frosted (lm/W)	132	128	123	132	115	124	125	127	125
Clear (lm/W)	159	154	148	159	139	149	150	153	150

TM30 DATA (3-STEP)

1250 lm/ft		CRI	Rf	Rg	R9
3-Step	1800K	93.2	91.9	99.2	64
	2200K	93.6	91.2	105.2	79
	2400K	94.1	89.7	106.1	72
	2700K	94.1	92.3	105.5	94
	3000K	94.6	92.5	103.8	86
	3500K	96.7	92	100.2	80
	4000K	97.5	92	100	91
	5000K	89.7	90	103.3	49
	6500K	89	87.4	101	46

Kelvix reserves the right to update the product specifications at any time. To maintain warranty, field modifications must follow approved Kelvix installation instruction.

Conforms to ANSI/UL Standard 2108

Certified to CAN/CSA Standard C22.2 No. 250.2

Fixture Type _____

Project Name _____

Location _____



Power Supply Details

Easy Spec

TYPE

DESCRIPTION

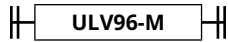
ULV-36



Length	4.50" (114.3mm)
Width	2.31" (58.6mm)
Height	1.37" (34.7mm)

Voltage	24V DC
Compatible Protocols	ELV, MLV, 0-10V, Resistive, PWM
Dim Capability	5%
Wattage	36W

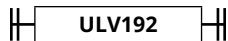
ULV-96-M



Length	10.75" (273.0mm)
Width	3.00" (75.8mm)
Height	1.57" (40.0mm)

Voltage	24V DC
Compatible Protocols	ELV, MLV, 0-10V, Triac
Dim Capability	0.1%
Wattage	96W

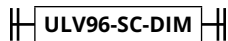
ULV-192



Length	11.37" (288.7mm)
Width	3.37" (85.5mm)
Height	1.37" (34.7mm)

Voltage	24V DC
Compatible Protocols	ELV, MLV, 0-10V, Resistive, PWM
Dim Capability	1%
Wattage	2x 96W

ULV-96-SC-DIM



Length	14.96" (380.0mm)
Width	3.03" (77.0mm)
Height	2.24" (57.0mm)

Voltage	24V DC
Compatible Protocols	MLV, 0-10V
Dim Capability	0.1%
Wattage	96W

Kelvix reserves the right to update the product specifications at any time. To maintain warranty, field modifications must follow approved Kelvix installation instruction.
 Conforms to ANSI/UL Standard 2108
 Certified to CAN/CSA Standard C22.2 No. 250.2

Fixture Type _____
 Project Name _____
 Location _____