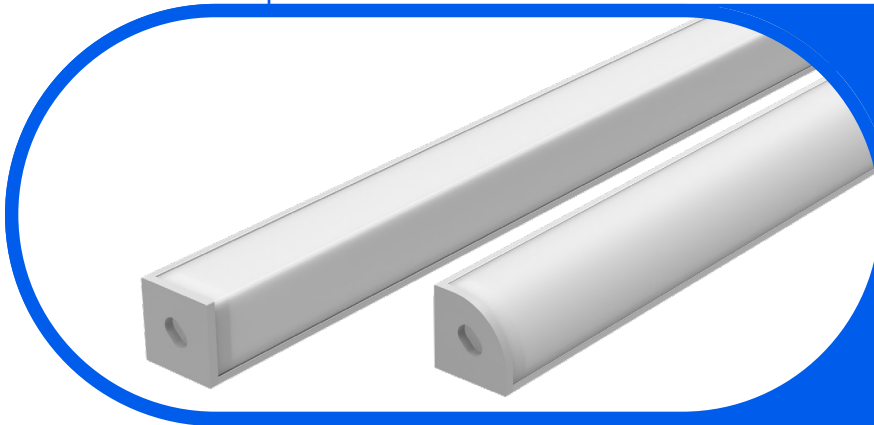




Complete Specification Sheet

Easy Spec 006 Static White

EASY
SPEC



Easy Spec 006 Static White (Indoor)

Easy Spec™: components to easily specify a fixture



Specifications

Category	Easy Spec
Series	Easy 006
Family	Static White
Watts per Foot	0.7 - 14.4 W
IP Rating	IP20
CRI	90+, 95+
Diodes	U2835
Binning Tolerance	1 SDCM, 2 SDCM, 3 SDCM
CCT Options	1800K - 6500K
Input Voltage	24V DC
Width	0.62in (16.0mm)
Height	0.62in (16.0mm)
Max Run Length	7 - 46ft (2.1 - 14m)
Material	Aluminum
Beam Angle	100.6°, 102.1°, 106.1°, 110.4°, 112.8°, 115.3°
Lumens per Foot	63 - 1475 lm/ft
Storage Temp.	-4°F (-20°C) to 158°F (70°C)
Operating Temp.	-4°F (-20°C) to 140°F (60°C)
Dimming Options	Triac, ELV, 0-10V, DMX

Features

- Field Serviceable Light Source & Engine
- Dimmable to 0.1%
- 5/10 Year Warranty for LED Strip / Drivers
- Optional Assembly Available For Any Fixtures Up to 2m (6.56ft)
- Diode Imaging Free

Description

The Easy Spec series is designed for convenience and versatility, allowing you to quickly specify our standard Tape and Channel pairs with just one part number. Products arrive as individual components, providing your installation team the advantage of customizing lengths and configurations on-site for an optimal fit. Assembly services are available upon request.

Kelvix reserves the right to update the product specifications at any time. To maintain warranty, field modifications must follow approved Kelvix installation instruction.
 Conforms to ANSI/UL Standard 2108
 Certified to CAN/CSA Standard C22.2 No. 250.2

Fixture Type _____

Project Name _____

Location _____



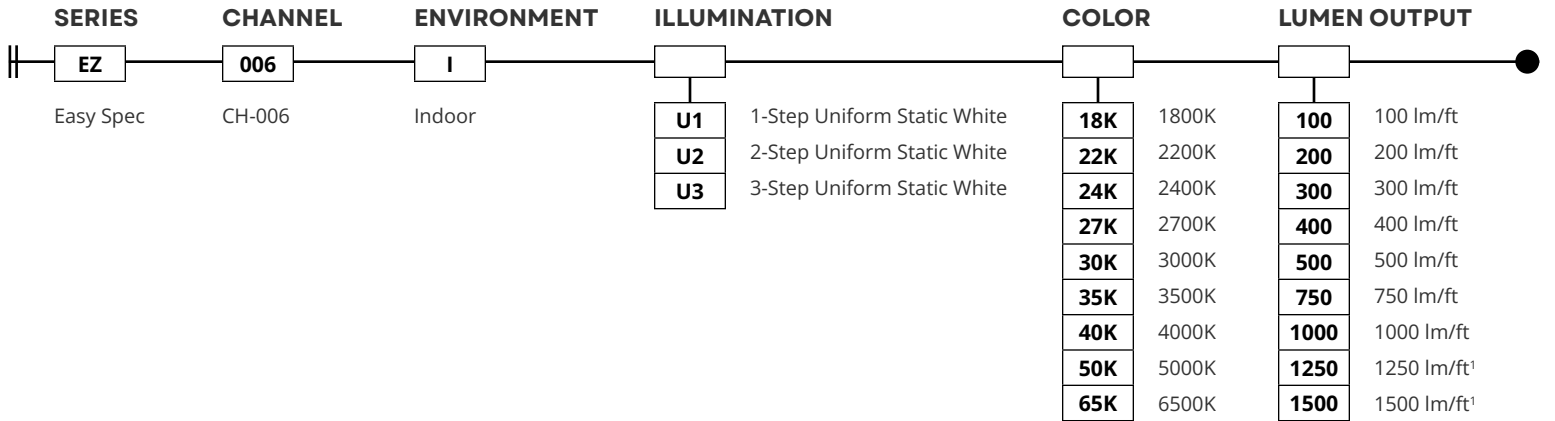
Product Code Builder

Easy Spec 006 Static White

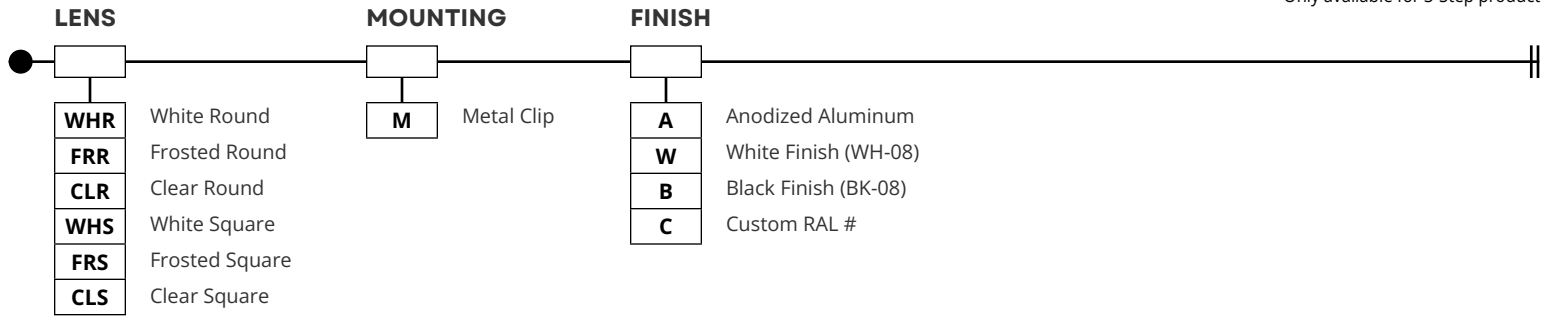
EASY SPEC

Product Code Builder

Example: EZ-006-I-U1-18K-100-C-P-A



¹Only available for 3-Step product



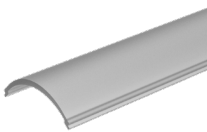
LENS

White Round



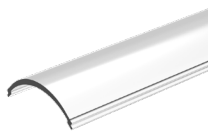
WHR

Frosted Round



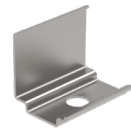
FRR

Clear Round



CLR

Metal Clip



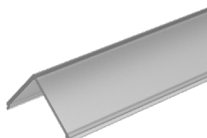
M

White Square



WHS

Frosted Square



FRS

Clear Square



CLS

MOUNTING

FINISH

Anodized Aluminum



White Finish (WH-08)



Black Finish (BK-08)



Custom RAL #



Kelvix reserves the right to update the product specifications at any time. To maintain warranty, field modifications must follow approved Kelvix installation instruction.
 Conforms to ANSI/UL Standard 2108
 Certified to CAN/CSA Standard C22.2 No. 250.2

Fixture Type _____

Project Name _____

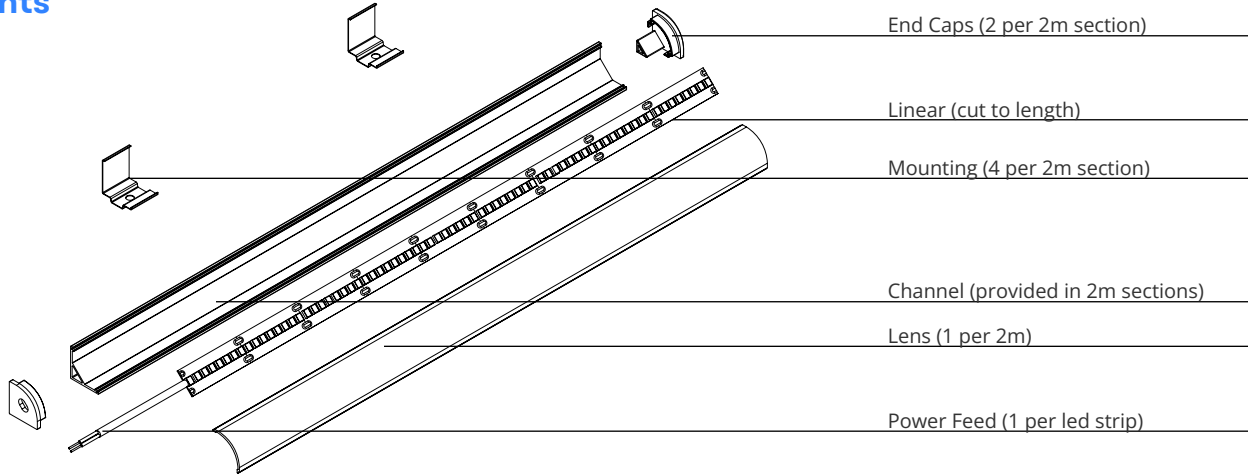
Location _____



Assembly Details

Easy Spec 006 Static White

Components



Channel

TYPE

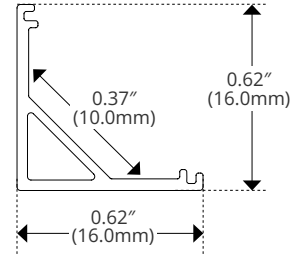
006



DESCRIPTION

CH-006-2M	
Width	0.62in (16.0mm)
Internal Width	0.37in (10.0mm)
Height	0.62in (16.0mm)

DIMENSIONS

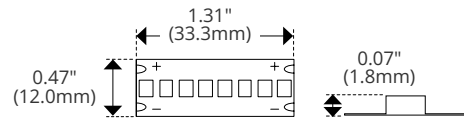


Linear

Uniform Static White (Indoor)



Diode	2835
Width	0.47" (12.0mm)
Cut Intervals	1.31" (33.3mm)
Height	0.07" (1.8mm)



Kelvix reserves the right to update the product specifications at any time. To maintain warranty, field modifications must follow approved Kelvix installation instruction.
 Conforms to ANSI/UL Standard 2108
 Certified to CAN/CSA Standard C22.2 No. 250.2

Fixture Type _____

Project Name _____

Location _____



Lens Details

Easy Spec 006 Static White

TYPE

DESCRIPTION

BEAM ANGLE

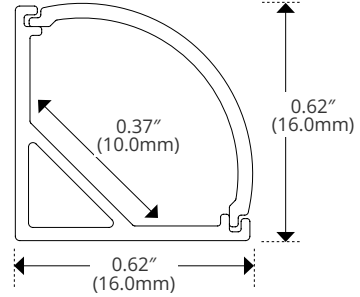
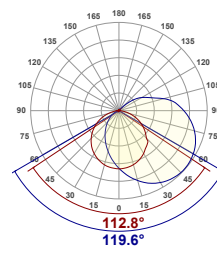
DIMENSIONS

White Round

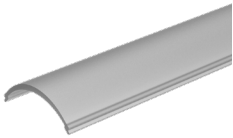


WHR

Material	Polycarbonate
Transmission	59%
Width	0.62" (15.8mm)
Height	0.62" (15.8mm)

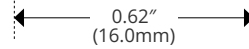
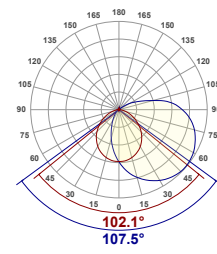


Frosted Round

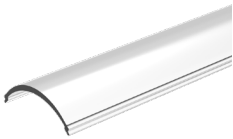


FRR

Material	Polycarbonate
Transmission	93%
Width	0.62" (15.8mm)
Height	0.62" (15.8mm)

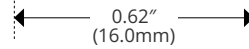
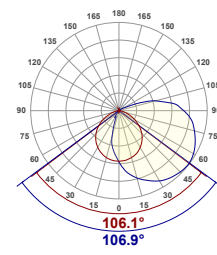


Clear Round



CLR

Material	Polycarbonate
Transmission	95%
Width	0.62" (15.8mm)
Height	0.62" (15.8mm)

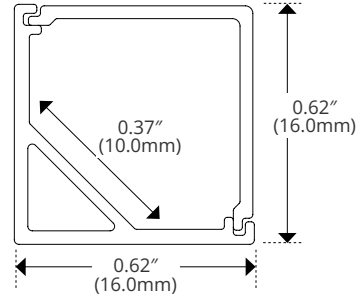
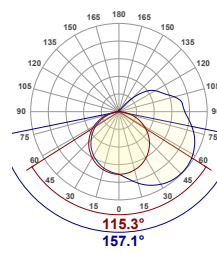


White Square

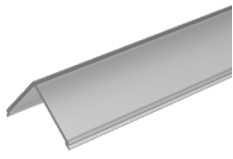


WHS

Material	Polycarbonate
Transmission	59%
Width	0.62" (15.8mm)
Height	0.62" (15.8mm)

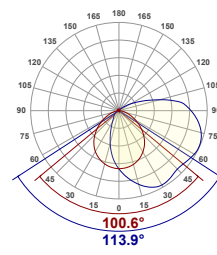


Frosted Square



FRS

Material	Polycarbonate
Transmission	93%
Width	0.62" (15.8mm)
Height	0.62" (15.8mm)

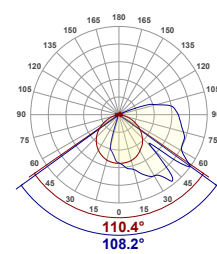


Clear Square



CLS

Material	Polycarbonate
Transmission	95%
Width	0.62" (15.8mm)
Height	0.62" (15.8mm)



Kelvix reserves the right to update the product specifications at any time. To maintain warranty, field modifications must follow approved Kelvix installation instruction.
 Conforms to ANSI/UL Standard 2108
 Certified to CAN/CSA Standard C22.2 No. 250.2

Fixture Type _____

Project Name _____

Location _____

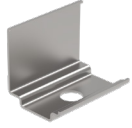


Mounting Details

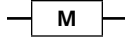
Easy Spec 006 Static White

TYPE

Metal Clip

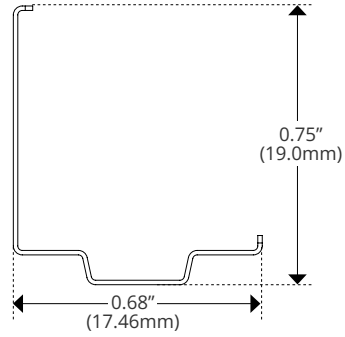


DESCRIPTION



Length	0.66in (16.86mm)
Width	0.68in (17.46mm)
Height	0.75in (19.0mm)
Height w/ Product	0.75in (19.0mm)

DIMENSIONS





Lumen and Power Details

Easy Spec 006 Static White

DELIVERED LUMENS (1 AND 2-STEP)

CCT	Lens	100 (lm/ft)	200 (lm/ft)	300 (lm/ft)	400 (lm/ft)	500 (lm/ft)	750 (lm/ft)	1000 (lm/ft)
1800K	White Round	41	93	145	190	218	300	380
2200K		50	113	175	231	264	353	448
2400K		51	116	181	239	274	373	474
2700K		53	121	187	247	283	394	500
3000K		58	131	204	268	307	410	521
3500K		68	156	243	320	365	447	568
4000K		61	139	216	285	325	443	563
5000K		61	140	218	288	329	451	573
6500K		62	141	220	290	332	456	578
1800K	Frosted Round	63	145	226	298	341	469	595
2200K		78	176	273	361	413	552	702
2400K		80	182	283	374	428	584	742
2700K		83	188	293	386	442	617	783
3000K		90	204	319	419	480	642	816
3500K		107	243	379	499	571	700	889
4000K		95	217	338	445	509	693	881
5000K		96	219	341	449	514	706	897
6500K		97	221	344	454	519	713	905
1800K	Clear Round	65	149	232	305	349	483	613
2200K		79	180	280	370	423	569	723
2400K		82	186	290	383	438	602	764
2700K		85	193	300	396	453	635	806
3000K		92	209	326	430	492	661	840
3500K		109	249	389	512	585	721	916
4000K		97	222	346	456	521	714	907
5000K		98	225	349	460	526	727	924
6500K		99	226	353	465	531	734	932
1800K	White Square	40	92	143	188	215	298	379
2200K		49	111	173	228	261	352	446
2400K		51	115	179	236	270	372	472
2700K		52	119	185	244	279	392	498
3000K		57	129	201	265	303	408	519
3500K		67	154	240	315	361	445	566
4000K		60	137	213	281	321	441	560
5000K		61	138	215	284	324	449	571
6500K		61	140	217	286	327	454	576

Kelvix reserves the right to update the product specifications at any time. To maintain warranty, field modifications must follow approved Kelvix installation instruction.
 Conforms to ANSI/UL Standard 2108
 Certified to CAN/CSA Standard C22.2 No. 250.2

Fixture Type _____
 Project Name _____
 Location _____



Lumen and Power Details

Easy Spec 006 Static White

DELIVERED LUMENS (1 AND 2-STEP)

CCT	Lens	100 (lm/ft)	200 (lm/ft)	300 (lm/ft)	400 (lm/ft)	500 (lm/ft)	750 (lm/ft)	1000 (lm/ft)
1800K	Frosted Square	63	144	224	295	338	471	597
2200K		77	174	271	358	409	554	704
2400K		79	180	281	370	424	587	745
2700K		82	187	290	383	438	619	785
3000K		89	203	316	416	476	644	819
3500K		106	241	376	495	566	703	892
4000K		94	215	335	442	504	696	884
5000K		95	217	338	446	509	709	900
6500K		96	219	342	450	514	716	908
1800K	Clear Square	65	149	232	305	350	483	613
2200K		79	180	280	370	423	569	722
2400K		82	186	291	383	438	602	764
2700K		85	193	300	396	453	635	806
3000K		92	209	327	430	492	661	840
3500K		109	250	389	512	585	721	915
4000K		97	222	346	456	521	713	906
5000K		98	225	350	461	527	727	923
6500K		99	226	353	465	532	734	932

POWER DETAILS (1 AND 2-STEP)

1 and 2 Step	Output (lm/ft)						
	100	200	300	400	500	750	1000
Wattage (W/ft)	0.8	1.7	2.5	3.6	4.0	6.4	8.5
Max Run Length (ft)	46	36	29	24	20	16	12
White Round (lm/W)	71	76	80	74	76	64	61
Frosted Round (lm/W)	112	119	126	116	119	101	96
Clear Round (lm/W)	115	123	131	119	123	103	99
White Square (lm/W)	72	77	82	75	77	64	61
Frosted Square (lm/W)	113	120	127	116	120	100	96
Clear Square (lm/W)	115	123	131	119	123	103	99

TM30 DATA (1 AND 2-STEP)

1 and 2-Step	400 lm/ft	CRI	Rf	Rg	R9
	1800K	95.1	93.6	101.8	79
2200K	94.7	94	104.1	96	
2400K	96.3	95.2	102.7	95	
2700K	95.9	94.4	101.6	95	
3000K	96.8	94.4	102.1	97	
3500K	95.9	92.8	101	97	
4000K	97.6	93.6	101.1	96	
5000K	97.5	94.3	102.4	97	
6500K	97.2	93.4	101.3	92	

Kelvix reserves the right to update the product specifications at any time. To maintain warranty, field modifications must follow approved Kelvix installation instruction.
 Conforms to ANSI/UL Standard 2108
 Certified to CAN/CSA Standard C22.2 No. 250.2

Fixture Type _____

Project Name _____

Location _____



Lumen and Power Details

Easy Spec 006 Static White

DELIVERED LUMENS (3-STEP)

CCT	Lens	100 (lm/ft)	200 (lm/ft)	300 (lm/ft)	400 (lm/ft)	500 (lm/ft)	750 (lm/ft)	1000 (lm/ft)	1250 (lm/ft)	1500 (lm/ft)
1800K	White Round	44	78	116	162	185	229	295	387	452
2200K		62	113	167	233	266	365	468	614	719
2400K		67	121	178	248	284	393	505	663	776
2700K		70	125	186	259	295	385	495	649	759
3000K		70	127	187	261	299	410	526	691	808
3500K		71	128	189	263	301	430	552	725	848
4000K		73	132	195	271	310	438	563	739	864
5000K		76	137	202	282	323	446	573	753	880
6500K		75	134	198	277	316	434	558	732	856
1800K	Frosted Round	69	123	182	253	289	359	461	605	708
2200K		98	176	261	364	415	571	733	962	1125
2400K		104	188	278	388	444	616	790	1037	1214
2700K		109	196	290	404	462	603	774	1016	1188
3000K		110	198	293	408	467	641	824	1081	1265
3500K		111	200	296	412	471	673	864	1134	1327
4000K		114	206	304	424	485	686	881	1157	1353
5000K		119	214	316	441	504	698	897	1178	1378
6500K		117	210	310	433	494	679	873	1145	1340
1800K	Clear Round	71	126	186	259	296	370	475	623	729
2200K		100	180	267	373	425	588	755	991	1159
2400K		107	193	285	397	455	634	814	1069	1251
2700K		112	201	297	414	473	621	797	1046	1224
3000K		113	203	300	418	478	660	849	1113	1303
3500K		114	205	303	422	483	693	890	1169	1367
4000K		117	211	312	435	497	707	908	1191	1393
5000K		122	220	324	452	517	719	924	1214	1419
6500K		120	215	318	443	507	700	899	1180	1381
1800K	White Square	44	77	115	159	183	228	294	385	450
2200K		62	111	165	229	262	363	466	612	716
2400K		66	119	176	245	280	392	503	660	773
2700K		69	124	183	255	292	384	493	647	756
3000K		69	125	185	257	295	408	524	688	805
3500K		70	126	187	260	297	428	550	722	845
4000K		72	130	192	268	306	437	561	736	861
5000K		75	135	199	278	318	445	571	750	877
6500K		74	133	196	273	312	432	556	729	853

Kelvix reserves the right to update the product specifications at any time. To maintain warranty, field modifications must follow approved Kelvix installation instruction.
 Conforms to ANSI/UL Standard 2108
 Certified to CAN/CSA Standard C22.2 No. 250.2

Fixture Type _____
 Project Name _____
 Location _____



Lumen and Power Details

Easy Spec 006 Static White

DELIVERED LUMENS (3-STEP)

CCT	Lens	100 (lm/ft)	200 (lm/ft)	300 (lm/ft)	400 (lm/ft)	500 (lm/ft)	750 (lm/ft)	1000 (lm/ft)	1250 (lm/ft)	1500 (lm/ft)
1800K	Frosted Square	69	122	180	251	287	360	463	607	710
2200K		97	174	259	361	412	573	736	965	1129
2400K		103	187	276	385	440	618	793	1041	1219
2700K		108	194	288	401	458	605	777	1020	1192
3000K		109	197	290	404	463	643	827	1085	1269
3500K		110	198	294	409	467	676	868	1139	1332
4000K		113	204	302	421	481	689	885	1161	1358
5000K		118	213	313	437	500	701	901	1182	1383
6500K		116	208	308	429	490	682	876	1149	1345
1800K	Clear Square	71	126	186	259	297	369	475	623	728
2200K		100	180	268	373	426	588	754	990	1158
2400K		107	193	285	397	455	634	814	1068	1250
2700K		112	201	297	415	474	621	797	1046	1223
3000K		113	203	300	418	479	660	848	1113	1302
3500K		114	205	303	422	483	693	890	1168	1366
4000K		117	211	312	435	497	706	907	1191	1392
5000K		122	220	324	452	517	719	924	1213	1418
6500K		120	215	318	444	507	699	899	1179	1380

POWER DETAILS (3-STEP)

3 Step	Output (lm/ft)								
	100	200	300	400	500	750	1000	1250	1500
Wattage (W/ft)	0.7	1.3	2.0	2.6	3.4	4.4	5.6	7.2	8.6
Max Run Length (ft)	46	30	25	22	19	17	14	11	11
White Round (lm/W)	99	96	92	99	87	93	94	96	94
Frosted Round (lm/W)	156	151	145	156	136	146	148	151	148
Clear Round (lm/W)	161	156	150	161	141	150	151	155	151
White Square (lm/W)	101	98	94	100	88	93	94	96	94
Frosted Square (lm/W)	157	153	146	157	137	146	147	150	147
Clear Square (lm/W)	161	156	150	161	141	150	152	155	151

TM30 DATA (3-STEP)

3-Step	1250 lm/ft	CRI	Rf	Rg	R9
	1800K	93.2	91.9	99.2	64
2200K	93.6	91.2	105.2	79	
2400K	94.1	89.7	106.1	72	
2700K	94.1	92.3	105.5	94	
3000K	94.6	92.5	103.8	86	
3500K	96.7	92	100.2	80	
4000K	97.5	92	100	91	
5000K	89.7	90	103.3	49	
6500K	89	87.4	101	46	

Kelvix reserves the right to update the product specifications at any time. To maintain warranty, field modifications must follow approved Kelvix installation instruction.
 Conforms to ANSI/UL Standard 2108
 Certified to CAN/CSA Standard C22.2 No. 250.2

Fixture Type _____

Project Name _____

Location _____



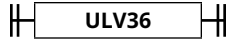
Power Supply Details

Easy Spec

TYPE

DESCRIPTION

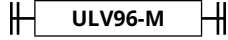
ULV-36



Length	4.50" (114.3mm)
Width	2.31" (58.6mm)
Height	1.37" (34.7mm)

Voltage	24V DC
Compatible Protocols	ELV, MLV, 0-10V, Resistive, PWM
Dim Capability	5%
Wattage	36W

ULV-96-M



Length	10.75" (273.0mm)
Width	3.00" (75.8mm)
Height	1.57" (40.0mm)

Voltage	24V DC
Compatible Protocols	ELV, MLV, 0-10V, Triac
Dim Capability	0.1%
Wattage	96W

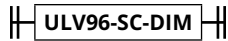
ULV-192



Length	11.37" (288.7mm)
Width	3.37" (85.5mm)
Height	1.37" (34.7mm)

Voltage	24V DC
Compatible Protocols	ELV, MLV, 0-10V, Resistive, PWM
Dim Capability	1%
Wattage	2x 96W

ULV-96-SC-DIM



Length	14.96" (380.0mm)
Width	3.03" (77.0mm)
Height	2.24" (57.0mm)

Voltage	24V DC
Compatible Protocols	MLV, 0-10V
Dim Capability	0.1%
Wattage	96W

Kelvix reserves the right to update the product specifications at any time. To maintain warranty, field modifications must follow approved Kelvix installation instruction.
 Conforms to ANSI/UL Standard 2108
 Certified to CAN/CSA Standard C22.2 No. 250.2

Fixture Type _____

Project Name _____

Location _____