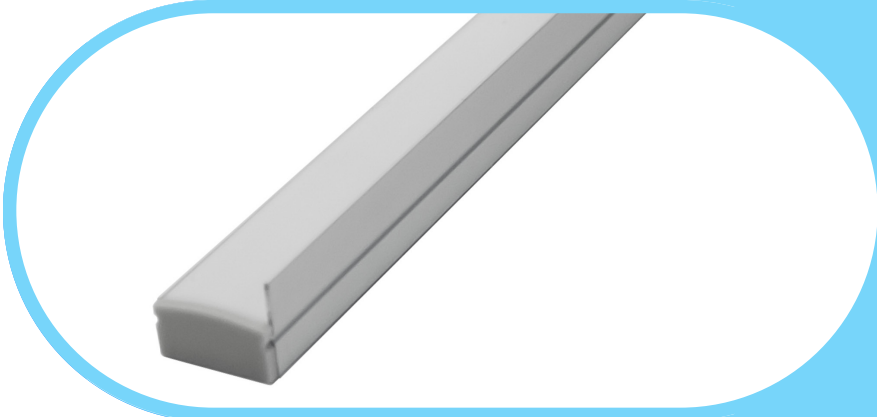




Complete Specification Sheet

CH-506-A



Channel 506-A

Extruded Aluminum Mounting Channel

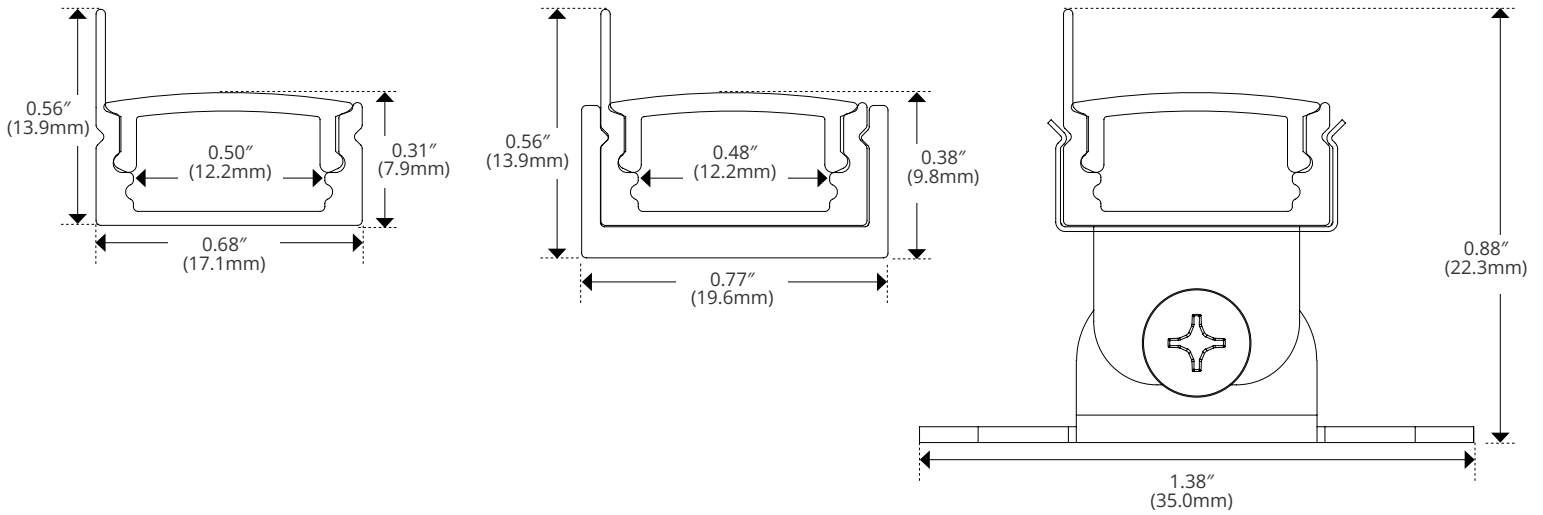
Specifications

Category	Rigid Channel
Series	Adjustable / Surface
Family	CH-506-A
Width	0.68in (17.1mm)
Internal Width	0.50in (12.2mm)
Height	0.56in (13.9mm)
Material	Aluminum

Features

- Available in 2 Meter Sections
- Extruded Aluminum Construction
- Anodized Matte Finish
- Consult Factory for Custom Lengths & Finishes

Dimensions



Kelvix reserves the right to update the product specifications at any time. To maintain warranty, field modifications must follow approved Kelvix installation instruction.

Fixture Type _____

Project Name _____

Location _____

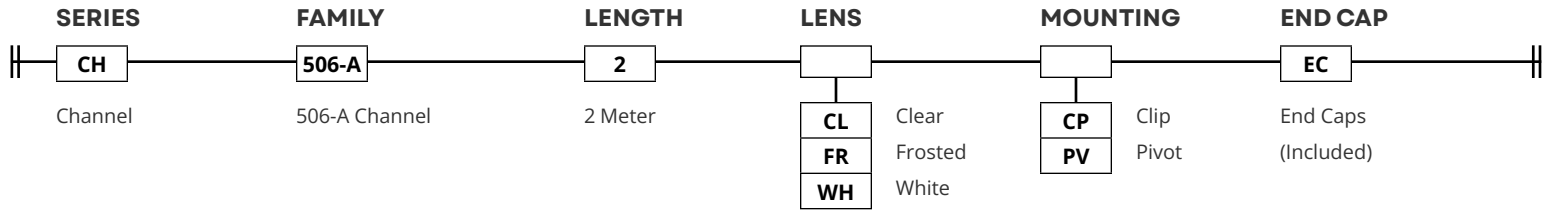



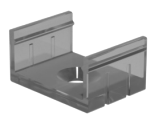
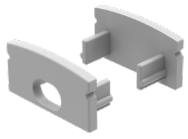



Product Code Builder

CH-506-A

Product Code Builder

Example: CH-506-A-2-WH-CP-EC



LENS	TRANSMISSION	MOUNTING	END CAP						
<p>Clear</p>  <p>CH-LNS-A-CL-2M</p>	<table border="1"> <tr> <td>CL</td> <td>99%</td> </tr> <tr> <td>FR</td> <td>80%</td> </tr> <tr> <td>WH</td> <td>57%</td> </tr> </table>	CL	99%	FR	80%	WH	57%	<p>Clip</p>  <p>CH-502-PAK-CP</p>	<p>End Cap</p>  <p>CH-502-PAK</p>
CL	99%								
FR	80%								
WH	57%								
<p>Frosted</p>  <p>CH-LNS-A-FR-2M</p>		<p>Pivot</p>  <p>CH-502-PAK-PV</p>							
<p>White</p>  <p>CH-LNS-A-WH-2M</p>									

Kelvix reserves the right to update the product specifications at any time. To maintain warranty, field modifications must follow approved Kelvix installation instruction.

Fixture Type _____

Project Name _____

Location _____