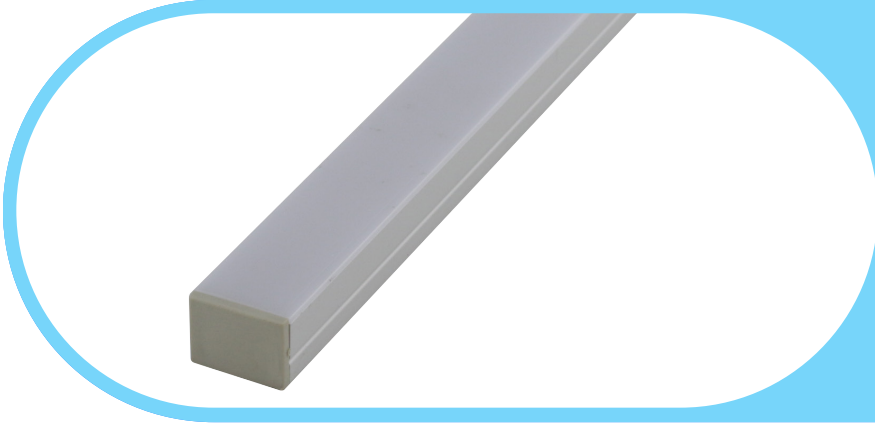




Complete Specification Sheet

CH-409



Channel 409

Extruded Aluminum Mounting Channel

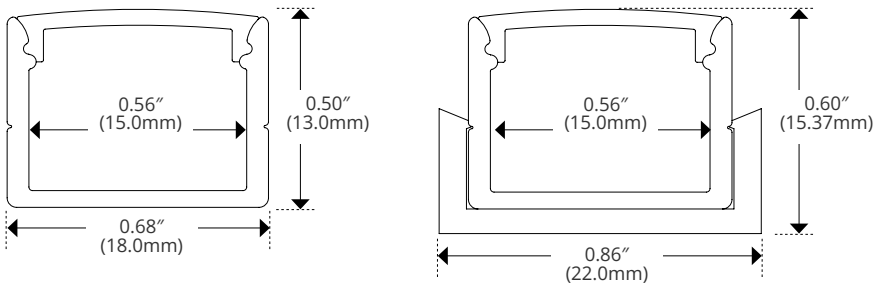
Specifications

Category	Rigid Channel
Series	Surface
Family	CH-409
Width	0.68in (18.0mm)
Internal Width	0.56" (15.0mm)
Height	0.50in (13.0mm)
Material	Aluminum

Features

- Available in 2 Meter Sections
- Extruded Aluminum Construction
- Anodized Matte Finish
- Consult Factory for Custom Lengths & Finishes

Dimensions



Kelvix reserves the right to update the product specifications at any time. To maintain warranty, field modifications must follow approved Kelvix installation instruction.

Fixture Type _____

Project Name _____

Location _____

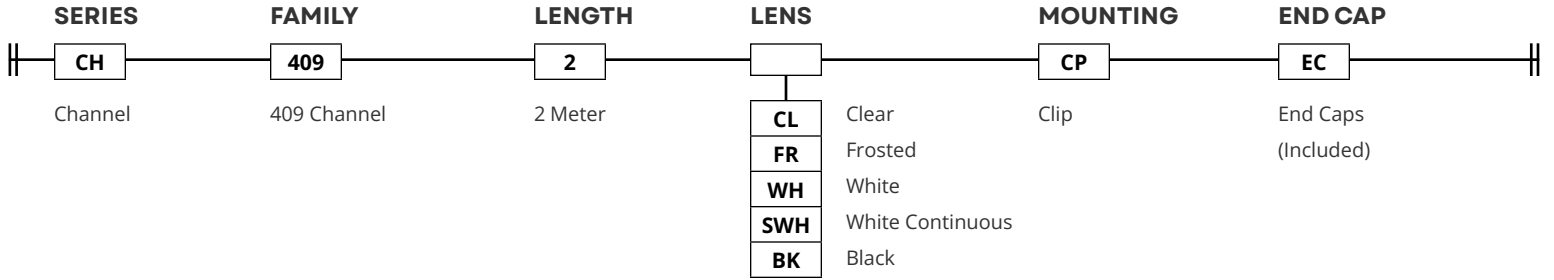


Product Code Builder

CH-409

Product Code Builder

Example: CH-409-2-WH-CP-EC



LENS

Clear



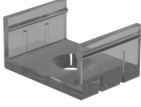
CH-LNS-409-CL-2M

TRANSMISSION

CL	96%
FR	85%
WH	53%
SWH	53%
BK	12%

MOUNTING


Clip



CH-409-PAK-P


ACCESSORIES SOLD SEPARATELY

Louver



CH-409-LV-BK-1FT

Frosted



CH-LNS-409-FR-2M

Unit Number	CH-409-LV-BK-1FT
UGR	<13
Length	12.05" (306.03mm)
Width	0.96" (24.38mm)
Height	1.06" (26.92mm)
Installed Height w/ Clip	1.1" (27.68mm)

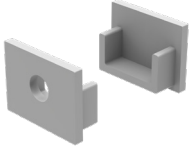
White / Continuous



CH-LNS-409-WH-2M

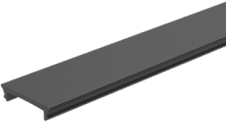
END CAP

End Cap



CH-EC-409

Black



CH-LNS-409-BK-2M

Kelvix reserves the right to update the product specifications at any time. To maintain warranty, field modifications must follow approved Kelvix installation instruction.

Fixture Type _____

Project Name _____

Location _____