



Complete Specification Sheet

CH-076

Channel 076

Extruded Aluminum Mounting Channel



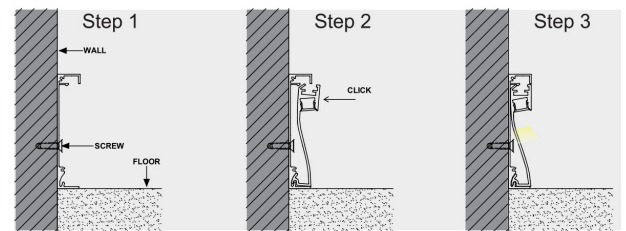
Specifications

Category	Rigid Channel
Series	Recessed
Family	CH-076
Width	0.62" (16.0mm)
Internal Width	0.43" (10.3mm)
Height	3.12" (80.0mm)
Material	Aluminum

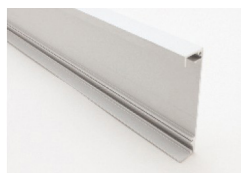
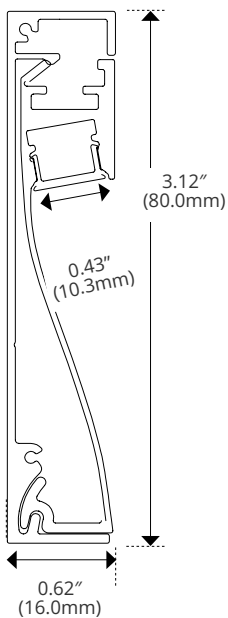
Features

- Available in 2 Meter Sections
- Extruded Aluminum Construction
- Anodized Matte Finish
- Consult Factory for Custom Lengths & Finishes
- Mitered Corner Available Upon Request

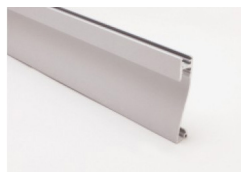
Easy Installation



Dimensions



Profile 1



Profile 2

Kelvix reserves the right to update the product specifications at any time. To maintain warranty, field modifications must follow approved Kelvix installation instruction.

Fixture Type _____

Project Name _____

Location _____

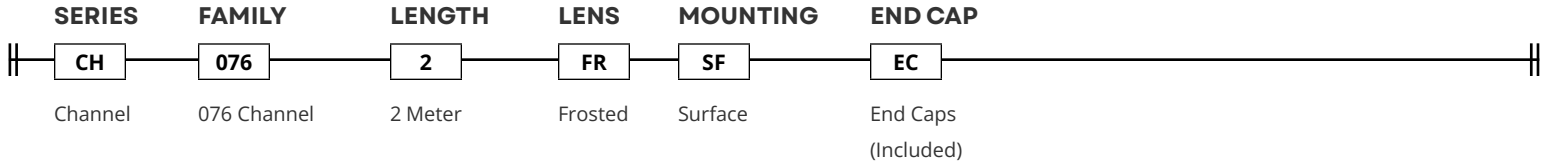


Product Code Builder

CH-076

Product Code Builder

Example: CH-076-2-FR-SF-EC



LENS

Frosted



CH-LNS-076-FR-2M

END CAP

End Cap



CH-EC-076

Kelvix reserves the right to update the product specifications at any time. To maintain warranty, field modifications must follow approved Kelvix installation instruction.

Fixture Type _____

Project Name _____

Location _____