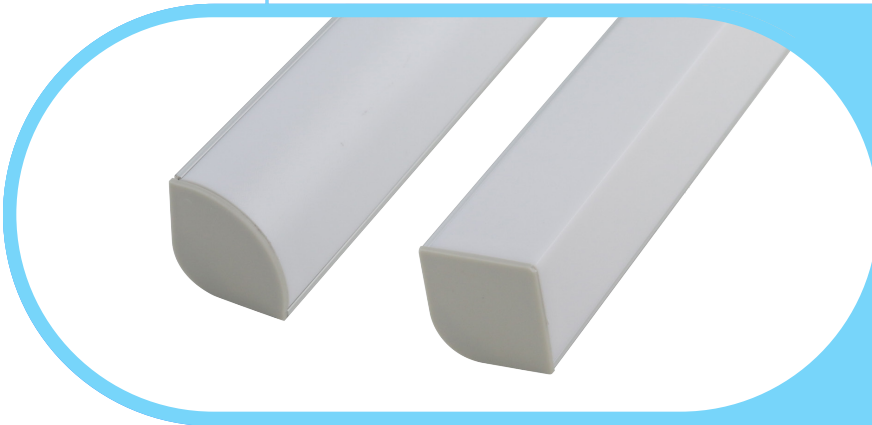




# Complete Specification Sheet

## CH-016

CHANNEL



## Channel 016

Extruded Aluminum Mounting Channel

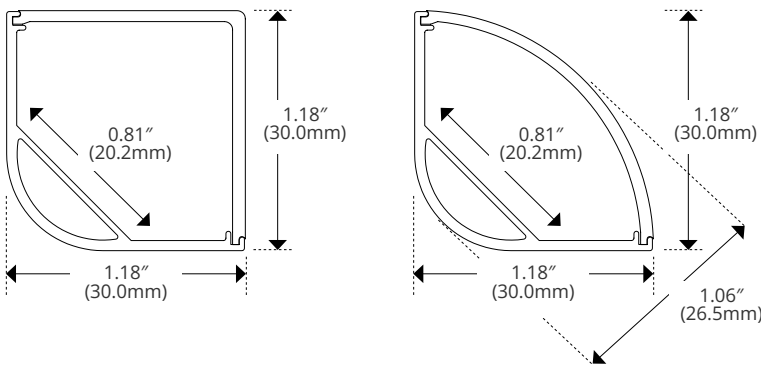
### Specifications

<b>Category</b>	Rigid Channel
<b>Series</b>	Angled
<b>Family</b>	CH-016
<b>Width</b>	1.18in (30.0mm)
<b>Internal Width</b>	0.81in (20.2mm)
<b>Height</b>	1.18in (30.0mm)

### Features

- Available in 2 Meter Sections
- Extruded Aluminum Construction
- Anodized Matte Finish
- Consult Factory for Custom Lengths & Finishes
- For Indoor Use Only

### Dimensions



Kelvix reserves the right to update the product specifications at any time. To maintain warranty, field modifications must follow approved Kelvix installation instruction.

Fixture Type \_\_\_\_\_

Project Name \_\_\_\_\_

Location \_\_\_\_\_

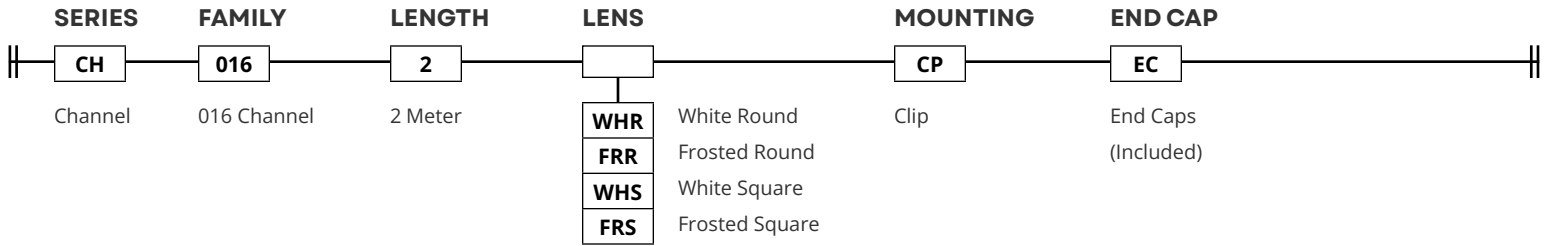



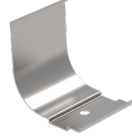


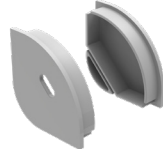
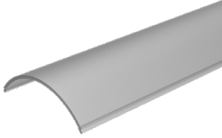
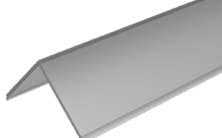
# Product Code Builder

## CH-016

### Product Code Builder

Example: CH-016-2-WHR-CP-EC



LENS	TRANSMISSION	MOUNTING	END CAP								
<b>White Round</b>    CH-LNS-016-WHR-2M	<table border="1"> <tr><td><b>WHR</b></td><td>38%</td></tr> <tr><td><b>FRR</b></td><td>39%</td></tr> <tr><td><b>WHS</b></td><td>88%</td></tr> <tr><td><b>FRS</b></td><td>77%</td></tr> </table>	<b>WHR</b>	38%	<b>FRR</b>	39%	<b>WHS</b>	88%	<b>FRS</b>	77%	<b>Clip</b>    CH-016S-PAK-M	<b>Square End Cap</b>    CH-016S-PAK-M
<b>WHR</b>	38%										
<b>FRR</b>	39%										
<b>WHS</b>	88%										
<b>FRS</b>	77%										
<b>White Square</b>    CH-LNS-016-WHS-2M			<b>Round End Cap</b>    CH-016S-PAK-M								
<b>Frosted Round</b>    CH-LNS-016-FRR-2M											
<b>Frosted Square</b>    CH-LNS-016-FRS-2M											

Kelvix reserves the right to update the product specifications at any time. To maintain warranty, field modifications must follow approved Kelvix installation instruction.

Fixture Type \_\_\_\_\_

Project Name \_\_\_\_\_

Location \_\_\_\_\_