



Complete Specification Sheet

CH-013-C

CH-013-C

Extruded Aluminum Mounting Channel



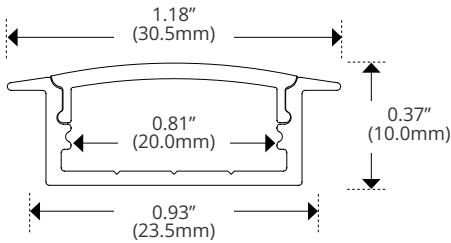
Specifications

Category	Rigid Channel
Series	Recessed
Family	CH-013-C
Width	1.18in (30.5mm)
Internal Width	0.81in (20.0mm)
Height	0.37in (10.0mm)
Material	Aluminum

Features

- Available in 2 Meter Sections
- Extruded Aluminum Construction
- Anodized Matte Finish
- Consult Factory for Custom Lengths & Finishes

Dimensions



Kelvix reserves the right to update the product specifications at any time. To maintain warranty, field modifications must follow approved Kelvix installation instruction.

Fixture Type _____

Project Name _____

Location _____

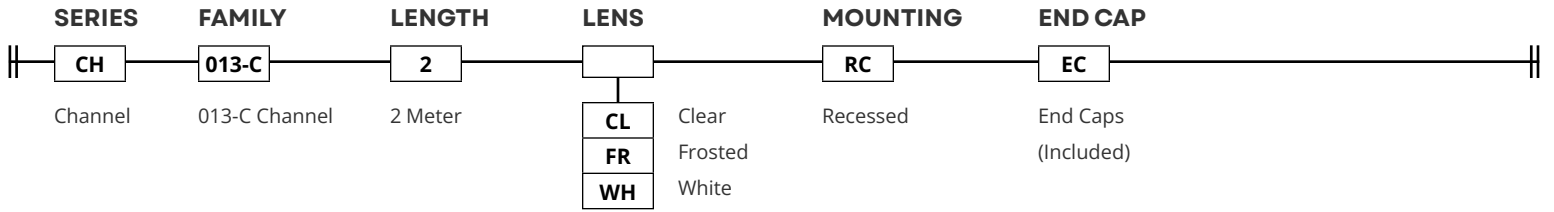


Product Code Builder

CH-013-C

Product Code Builder

Example: CH-013-C-2-WH-CP-EC



LENS

Clear



CH-LNS-AC-CL-2M

Frosted



CH-LNS-AC-FR-2M

White



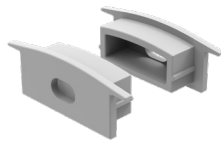
CH-LNS-AC-WH-2M

TRANSMISSION

CL	99%
FR	80%
WH	57%

END CAP

End Cap



CH-EC-013

Kelvix reserves the right to update the product specifications at any time. To maintain warranty, field modifications must follow approved Kelvix installation instruction.

Fixture Type _____

Project Name _____

Location _____