

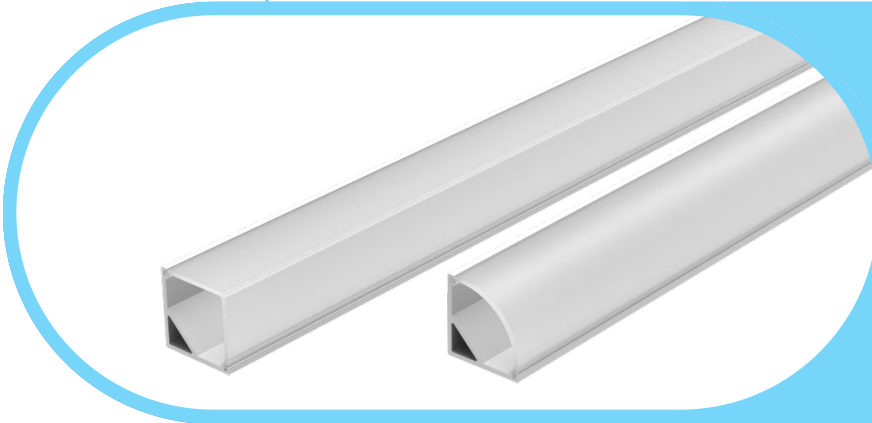


Complete Specification Sheet

CH-006

Channel 006

Extruded Aluminum Mounting Channel



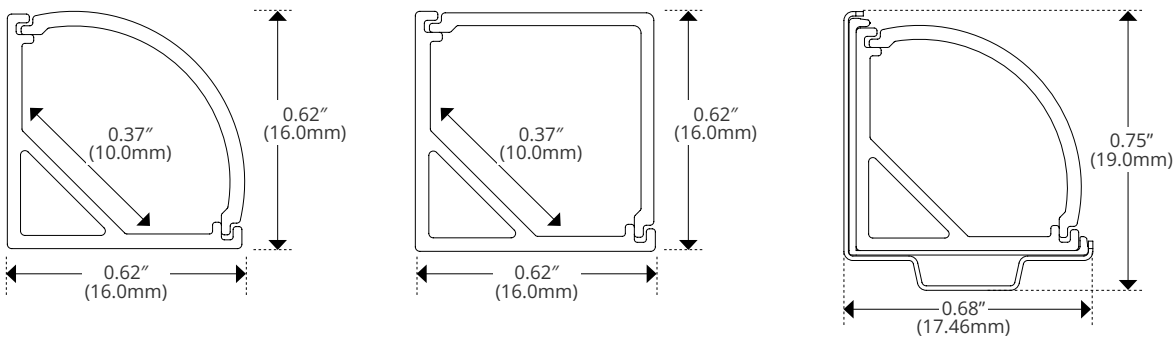
Specifications

Category	Rigid Channel
Series	Angled
Family	CH-006
Width	0.62in (16.0mm)
Internal Width	0.37in (10.0mm)
Height	0.62in (16.0mm)
Material	Aluminum

Features

- Available in 2 Meter Sections
- Extruded Aluminum Construction
- Anodized Matte Finish
- Consult Factory for Custom Lengths & Finishes
- For Indoor Use Only

Dimensions



Kelvix reserves the right to update the product specifications at any time. To maintain warranty, field modifications must follow approved Kelvix installation instruction.

Fixture Type _____

Project Name _____

Location _____

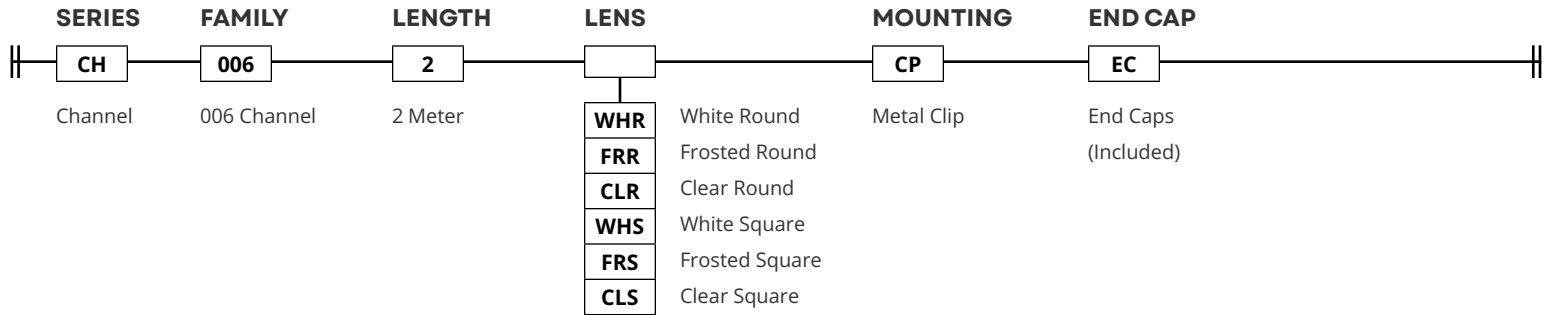


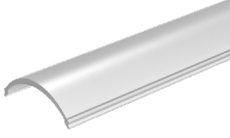

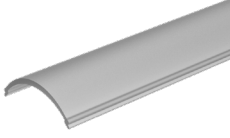
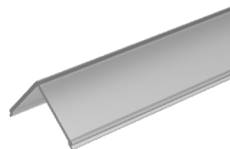


Product Code Builder

CH-006

Product Code Builder

Example: CH-006-2-WHR-CP-EC

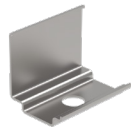


LENS	
<p>White Round</p>  <p>CH-LNS-006-WHR-2M</p>	<p>White Square</p>  <p>CH-LNS-006-WHS-2M</p>
<p>Frosted Round</p>  <p>CH-LNS-006-FRR-2M</p>	<p>Frosted Square</p>  <p>CH-LNS-006-FRS-2M</p>
<p>Clear Round</p>  <p>CH-LNS-006-CLR-2M</p>	<p>Clear Square</p>  <p>CH-LNS-006-CLS-2M</p>

TRANSMISSION	
WHR	59%
FRR	93%
CHR	95%
WHS	59%
FRS	93%
CHS	95%

MOUNTING

Metal Clip



CH-006-PAK-M

END CAP

Square End Cap



CH-006S-PAK-P

Round End Cap



CH-006R-PAK-P

Kelvix reserves the right to update the product specifications at any time. To maintain warranty, field modifications must follow approved Kelvix installation instruction.

Fixture Type _____

Project Name _____

Location _____