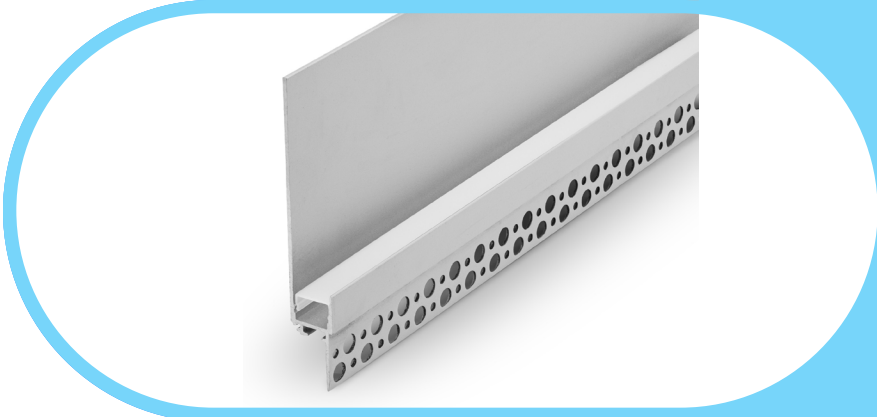




# Complete Specification Sheet

## CH-0013



# Channel 0013

Extruded Aluminum Mounting Channel

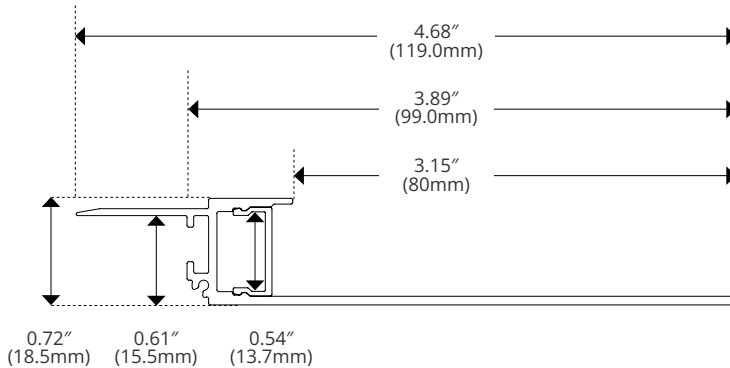
### Specifications

Category	Rigid Channel
Series	Trimless / Mud-In
Family	CH-0013
Width	4.68in (119.0mm)
Internal Width	0.54in (13.7mm)
Height	0.72in (18.5mm)
Material	Aluminum

### Features

- Create perfectly flush, seamless lines of light without modifying the structure behind the sheet rock.
- Available in 2 Meter Sections
- Extruded Aluminum Construction
- Anodized Matte Finish
- Straight and Angled Connectors Available to Create Long, Continuous Runs
- Drywall Mud-in Mounting for a Seamless Recessed Look
- Consult Factory for Custom Lengths and Finishes
- Available In Various Finish Colors

### Dimensions



Kelvix reserves the right to update the product specifications at any time. To maintain warranty, field modifications must follow approved Kelvix installation instruction.

Fixture Type \_\_\_\_\_

Project Name \_\_\_\_\_

Location \_\_\_\_\_

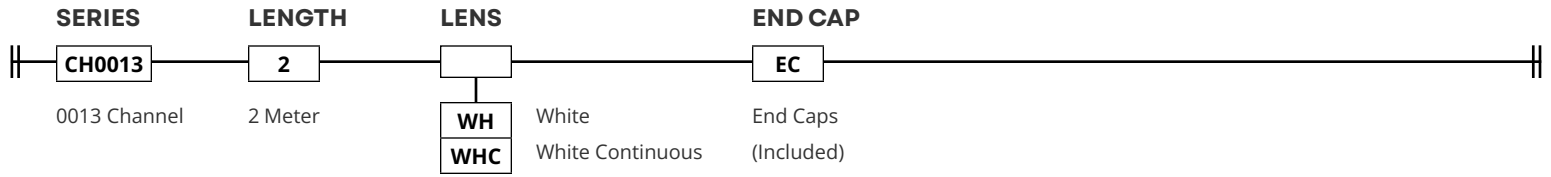



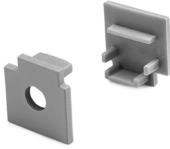








# Product Code Builder

## CH-0013

### Product Code Builder

Example: CH013-2-WH-EC



LENS	TRANSMISSION	END CAP	ACCESSORIES SOLD SEPARATELY					
<p><b>White</b></p>  <p>CH-LNS-AD-WH-2M</p>	<table border="1"> <tr> <td>WH</td> <td>70%</td> </tr> <tr> <td>WHC</td> <td>70%</td> </tr> </table>	WH	70%	WHC	70%	<p><b>End Cap</b></p>  <p>CH-ECR-0013</p>	<p><b>90° Horizontal Connector</b></p>  <p>CH-CON-01-90H</p>	<p><b>135° Vertical Connector</b></p>  <p>CH-CON-01-135V</p>
WH	70%							
WHC	70%							
<p><b>White Continuous</b></p>  <p>CH-LNS-AD-WH-CO</p>			<p><b>90° Vertical Connector</b></p>  <p>CH-CON-01-90V</p>	<p><b>180° Connector</b></p>  <p>CH-CON-01-180</p>				
<p><b>Disposable Cover</b></p>  <p>Used to protect interior LED area during Installation</p>			<p><b>120° Horizontal Connector</b></p>  <p>CH-CON-01-120H</p>					
			<p><b>135° Horizontal Connector</b></p>  <p>CH-CON-01-135H</p>					

Kelvix reserves the right to update the product specifications at any time. To maintain warranty, field modifications must follow approved Kelvix installation instruction.

Fixture Type \_\_\_\_\_

Project Name \_\_\_\_\_

Location \_\_\_\_\_