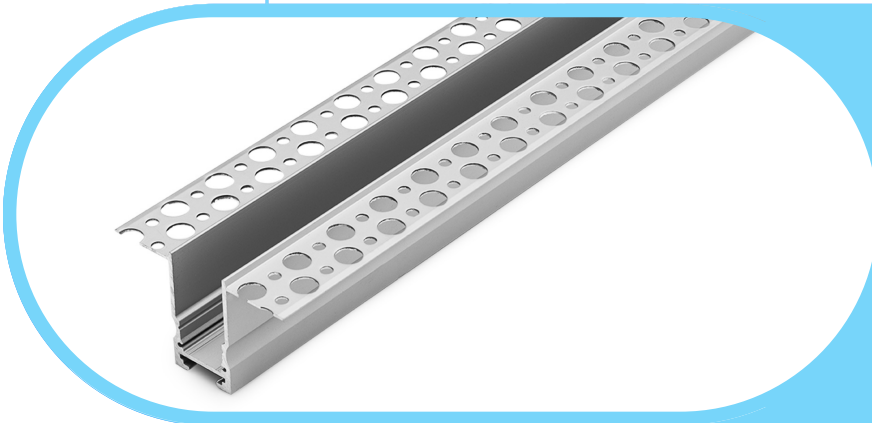




# Complete Specification Sheet

## CH-0006



# Channel 0006

Extruded Aluminum Mounting Channel

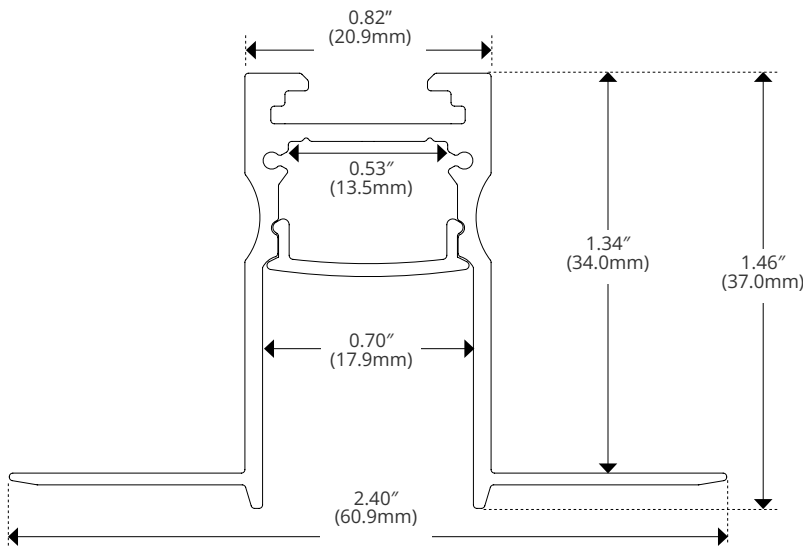
### Specifications

|                       |                   |
|-----------------------|-------------------|
| <b>Category</b>       | Rigid Channel     |
| <b>Series</b>         | Trimless / Mud-In |
| <b>Family</b>         | CH-0006           |
| <b>Width</b>          | 2.40in (60.9mm)   |
| <b>Internal Width</b> | 0.53in (13.5mm)   |
| <b>Height</b>         | 1.46" (37.0mm)    |
| <b>Material</b>       | Aluminum          |

### Features

- Create perfectly flush, seamless lines of light without modifying the structure behind the sheet rock.
- Available in 2 Meter Sections
- Extruded Aluminum Construction
- Anodized Matte Finish
- Straight and Angled Connectors Available to Create Long, Continuous Runs
- Drywall Mud-in Mounting for a Seamless Recessed Look
- Consult Factory for Custom Lengths and Finishes
- Available In Various Finish Colors

### Dimensions



Kelvix reserves the right to update the product specifications at any time. To maintain warranty, field modifications must follow approved Kelvix installation instruction.

Fixture Type \_\_\_\_\_

Project Name \_\_\_\_\_

Location \_\_\_\_\_

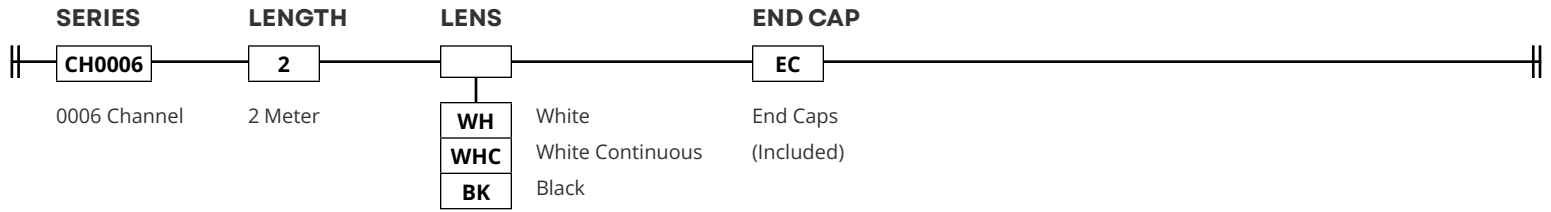


# Product Code Builder

CH-0006


## Product Code Builder

Example: CH006-2-WH-EC



### LENS | TRANSMISSION | END CAP | ACCESSORIES SOLD SEPARATELY


**WH**



CH-LNS-AF-WH-2M


|            |     |
|------------|-----|
| <b>WH</b>  | 71% |
| <b>WHC</b> | 71% |
| <b>BK</b>  | 20% |

**EC**




CH-EC-0006

**90° Horizontal Connector**




CH-CON-03-90H

**WHC**



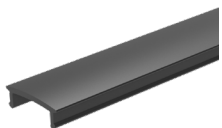
CH-LNS-AF-WH-CO

**90° Vertical Connector**




CH-CON-02-90V

**BK**



CH-LNS-AF-BK-2M

**120° Connector**



CH-CON-02-120H

**Disposable Cover**



Used to protect interior LED area during Installation

**180° Connector**



CH-CON-02-180

Kelvix reserves the right to update the product specifications at any time. To maintain warranty, field modifications must follow approved Kelvix installation instruction.

Fixture Type \_\_\_\_\_

Project Name \_\_\_\_\_

Location \_\_\_\_\_