



Complete Specification Sheet

CH-0003

Channel 0003

Extruded Aluminum Mounting Channel



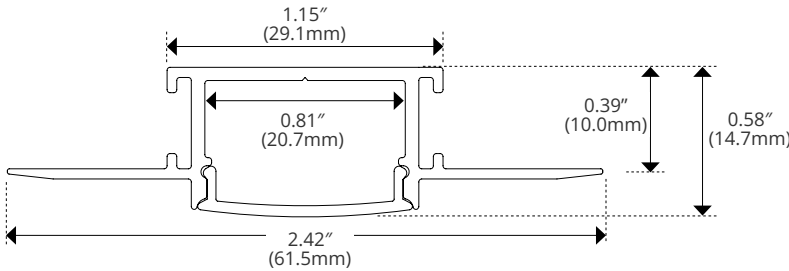
Specifications

Category	Rigid Channel
Series	Trimless / Mud-In
Family	CH-0003
Width	2.42in (61.5mm)
Internal Width	0.81in (20.7mm)
Height	0.58in (14.7mm)
Material	Aluminum

Features

- Create perfectly flush, seamless lines of light without modifying the structure behind the sheet rock.
- Available in 2 Meter Sections
- Extruded Aluminum Construction
- Anodized Matte Finish
- Straight and Angled Connectors Available to Create Long, Continuous Runs
- Drywall Mud-in Mounting for a Seamless Recessed Look
- Consult Factory for Custom Lengths and Finishes
- Available In Various Finish Colors

Dimensions



Kelvix reserves the right to update the product specifications at any time. To maintain warranty, field modifications must follow approved Kelvix installation instruction.

Fixture Type _____

Project Name _____

Location _____

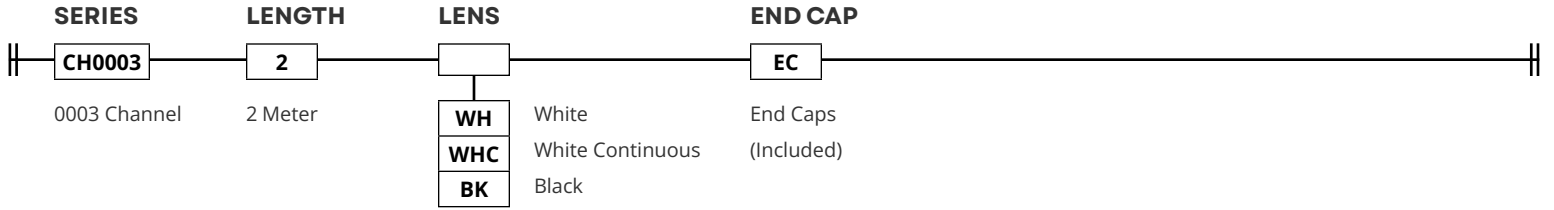


Product Code Builder

CH-0003

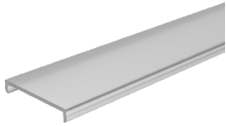
Product Code Builder

Example: CH003-2-WH-EC



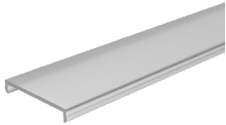
LENS

WH



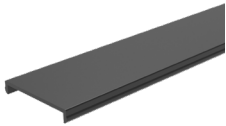
CH-LNS-AC-WH-2M

WHC



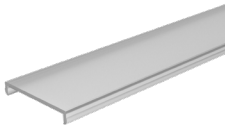
CH-LNS-AC-WH-CO

BK



CH-LNS-AC-BK-2M

Disposable Cover



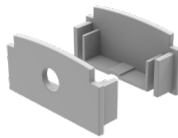
Used to protect interior LED area during Installation

TRANSMISSION

WH	51%
WHC	51%
BK	19%

END CAP

EC



CH-EC-0003

ACCESSORIES SOLD SEPARATELY

90° Horizontal Connector



CH-CON-03-90H

90° Vertical Connector



CH-CON-02-90V

120° Connector

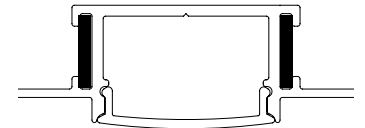


CH-CON-02-120H

180° Connector



CH-CON-02-180



To ensure stability, we recommend utilizing two connectors per channel junction for use in both of the exterior connector slots.

Kelvix reserves the right to update the product specifications at any time. To maintain warranty, field modifications must follow approved Kelvix installation instruction.

Fixture Type _____

Project Name _____

Location _____