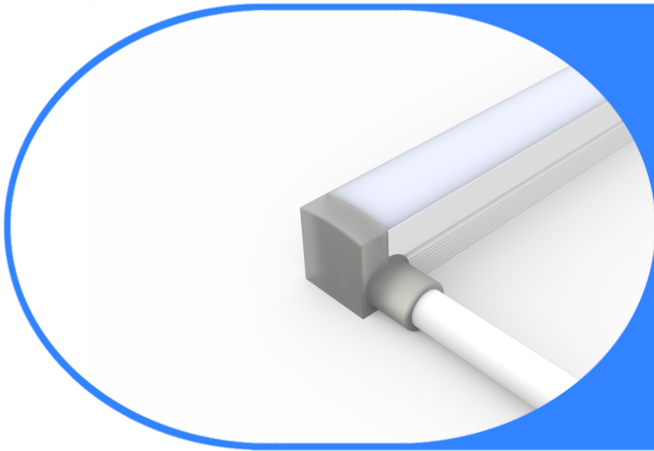




Fixture Type _____

Project Name _____

Location _____



EnduraWave Narrow Static White

0.79" x 0.79" Narrow View Flexible Neon

Features

- Strong Tensile Strength
- 3D Bending Flexibility
- Universal Dimming with ULV96-M
- 50,000 Hour Life
- Silicone Jacket with IP67 or IP68 Options
- UL-Listed for Indoor and Outdoor Use
- For Use with 24V Power Supplies

Specifications

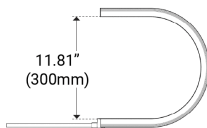
Series	ENN-WL
Temp/Color	2700K - 6500K
Input Voltage	24VDC
Beam Angle	111°
Watts per Foot	4.51 W
Lumens per Foot	234 - 252 lm
Dimming Options	Triac, ELV, 0-10V, DMX
Width	0.79in (20mm)
Height	0.79in (20mm)
Cut Intervals	0.66in (16.7mm)
Max Run Length	16.41ft (5m)
Material	Silicone
Operating Temp.	-20 - 60 °C
Storage Temp.	-20 - 70 °C

Bend Direction

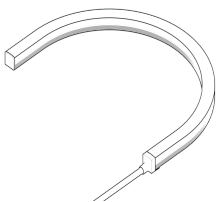
Vertical



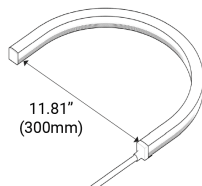
Vertical Bend Diameter



Horizontal

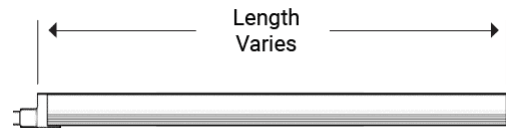


Horizontal Bend Diameter

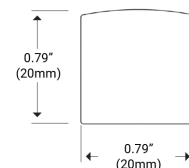


Dimensions

Side



Front





Product Code Builder

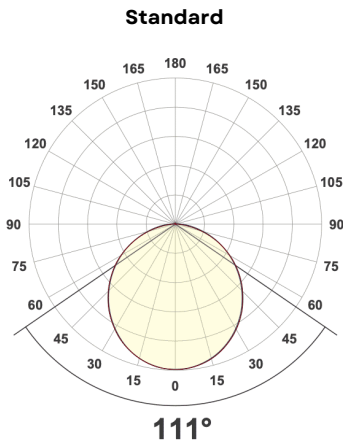
SERIES	CCT		VOLTAGE		FEED TYPE		IP RATING		LEAD LENGTH	
<input type="text"/>	<input type="text"/>	<input type="text"/>	<input type="text"/>	<input type="text"/>	<input type="text"/>	<input type="text"/>	<input type="text"/>	<input type="text"/>	<input type="text"/>	<input type="text"/>
ENN-WL	27K	2700K	24V	24VDC	E	End feed	67	IP67	1	1ft
	30K	3000K			B	Bottom feed	68	IP68	3	3ft
	35K	3500K			SL	Side left			6	6ft
	40K	4000K			SR	Side right			10	10ft
	50K	5000K							16	16ft
	65K	6500K								

FIXTURE LENGTH

xx Fixture Length

Example: ENN-WL-27K-24V-E67-1-10

Photometric



Leader Cables

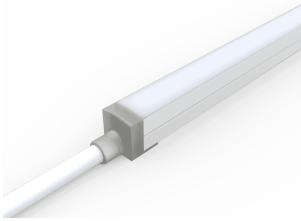
Description	Ordering Code	Length	Wire Gauge
2 Conductor Leader Cable (1ft)	1	1 ft	2 x 18AWG
2 Conductor Leader Cable (3ft)	3	3 ft	2 x 18AWG
2 Conductor Leader Cable (6ft)	6	6 ft	2 x 18AWG
2 Conductor Leader Cable (10ft)	10	10 ft	2 x 18AWG
2 Conductor Leader Cable (16ft)	16	16 ft	2 x 18AWG

Series Data

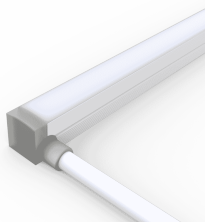
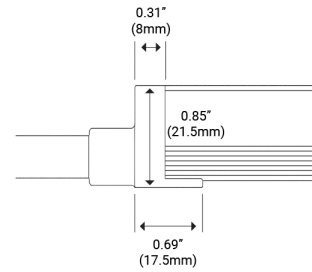
Temp/Color Ordering Code	CRI	Lumens per Foot	Input Voltage	W/ft
27K	90+	212 lm	24VDC	4.51 W
30K		237 lm		4.51 W
35K		256 lm		4.51 W
40K		253 lm		4.51 W
50K		252 lm		4.51 W
65K		250 lm		4.51 W



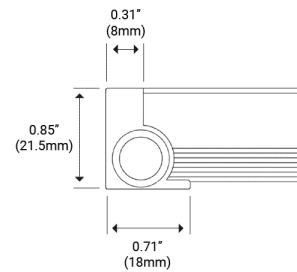
IP67 Injection Molded Feed Points / End



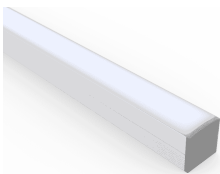
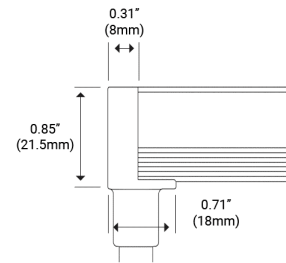
Type	End Feed (E)
Length Adder	8 mm
Length	17.5 mm
Width	21.5 mm
Height	21.5 mm



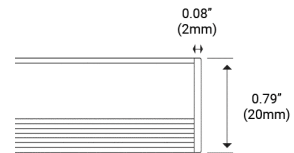
Type	Side Feed Left (SL) / Side Feed Right (SR)
Length Adder	8 mm
Length	18 mm
Width	21.5 mm
Height	21.5 mm



Type	Back Feed (B)
Length Adder	8 mm
Length	18 mm
Width	21.5 mm
Height	21.5 mm

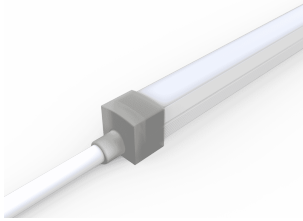


Type	End Cap (C)
Length Adder	2 mm
Length	2 mm
Width	20 mm
Height	20 mm

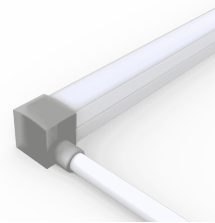
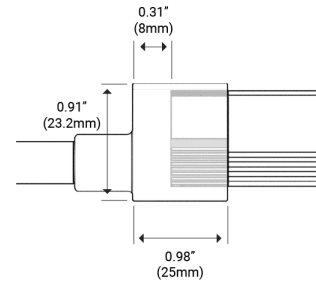




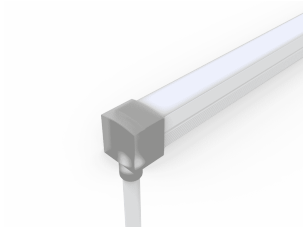
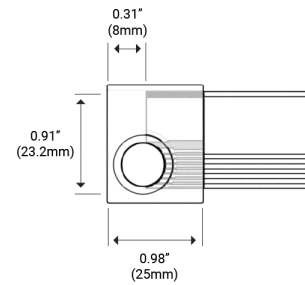
IP68 Injection Molded Feed Points / End



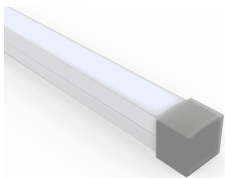
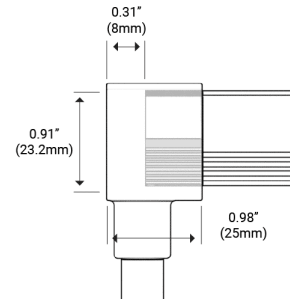
Type	End Feed (E)
Length Adder	8 mm
Length	25 mm
Width	23.2 mm
Height	23.2 mm



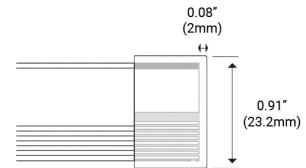
Type	Side Feed Left (SL) / Side Feed Right (SR)
Length Adder	8 mm
Length	25 mm
Width	23.2 mm
Height	23.2 mm



Type	Back Feed (B)
Length Adder	8 mm
Length	25 mm
Width	23.2 mm
Height	23.2 mm

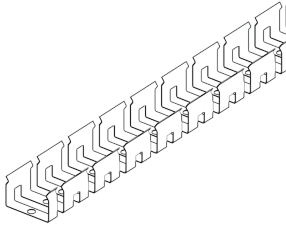


Type	End Cap (C)
Length Adder	2 mm
Length	20 mm
Width	23.2 mm
Height	23.2 mm

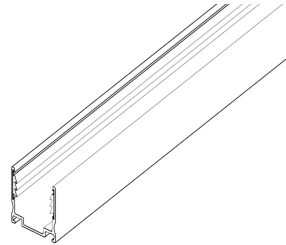
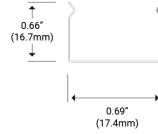




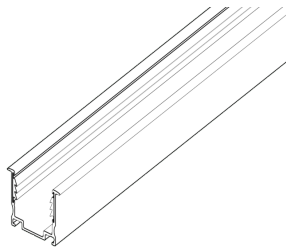
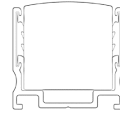
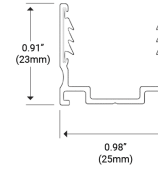
Mounting



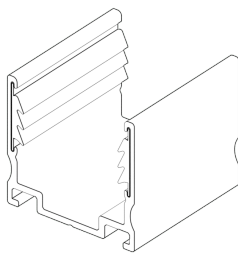
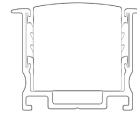
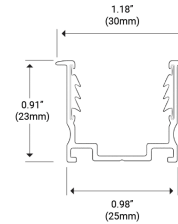
Type ENN-CH-SS-FLX-1M
Length 39.37in (1,000mm)
Width 0.69in (17.4mm)
Height 0.66in (16.7mm)



Type ENN-CH-AL-SR-2M
Length 78.74in (2,000mm)
Width 0.98in (25mm)
Height 0.91in (23mm)



Type ENN-CH-AL-SR-RC-2M
Length 78.74in (2,000mm)
Width 1.18in (30mm)
Height 0.91in (23mm)



Type ENN-CLP-AL-SR
Length 1.38in (35mm)
Width 0.87in (22.05mm)
Height 0.81in (20.5mm)

