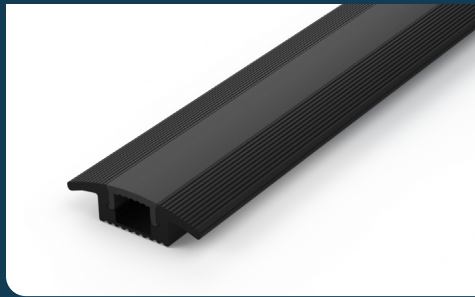


FIXTURE TYPE _____

PROJECT NAME _____

LOCATION _____



CH-723

EXTRUDED ALUMINUM MOUNTING CHANNEL



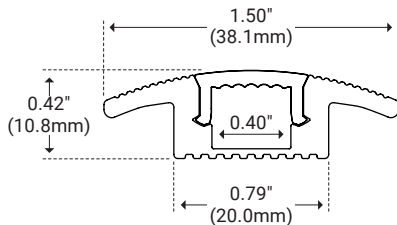
I Features

- Available in 2 Meter Sections
- Extruded Aluminum Construction
- Anodized Matte Finish
- Consult Factory for Custom Lengths & Finishes

I Specifications

Series	CH-723
Length	78.74" (2M)
Width	1.50" (38.1mm)
Width (Internal)	0.40" (10.2mm)
Height	0.42" (10.8mm)

I Dimensions



I Options

Description	Unit Number
Clear Lens	CL
Frosted Lens	FR
White Lens	WH
Black Lens	BK
Surface Mount	SF
End Caps	EC

I Application Image



I Product Code Builder

Series	Length	Lens	Mounting	End Cap
CH-723	2		SF	EC
CH-723 – CH-723	2 – 2 Meters	CL – Clear FR – Frosted WH – White BK – Black	SF – Surface Mount	EC – End Caps (included)

Example: CH-723-2-CL-SF-EC