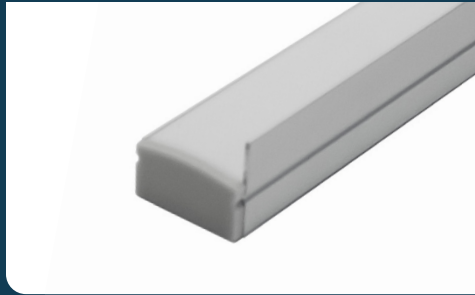


FIXTURE TYPE \_\_\_\_\_

PROJECT NAME \_\_\_\_\_

LOCATION \_\_\_\_\_



# CH-506-A

EXTRUDED ALUMINUM MOUNTING CHANNEL



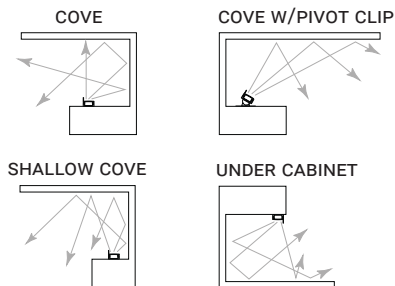
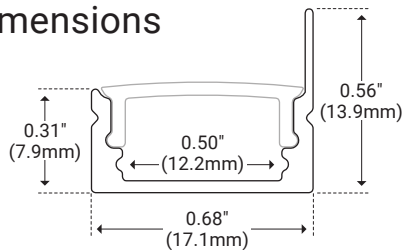
## I Features

- Available in 2 Meter Sections
- Extruded Aluminum Construction
- Anodized Matte Finish
- Consult Factory for Custom Lengths & Finishes








## I Specifications

Series	CH-506-A
Length	78.74" (2M)
Width	0.68" (17.1mm)
Height	0.31" (7.9mm)   0.56" (13.9mm)
Internal Width	0.50" (12.2mm)

## I Dimensions



## I Options

Description	Unit Number	Light Transmission
 Clear Lens	CL	98%
 Frosted Lens	FR	84%
 White Lens	WH	64%
 Mounting Clips	CP	--
 Pivot Mounting Clips	PV	--
 End Cap With Hole	EC	--
 End Cap Without Hole	EC	--

## I Product Code Builder

Series	Length	Lens	Mounting	End Cap
<b>CH506A</b> CH506A – CH-506-A	<b>2</b> 2 – 2 Meters	<b>CL</b> – Clear <b>FR</b> – Frosted <b>WH</b> – White	<b>CP</b> – Mounting Clip <b>PV</b> – Pivot Mounting Clip	<b>EC</b> EC – End Caps (included)

Example: CH506A-2-CL-CP-EC