

FIXTURE TYPE _____

PROJECT NAME _____

LOCATION _____



CH-0009

TRIMLESS & MUD-IN CHANNEL

Create perfectly flush, seamless lines of light without modifying the structure behind the sheet rock.

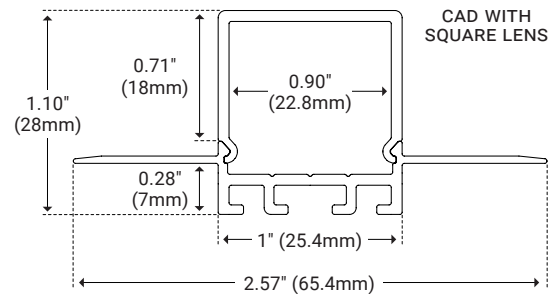
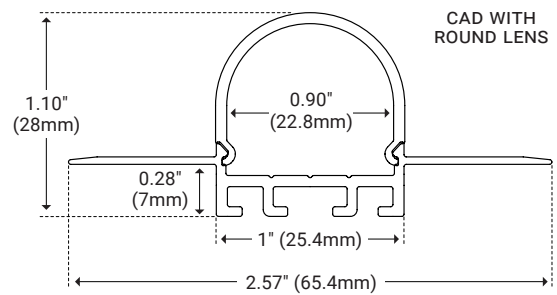


I Features

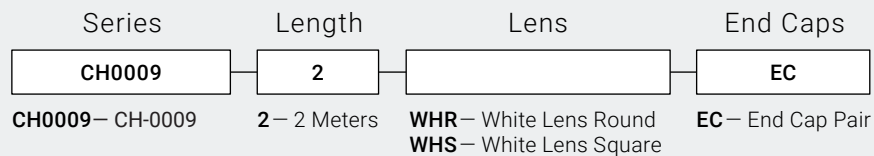
- Available In 78.74" (2m) Sections
- Extruded Aluminum Construction
- Anodized Matte Finish
- Straight and Angled Connectors Available to Create Long, Continuous Runs
- Drywall Mud-in Mounting for a Seamless Recessed Look
- Consult Factory for Custom Lengths and Finishes
- Available In Various Finish Colors
- For Indoor Use Only

I Dimensions

Length	78.74" (2m)
Width (External)	2.57" (65.4mm)
Width (Internal)	0.90" (22.8mm)
Height	1.10" (28mm)



I Ordering Code Builder



Example: CH0009-2-WH-EC



I Lens



White Lens Round

Unit Number	CH-LNS-AE-WHR-2M	Ordering Code WHR
Dimension	L 78.74" (2m) W 1" (25.7mm)	H 0.83" (21.2mm)
Light transmission	70%	



Disposable Cover Round

Unit Number	CH-LNS-AE-DISPR-2M	INCLUDED
Dimension	L 78.74" (2m) W 1" (25.7mm)	H 0.83" (21.2mm)
Description	Used to protect interior LED area during installation.	



White Lens Square

Unit Number	CH-LNS-AE-WHS-2M	Ordering Code WHS
Dimension	L 78.74" (2m) W 1" (25.7mm)	H 0.83" (21.2mm)
Light transmission	70%	



Disposable Cover Square

Unit Number	CH-LNS-AE-DISPS-2M	INCLUDED
Dimension	L 78.74" (2m) W 1" (25.7mm)	H 0.83" (21.2mm)
Description	Used to protect interior LED area during installation.	

I End Cap



Round End Cap Pair

Unit Number	CH-ECR-0009	Ordering Code EC
Dimension	L 0.26" (6.8mm) W 1" (25.7mm)	H 1.1" (28mm)
Note	Included with Round Lens	



Square End Cap Pair

Unit Number	CH-ECS-0009	Ordering Code EC
Dimension	L 0.26" (6.8mm) W 1" (25.7mm)	H 1.1" (28mm)
Note	Included with Square Lens	

I Optional Accessories

Product	Unit Number	Description
Straight Connector	CH-CON-01-180	Secure two pieces of channel together to form a continuous run of light.
90° Connector Horizontal	CH-CON-01-90H	Secure two pieces of channel together to form a 90° horizontal corner.
90° Connector Vertical	CH-CON-01-90V	Secure two pieces of channel together to form a 90° vertical corner.
120° Connector Horizontal	CH-CON-01-120H	Secure two pieces of channel together to form a 120° horizontal corner.
135° Connector Horizontal	CH-CON-01-135H	Secure two pieces of channel together to form a 135° horizontal corner.
135° Connector Vertical	CH-CON-01-135V	Secure two pieces of channel together to form a 135° vertical corner.