

# Creighton Hall

**Location:**

Omaha, Nebraska

**Architect:**

Holland Basham Architects

**Engineer:**

Morrissey Engineering  
Steve Gollehon

**Specifying Agent:**

Lighting Specialists

**Photographer:**

Tom Kessler

A photograph of Creighton Hall, a tall, ornate building with Art Deco architectural details, illuminated at dusk. The building features intricate carvings and a series of windows that are lit from within, creating a warm glow against the dark blue sky. The foreground shows some bare tree branches and street lamps.

# Shining Light on a Work of Architectural History

Built in 1877, Creighton Hall has a long history of prominence at Creighton University in Omaha, Nebraska. As the oldest building on campus, Creighton Hall originally served as the academic home for the first students at the then-known Creighton College. Creighton Hall was built in the 1800's through the beneficence of the pioneering Creighton Family and has served as the Administrative Building and as the home of the College of Arts and Sciences for many years.

The lighting design team from Morrissey Engineering was tasked with giving form to the iconic building architecture with the first extensive updates to the historical building in nine decades. The project is comprised of illuminating the historic exterior which consists of a 190-foot seamless façade of Bedford stone that features unique Creighton, Catholic, and Nebraska emblems.

*"In giving form to the architecture of Creighton Hall, the lighting of this important building enables us to acknowledge the past, to recollect the legacy of the institution, and to carry Creighton University's storied history of academic success forward,"* said Steve Gollehon, Morrissey Engineering. *"In the triadic Jesuit*

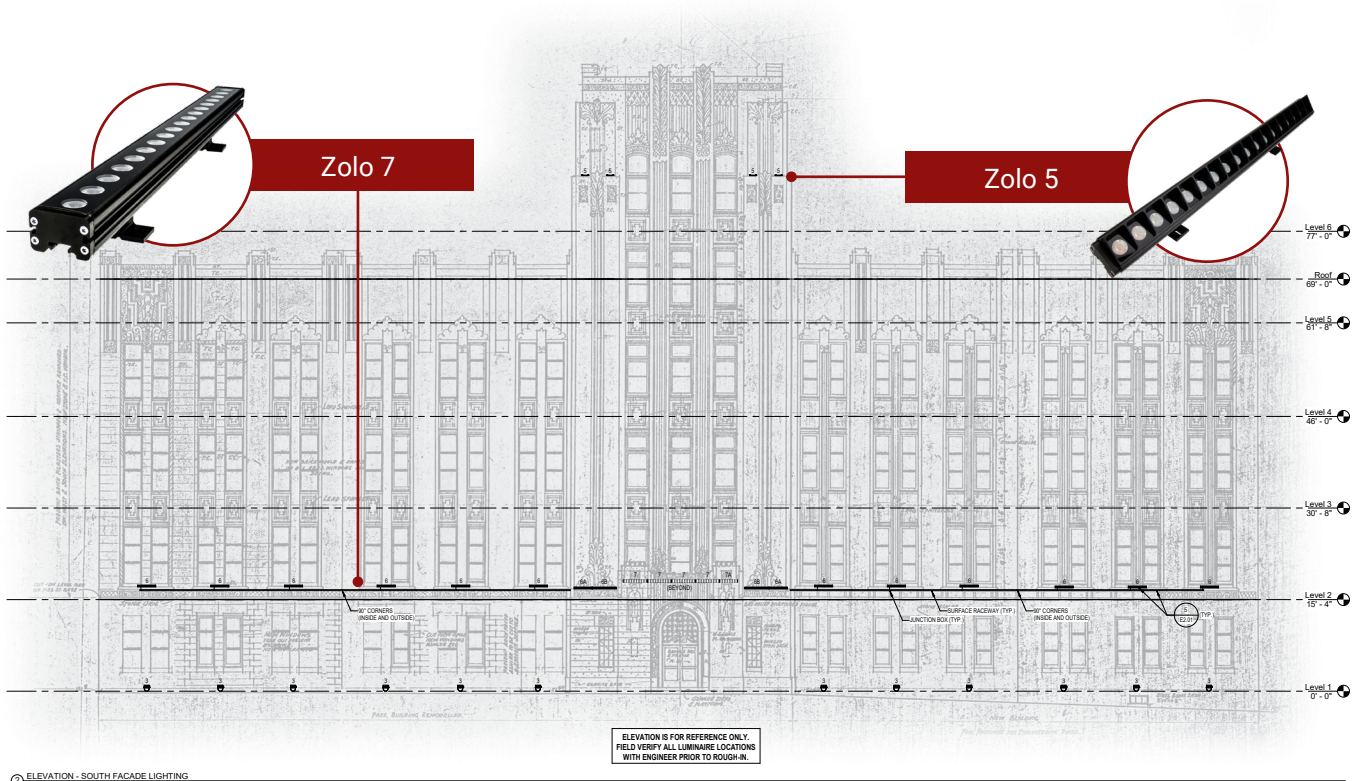
*value of Unifying the Heart, Mind, & Soul, the lighting design approach for Creighton Hall similarly sought to unify the beauty of the whole façade by acknowledging each part of its form,"*

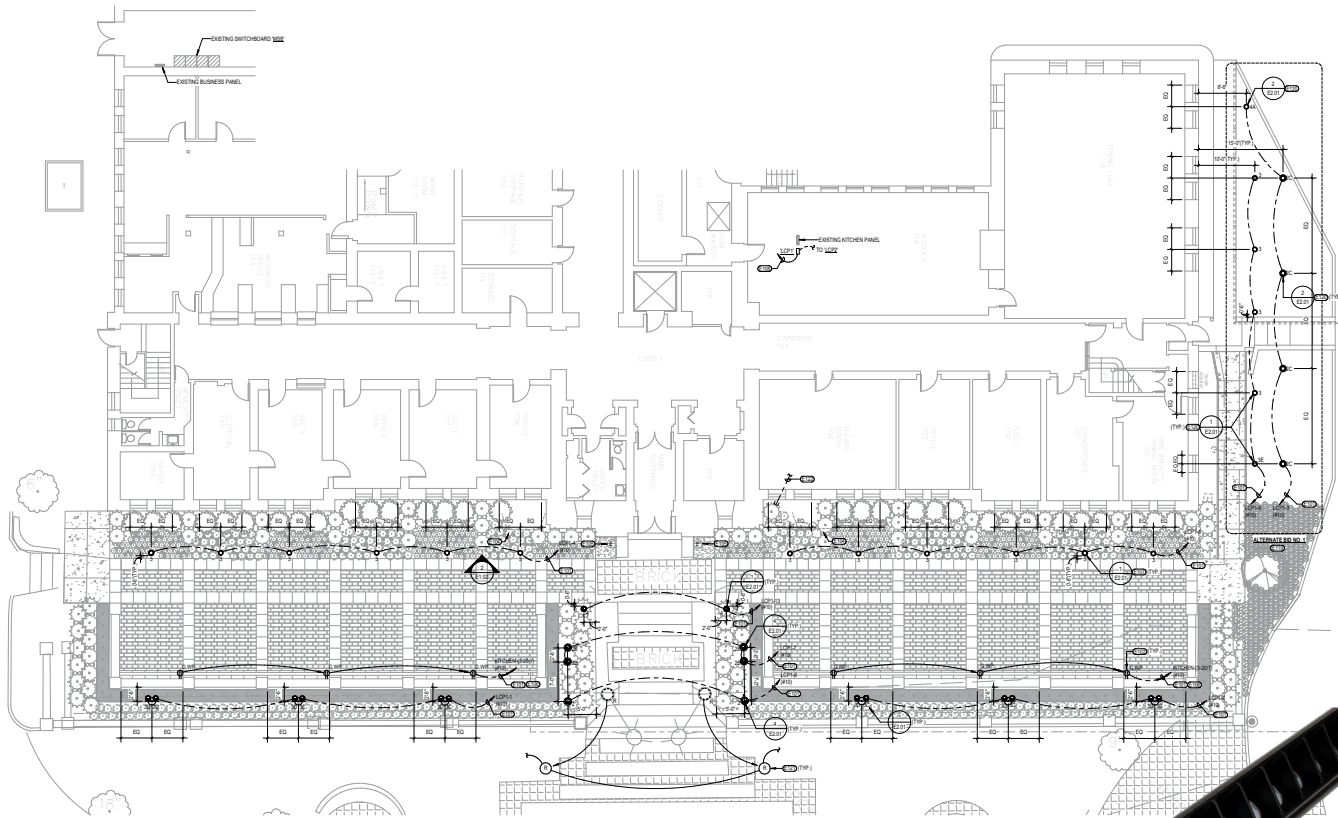
The lighting designers created a multi-layer lighting effect to both unify the building's design and emphasize its unique façade. The project utilized a combination of ninety-three energy efficient LED lights including a variety of linear luminaires manufactured by Kelvix. The **Zolo™** luminaires were specifically selected by the design team to provide the primary illumination due to their small size, high performance optics, and Kelvix's ability to modify products for the unique project requirements.

*"Zolo luminaires were selected due to their small size, high performance optics, and Kelvix's ability to modify products for the unique project requirements."*



# A Project of Unification





The primary lighting layer objective is to provide a general wash from ground-mounted flood lights to illuminate the elevation and reveal the base elements and general form of the building, according to Gollehon. The secondary lighting layer consists of wall grazing linear spotlights that advance upward in broad gestures at the base of the central tower and at the minor pilasters of the wings, revealing the columnated forms of the building.

The **Zolo Slim** Indoor / Outdoor LED Washer / Grazer provides the ideal solution to help achieve this layered lighting affect. The powerful **Zolo 7** delivers a linear line of light that projects uplight to the columns and wings of the building. Multiple 30W linear LED grazers (of fixtures) in 3000K are mounted with a custom 3" standoff that is centered on the pilasters between the windows. To accent the iconic central tower, the compact 2' version, the **Zolo 5**, is the ideal choice.



**Zolo 5™**

*"The **Zolo** provided a lot of flexibility with Class 2 wiring and remote drivers. Also, the small profile disappears on the façade during the daytime,"* said Gollehon.

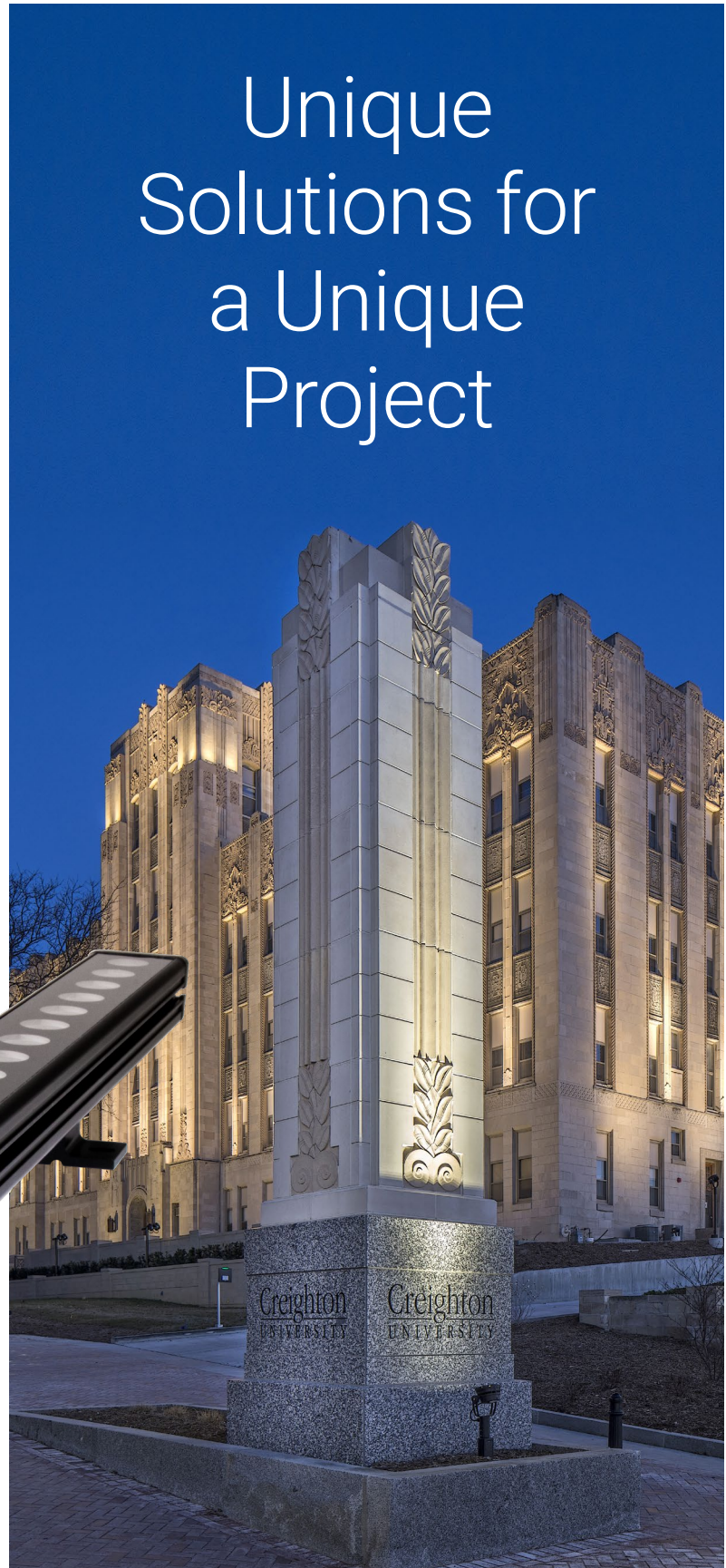
*"In a crowning gesture, the tertiary lighting layer is composed of cove and ground-mounted spotlight luminaires, highlighting the decorative frieze that bedecks the height of the main tower and the peripheral wings, revealing the capital forms of the building,"* remarked Gollehon. *"The lighting design accomplishes a sense of aesthetic unity by emphasizing the building's tripartite organization of base, column, and capital elements."*

While the seamless façade of Bedford stone is beautiful, it does present a challenge with lighting when it comes to routing conduit and wiring and concealing the lighting from view. This is where Kelvix's ability to modify products for the unique project requirements comes to the forefront.

*"I would say the biggest challenges of this project was routing conduit, wiring to the lighting locations, and identifying how to best conceal the lighting from view. There aren't any ledges that could easily conceal conduit or luminaires from view,"* noted Gollehon.

Custom mounting arms were designed by Kelvix engineers based around the existing constraints of the building and a custom finish was created to camouflage the luminaires. Additionally utilizing low voltage luminaires allows for greater flexibility to conceal routing of wiring to luminaires, which minimizes disruption to the historic façade.

### Zolo 7™



Overall a total of 112 feet of Kelvix linear LED luminaires were used to light Creighton Hall. The historic illumination project is controlled by an automated system that provides illumination according to the time of the day, enhancing the building's beauty and improving safety around the landmark structure.

With this recent renovation, the iconic building is now easily seen from the Interstate 480, bringing visibility to the historic building for years to come.



# Products Used

Zolo™ 5



Zolo™ 7 with 3" Standoffs



HLV96



The **Zolo Series** is a powerful low voltage solution available in multiple optics and lengths with Class 2 wiring and remote drivers. To minimize the visual presence of the luminaires during the day, each fixture is supplied in a custom finish to match the existing façade and all raceways are powder coated in the same finish.

**KELVIX®** is an affordable linear LED manufacturer with a reputation for great service and fast lead times. Our staff of highly-trained project managers guide customers through each project from start to finish. Kelvix is a team of problem solvers and doers. We always have our clients best interest at heart.