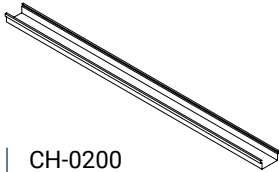


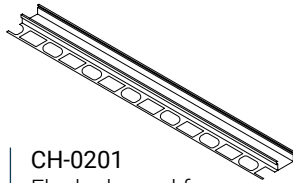


Floor Wall Ceiling

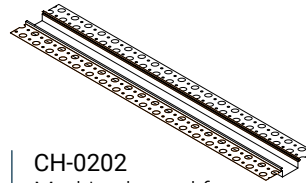
Application Guide



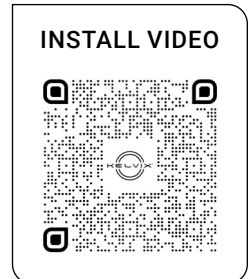
CH-0200
Surface channel
for use with any
surface application.



CH-0201
Flush channel for
use with tile, stone,
and wood.



CH-0202
Mud-In channel for
use with drywall.



I Description

Due to the consistent lens thickness and lens width, use these channels to create a unified line of light between different surfaces.

I Compatibility

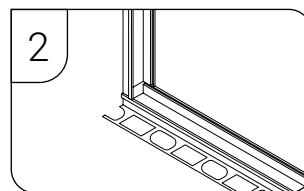
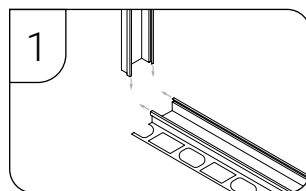
- Lens: CH-LNS-AH-WH-2M
- Consult Factory for Compatible Light Source

I Series Features

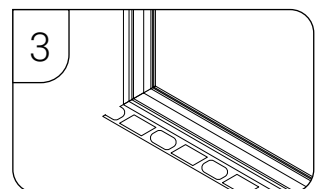
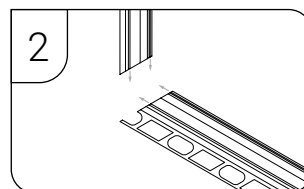
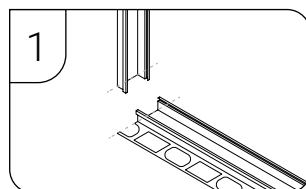
- Walkover Rated
- Longer Lasting Installation When Paired with Wet Rated Tape
- Works on Floors, Walls, and Ceilings
- Channel Components Are Compatible and Interchangeable Across Different Surfaces

I Connection Methods

Overlap Connection
Overlap the channels stacking one end over the other.



Mitered Connection
Cut the two connecting channels at a 45° angle.



Recommendation
Cut lens after installing the channels. Lenses will likely be shorter in length to the channel.

