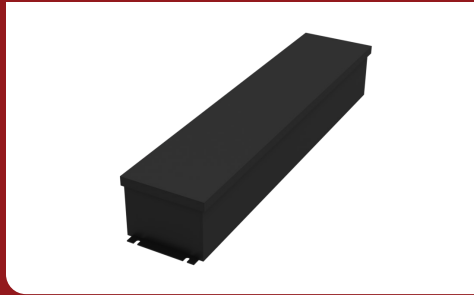


FIXTURE TYPE _____

PROJECT NAME _____

LOCATION _____



SLV96

96 WATT-24 VOLT | NON DIM |
CLASS 2 POWER SUPPLY



Description

The SLV96 is a robust 96 Watt non-dimming LED power supply designed for digital pixel (SPI) controlled lighting. Its high efficiency design maximizes power usage, making it an ideal choice for applications where precision and energy conservation are essential. The SLV96 seamlessly integrates with Kelvix digital pixel-controlled products, offering the capability to power a diverse array of creative installations and shows.

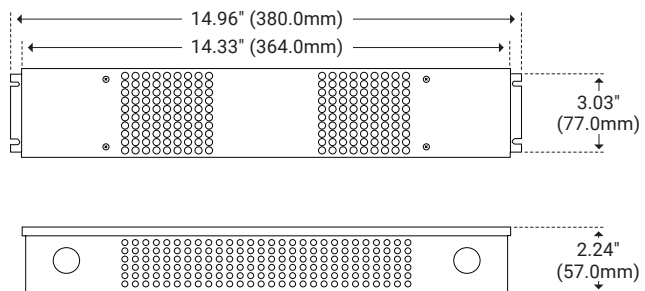
Specifications

Series	SLV96
Input Voltage	100-277V AC
Output Voltage	24V DC / Constant Voltage
Max Wattage	96W
Temp Range	-35°F(-37°C) – 158°F (70°C)
Dimensions	14.96" × 3.03" × 2.24"
Classification	Class 2

Features

- Non-Dimmable Driver
- Compatible with Color Changing and Pixel Systems
- Overload Protection/Auto Reset Short Circuit Protection
- Free Air Convection Cooling
- Suitable for Dry/Damp Location
- UL-Listed Class 2

Dimensions



Series List

Model Name	Rated Input Voltage	Rated Output Power	Rated Output Voltage	Output Current	Note
SLV96	100-277V AC	96W	24V	0-4000mA	Non-Dimming



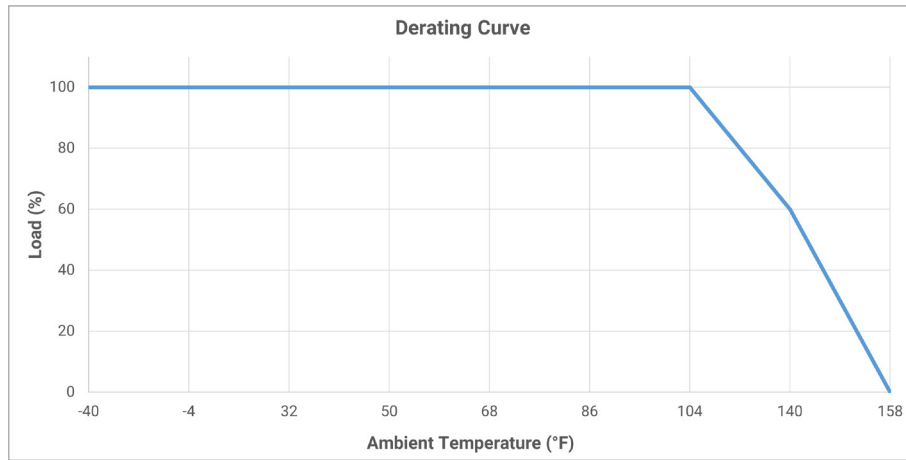
I Series Data

Model		SLV96	
Certificates		UL cUL FCC Class 2	
Output	DC Voltage	24V	
	Rated Current	4A	
	Rated Power	96W	
	Voltage Tolerance	±0.5V	
	Voltage Regulation	±0.5%	
	Load Regulation	±1%	
Input	Voltage Range	100-277VAC	
	Frequency Range	47-63Hz	
	Power Factor (Typ.) @ full load	0.99 @ 120VAC	
	THD (Typ.) @ full load	<15% @ 120VAC	
	Efficiency (Typ.) @ full load	83% @ 120VAC	
	AC Current (Max.)	1.5A	
	Inrush Current (Typ)	20A, 50%, 1.6ms @ 120VAC	
	Leakage Current	<0.50mA	
Protection	Short Circuit	Shut down o/p voltage, re-power on to recover after fault condition is removed	
	Over Loading	≤120% constant current limiting, auto-recovery	
	Over Temperature	212°F±18°F shut down o/p voltage, automatically recover after cooling	
Environment	Working Temperature	-40°~+140°F	
	Working Humidity	20~90% RH, non-condensing	
	Storage Temperature Humidity	-40~+176°F, 10~95% RH	
	Temperature Coefficient	±0.054%/°F (0~122°F)	
	Vibration	10~500Hz, 5G 10min/1 cycle, period for 60min each along X, Y, Z axes	
Safety & EMC	Safety Standards	UL8750 + UL1310	
	Withstand Voltage	I/P-O/P: 1.88KVAC	
	Isolation Resistance	I/P-O/P: 100MΩ / 500VDC / 77°F / 70% RH	
	EMC Emission	FCC Part 15B	
Others	Net Weight	2.31lbs (1.05Kg)	With junction box: 3.84lbs (1.74Kg)
	Size	9.06" × 2.76" × 1.69" (230mm × 70mm × 43mm)	
Notes	<p>1. All parameters if NOT specially mentioned are measured at 120VAC input, rated load and 77°F of ambient temperature.</p> <p>2. To extend the driver's using life, please reduce the loading at lower input voltage.</p>		



I Charts

Derating Curve



I Wiring Diagram

Secondary Side Dimming (DMX)

