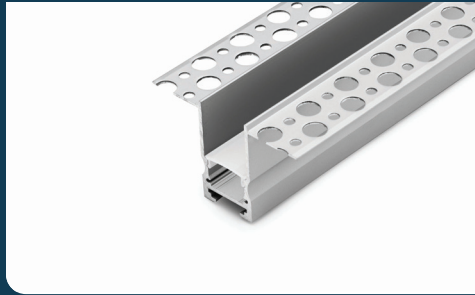


FIXTURE TYPE _____

PROJECT NAME _____

LOCATION _____



CH-0006

TRIMLESS & MUD-IN CHANNEL

Create perfectly flush, seamless lines of light without modifying the structure behind the sheet rock.

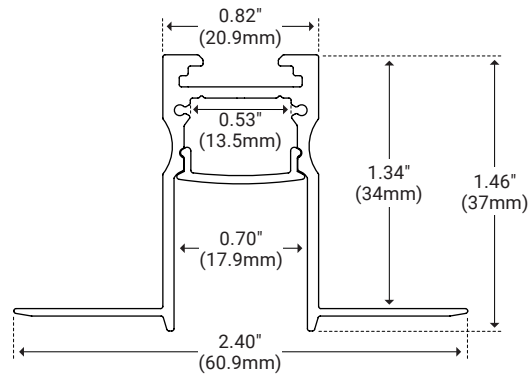


I Features

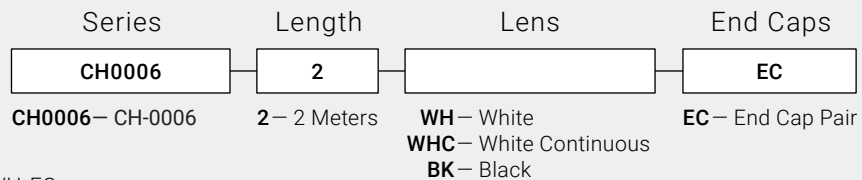
- Available In 78.74" (2m) Sections
- Extruded Aluminum Construction
- Anodized Matte Finish
- Straight and Angled Connectors Available to Create Long, Continuous Runs
- Drywall Mud-in Mounting for a Seamless Recessed Look
- Consult Factory for Custom Lengths and Finishes
- Available In Various Finish Colors

I Dimensions

Length	78.74" (2m)
Width (External)	2.40" (60.9mm)
Width (Internal)	0.53" (13.5mm)
Height	1.46" (37mm)



I Ordering Code Builder



Example: CH0006-2-WH-EC



I Lens



White Lens

Unit Number	CH-LNS-AF-WH-2M	Ordering Code WH
Dimension	L 78.74" (2m) W 0.66" (16.8mm)	H 0.20" (5.2mm)
Light transmission	71%	



White Lens Continuous

Unit Number	CH-LNS-AF-WH-CO	Ordering Code WHC
Dimension	L Varies W 0.66" (16.8mm)	H 0.20" (5.2mm)
Light Transmission	71%	



Black Lens

Unit Number	CH-LNS-AF-BK-2M	Ordering Code BK
Dimension	L 78.74" (2m) W 0.66" (16.8mm)	H 0.20" (5.2mm)
Light transmission	20%	



Disposable Cover

Unit Number	CH-LNS-AF-DISP-2M	INCLUDED
Dimension	L 78.74" (2m) W 0.66" (16.8mm)	H 0.20" (5.2mm)
Description	Used to protect interior LED area during installation.	

I End Cap



End Cap Pair

Unit Number	CH-EC-0006	Ordering Code EC
Dimension	L 0.08" (2mm) W 0.82" (20.9mm)	H 1.46" (37mm)

I Optional Accessories

Product	Unit Number	Description
Straight Connector	CH-CON-02-180	Secure two pieces of channel together to form a continuous run of light.
90° Connector Horizontal	CH-CON-03-90H	Secure two pieces of channel together to form a 90° horizontal corner.
90° Connector Vertical	CH-CON-02-90V	Secure two pieces of channel together to form a 90° vertical corner.
120° Connector Horizontal	CH-CON-02-120H	Secure two pieces of channel together to form a 120° horizontal corner.