

FIXTURE TYPE _____

PROJECT NAME _____

LOCATION _____



CH-0001

TRIMLESS & MUD-IN CHANNEL

Create perfectly flush, seamless lines of light without modifying the structure behind the sheet rock.

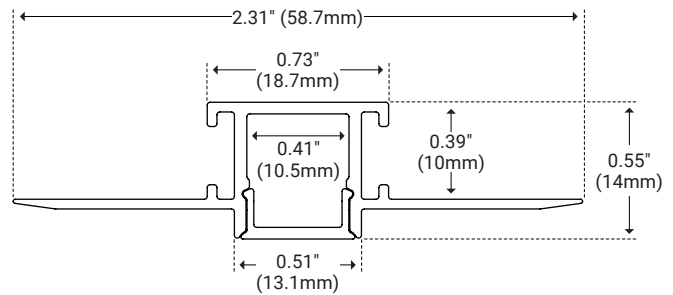


I Features

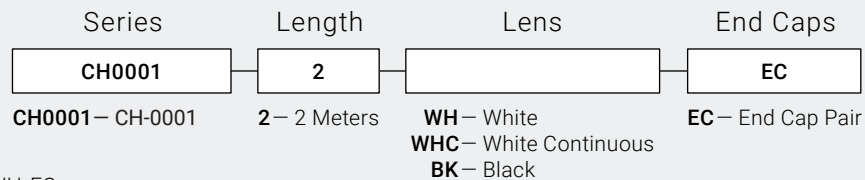
- Available In 78.74" (2m) Sections
- Extruded Aluminum Construction
- Anodized Matte Finish
- Straight and Angled Connectors Available to Create Long, Continuous Runs
- Drywall Mud-in Mounting for a Seamless Recessed Look
- Consult Factory for Custom Lengths and Finishes
- Available In Various Finish Colors

I Dimensions

Length	78.74" (2m)
Width (External)	2.31" (58.7mm)
Width (Internal)	0.41" (10.5mm)
Height	0.55" (14mm)



I Ordering Code Builder



Example: CH0001-2-WH-EC



I Lens



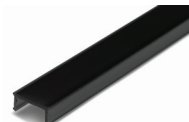
White Lens

Unit Number	CH-LNS-AB-WH-2M	Ordering Code WH
Dimension	L 78.74" (2m) W 0.45" (11.6mm)	H 0.20" (5.28mm)
Light transmission	53%	



White Lens Continuous

Unit Number	CH-LNS-AB-WH-CO	Ordering Code WHC
Dimension	L Varies W 0.45" (11.6mm)	H 0.20" (5.28mm)
Light Transmission	53%	



Black Lens

Unit Number	CH-LNS-AB-BK-2M	Ordering Code BK
Dimension	L 78.74" (2m) W 0.45" (11.6mm)	H 0.20" (5.28mm)
Light transmission	10%	



Disposable Cover

Unit Number	CH-LNS-AB-DISP-2M	INCLUDED
Dimension	L 78.74" (2m) W 0.45" (11.6mm)	H 0.20" (5.28mm)
Description	Used to protect interior LED area during installation.	

I End Cap



End Cap Pair

Unit Number	CH-EC-0001	Ordering Code EC
Dimension	L 0.26" (6.8mm) W 0.51" (13mm)	H 0.55" (14mm)

I Optional Accessories

Product	Unit Number	Description
Straight Connector	CH-CON-02-180	Secure two pieces of channel together to form a continuous run of light.
90° Connector Horizontal	CH-CON-02-90H	Secure two pieces of channel together to form a 90° horizontal corner.
90° Connector Vertical	CH-CON-02-90V	Secure two pieces of channel together to form a 90° vertical corner.
120° Connector Horizontal	CH-CON-02-120H	Secure two pieces of channel together to form a 120° horizontal corner.

To ensure stability, we recommend utilizing two connectors per channel junction for use in both of the exterior connector slots.

